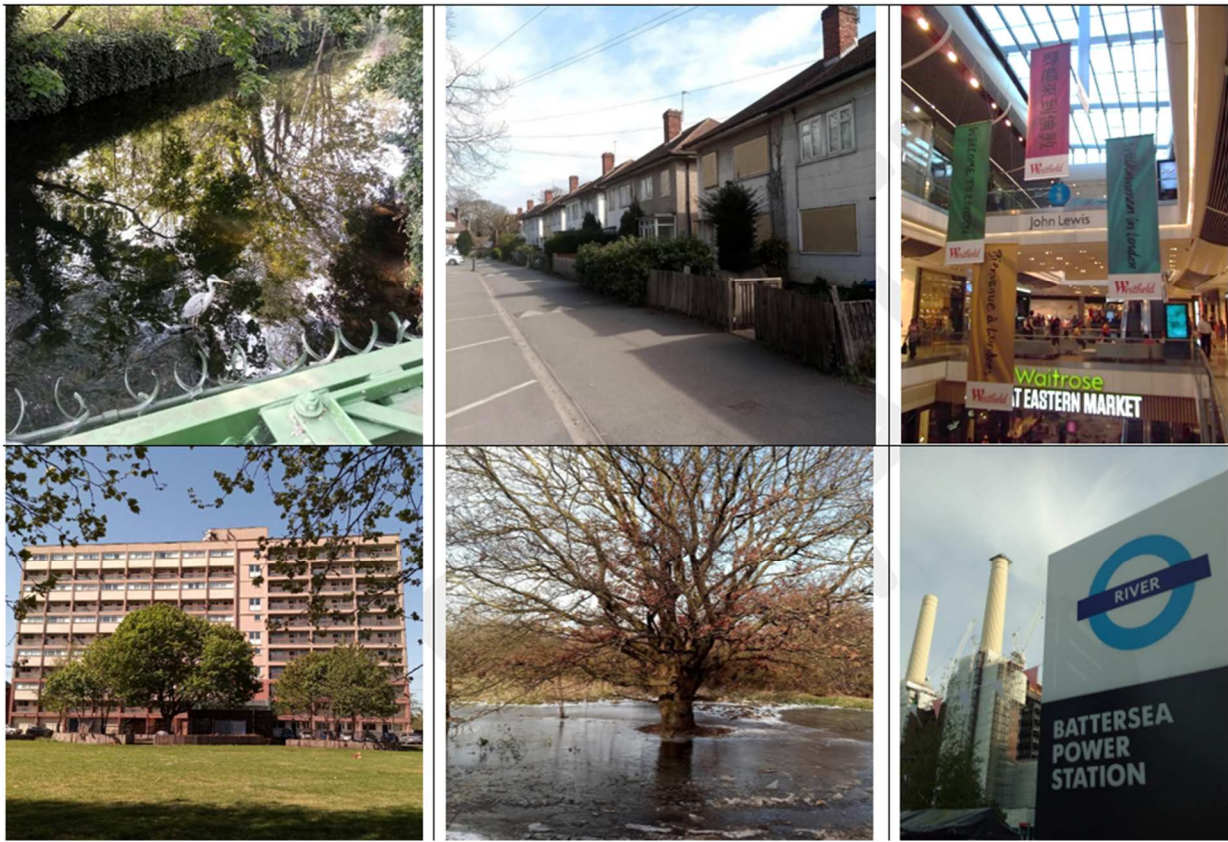


Important things to know

- 1. Our **settlement** is our **home**: where we live; where people work and play.
- 2. Local landscapes might be grey, green or blue.
- 3. Grey places include playgrounds, car parks, streets and pavements.
- 4. Green or blue places describe trees, gardens, rivers, streams, ponds and the sea.
- 5. You might even have a coast, hill or a mountain **near** you!
- 6. **Landmarks** are important locations where people celebrate, gather or commemorate events. Our **school** is also a landmark!
- 7. Homes can be flats; detached or semi-detached houses; or bungalows.
- 8. Nearby, there might be places to buy things or get things fixed.
- 9. What shops, High Streets, retail parks, superstores or garages do you have? How **far** away are they?
- 10. Ways of travelling include buses, trains, trams and cars. People may also walk on a pavement, footpath or bridleway, or they may cycle.

5 words to remember

home
landmark
near and far
school
settlement



Green locations include rivers and parks	Grey locations include streets	Shops and supermarkets are where we buy things
Homes are where we live	Parks and gardens are where we relax and walk our dogs	Landmarks sometimes change how they are used; travel is how we get around