



Class 4 - Summer 2

Key Information



Welcome to our Learning Overview for Class 4.

In our class, we have Miss Corbishley as the class teacher and Mrs Whittaker as our Teaching Assistant.



Our PE days are Monday and Wednesday.

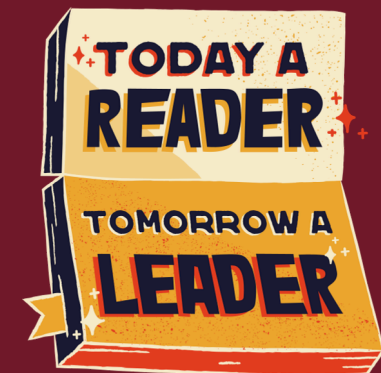
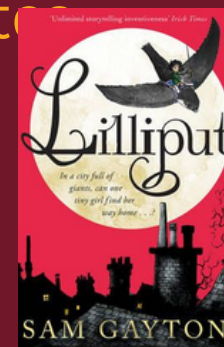
Important dates for this half term:

Monday 22nd June-KS2 Sports Day 1.30pm

Monday 29th June (Reserve date for KS2 Sports Day 1.30pm)

See Newsletter for other dates

During the end-of-day storytime, we will continue reading Lilliput.





Class 4's Learning Overview

Summer 2



Writing

This half-term, we will focus our learning on the book 'Weslandia' by Paul Fleischman. We are focusing on many aspects of writing and completing many short writing opportunities, including predictions, character descriptions and eventually a retelling the story in their own words. Our final piece of writing will be a non-chronological report published as a brochure for Weslandia itself.

Grammar specific learning: fronted adverbials, headings and subheadings, conjunctions, adverbs, noun phrases, similes, paragraphs to organise ideas and use of inverted commas.

Reading

In our reading lessons, we will continue reading the story 'Lilliput'. In each session, we focus on learning new vocabulary, tricky words and focus words. Daily reading at home will support your child's progress in fluency. Home reading books will be changed every Thursday.





Class 4's Learning Overview

Summer 2

Maths

In Maths, we have started the half-term with work focusing on multiplication and division. We will also be learning about the 4 operations and fractions. The children will learn to count and find equivalent fractions and work out percentages.

Children will also complete learning about time graphs, line graphs and bar charts.

REMINDER: Our Year 4 children will take their Multiplication Tables Check. Year 4 children are expected to know their multiplication tables up to 12x12. Children will have 25 questions and 6 seconds to answer each.

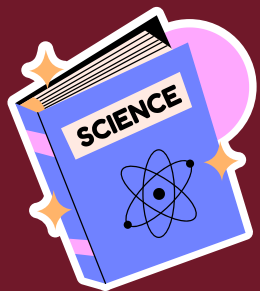




R.E.

Unit Title: Why Are Holy Buildings and Places Important to People of Faith?
In R.E., the children will be looking at different Holy Buildings and why they serve as sacred spaces that encourage and foster community. This unit seeks to support children's understanding of different religions as well as Holy buildings and places.

Science



This term, children will continue to develop their understanding of electricity by learning about everyday appliances that use electrical power and by building simple series circuits using components such as cells, wires, bulbs, buzzers and switches. They will also start our new unit 'Changing Humans'. This unit builds on prior learning and involves planning scientific inquiries, measuring accurately, recording complex data, and presenting findings. It emphasizes identifying evidence to support or refute ideas, drawing conclusions, and explaining results. Students will learn to describe changes in humans as they develop as babies, through childhood, adolescence, adulthood, and into old age. They will also plan relevant questions to ask humans about changes as they grow, take accurate measurements, and use data to create line graphs that show how human height varies with age. The unit also covers the impact of a growing population on our planet and makes predictions for the future.

Geography

This geography unit enables Year 4 and Year 5 pupils to investigate how the local area of Accrington has changed over time and how geography helps us understand the relationship between people, places and the environment. Through fieldwork, mapwork and local enquiry, pupils will act as geographers by observing, questioning, recording and analysing features within their community. The unit is rooted in real-world geography and encourages children to develop a strong sense of place by exploring how local landscapes reveal “clues from the past.” Pupils will investigate how industry, transport, housing, land use and physical features have shaped Accrington and continue to influence the town today. They will compare historical and modern maps, observe human and physical features during fieldwork, and consider how places evolve over time.





P.E.

We will be completing athletics and tennis.



P.S.H.E.

During P.S.H.E., the children will be focusing their learning on health and wellbeing.

DT

Unit Title: Bridges

This half term, the children will explore different bridges, and how structural strength is affected by shape and design.

