



Class 3 - Summer 2

Key Information



Welcome to our Learning Overview for Class 3.

In our class we have Mrs Barker as the class teacher and Miss Clarkson as our Teaching Assistant.



Our PE days are Monday and Thursday (swimming).

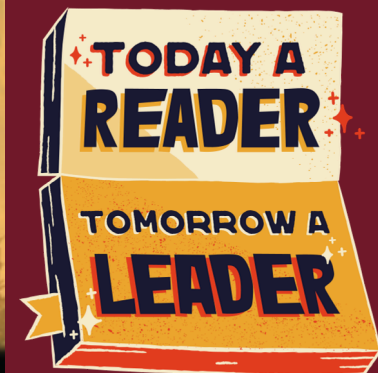
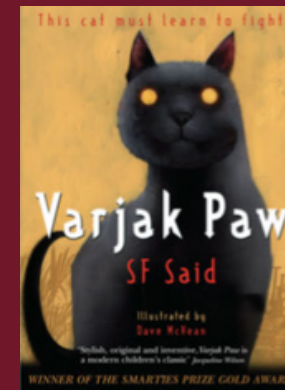
Important dates for this half term:

Monday 22nd June 1.30pm - KS2 Sports Day

Monday 29th June 1.30pm - reserve date for KS2 Sports Day

Friday 3rd July - School sponsored event (more details to follow)

During the end-of-day
storytime, we are reading
Varjak Paw





Class 3's Learning Overview Summer 2

Writing

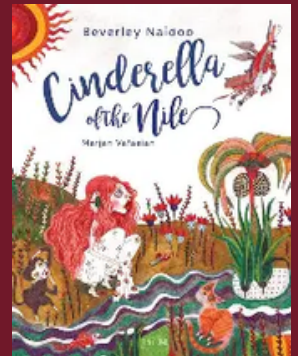
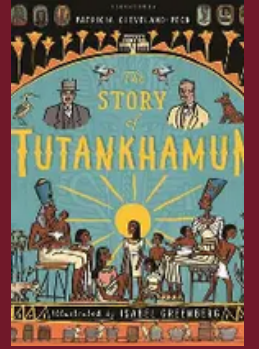
In writing this half-term, we will finish our work on the story of Tutankhamun by writing our biographies on Howard Carter.

Following this, we will move on to read the story Cinderella on the Nile. From this book the children will use their inference skills to explore the author's use of literary language and the effect this has on the reader. The children will also relate their knowledge of the traditional tale of Cinderella and devise their own version of a Cinderella tale with a fable.

Reading

In each session of our reading sessions we focus on learning new vocabulary, tricky words and focus words. Daily reading at home will support your child's progression with their fluency.

Home reading books can be changed every Thursday.





Class 3's Learning Overview Summer 2

Maths

In Maths we have started the half term completing our work on shape and angles. The children will revise and build on their previous knowledge of 2D and 3D shapes.

Following this, we will move on to complete work on statistics. The children will explore information presented in charts, pictograms and tables. We will also spend some time practising written methods for the four operations.



Esther and Aisha are looking for different kinds of flowers in the park.

Flower	Number found
rose	⊗⊗
buttercup	⊗⊗⊗⊗
daisy	⊗⊗⊗

Key
⊗ = 4 flowers

Write **acute**, **obtuse** or **right angle** to label each angle.

Order the angles from smallest to greatest.

Use the words to describe the properties of the shapes.

polygon 4 sides 1 pair of parallel sides
 4 right angles 4 equal sides 2 pairs of parallel sides

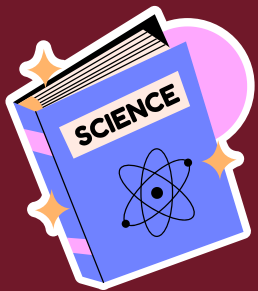


R.E.

Why Are Holy Buildings and Places Important to People of Faith?

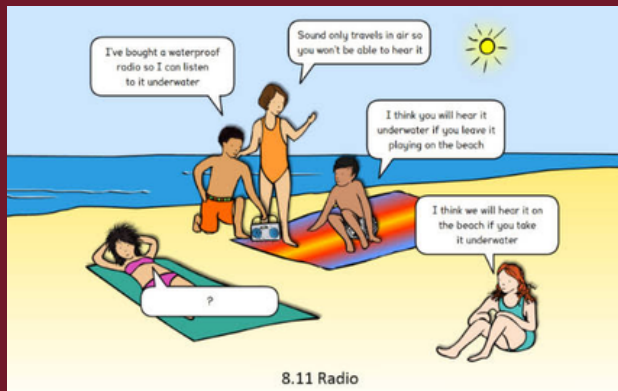
The work completed during this unit will give children an understanding of the Christian church in its widest sense and ensure pupils know that Christianity is a multi-cultural worldwide faith.

We will look at the similarities and differences between Christian denominations and develop children's knowledge and understanding of sacred places of worship across world faiths.



Science

In Science the children will be learning about Sounds around us. They will explore how sounds are made, travel and are heard. Through hands-on investigations and real-life contexts, children explore the science of sound and vibration while developing important scientific enquiry skills.



Geography

In Geography we will be learning about the physical features of the Nile, its importance to the people of Egypt and the effect it has on the environment. physical environments and human activity. Our work will allow us to investigate the importance of rivers, deserts, climate, settlement and trade through the study of Egypt and the River Nile. We will then compare Egypt with the United Kingdom, use maps and atlases, interpret aerial images, describe geographical patterns and develop fieldwork and enquiry skills.






P.E.

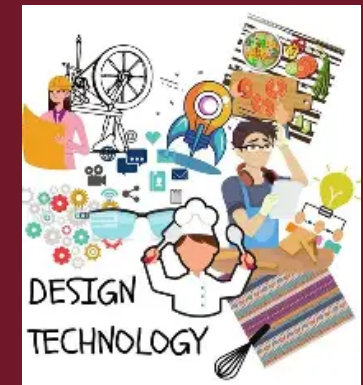
In our Monday PE lessons we will be practising our athletic skills. This will focus on different style of running, jumping and throwing.

On Thursdays the children will be swimming.

Ladder Knowledge	Running:	Jumping:	Throwing:
	Leaning slightly forwards helps to increase speed. Leaning your body in the opposite direction to travel helps to slow down.	If you jump and land quickly it will help you to jump further.	The speed of the movement helps to create power. So, moving from slow to fast will help you to throw further.

DT

This half term the children will explore how castles were built for defence and residence. They will learn key vocabulary such as façade, battlement, turret, scoring, and stable, helping the pupils understand how different structural features contribute to the strength and function of a castle. The pupils will also learn about design criteria and evaluation, ensuring their models are both realistic and well-constructed.





P.S.H.E.



During P.S.H.E., the children will be focusing their learning on keeping safe in the digital world. The children will cover various units including self image and identity, online relationships, online bullying and privacy and security.

Computing

This unit builds on learning from previous coding units. Children will learn to use selection, co-ordinates, looping and variables. They will use these coding skills to create their own game.

