



Year 4 Newsletter

Spring Term

Welcome back everyone and Happy New Year!

I hope you have had a wonderful Christmas celebrating with your families and friends.

Children will continue to use spelling shed and times table rockstars. Please allow your child time at home to regularly access time tables rockstars and spelling shed as there will be a weekly spelling test on a Thursday. Children will be learning Year 4 spelling rules and will be practising this weekly in school. Please also encourage your child to read regularly, ideally 4 times a week and have their planners signed by an adult.

This newsletter is filled with lots of key information about year 4 for our Spring term, including key dates, PE days and gives you information about what we are going to be learning about this half term, so please read it carefully. If you have any questions or queries, please do not hesitate to come and speak with me.

Miss Jewell and the Year 4 team

Key Dates

13th January—Class Photos
17th January— Cross Country
10th February—Safer Internet Day
11th February—Valentine's Disco
12th February—Yoga sessions
WB 2nd March—Book Fair
2nd/3rd March—Parents' Evening
5th March—World Book Day
WB 9th March—British Science Week
13th March—Mothers' day workshop
20th March—Down's Syndrome Day/Poetry Day
27th March—Rocksteady Concert

Reading

Children's reading and comprehension skill will continue to be built upon through reading both set texts during English and Guided Reading sessions and during our Reading for Pleasure time.

Please encourage your child to read at home 4 times a week and record their reading in their planners. Planners will be checked on Friday.

PE Reminders

PE sessions will be Monday afternoon and Thursday morning this half term. Please ensure children have their indoor kits available for Monday's session as Thursdays session is swimming. A gentle reminder that earrings and other jewellery, including watches must be removed for PE sessions.

Keep up to date....

We will share some of our activities and work on school spider. Please keep an eye on our webpage too, for subject related blogs.

ENGLISH

In English we are starting with our No Outsiders text 'King and King' discussing what marriage is and why people choose to get married.

We will then move onto 'Leon and the place between' where we will be writing a persuasive poster, setting descriptions, exploring dialogue and writing diary entries.

MATHS

In Maths, we will be focusing on multiplication and dividing by 10 and 100. We will also be learning about factor pairs.

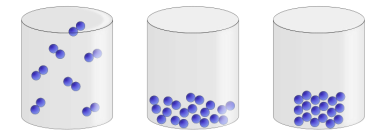
We will also be learning about length and perimeter, exploring equivalent lengths and the perimeter of rectilinear shapes.



SCIENCE

In Science we are going to be learning about States of Matter.

We will be conducting a range of experiments to develop our scientific enquiry skills and working scientifically.



Gas

Liquid

Solid

Our Curriculum Overview

COMPUTING

In Computing we are going to be exploring information technology by looking at spreadsheets, animation and effective searching.

HISTORY

In History we are going to be exploring the Cotton Mill Industry in Manchester.



ART

In Art we are going to be focusing on consolidating and developing our skills in a celebration of the ways food connects us, as families, cultures and communities.

PSHE

Our topic for PSHE this half term is 'Valuing Difference'.



Home Learning

English & Maths

Children are expected to read 4 times per week and reading planners will be checked each Friday for evidence of an adult signature of the four reads.

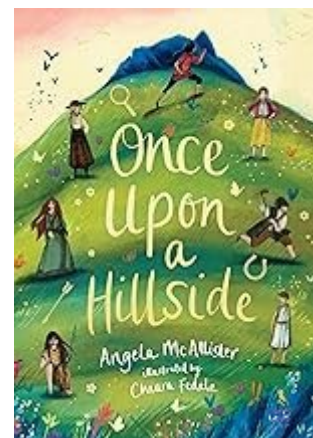
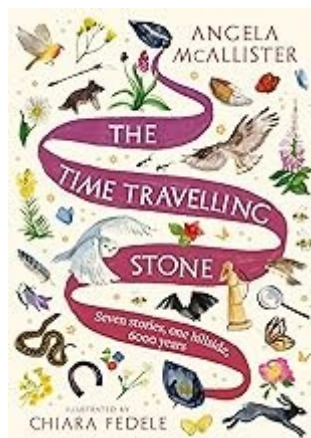
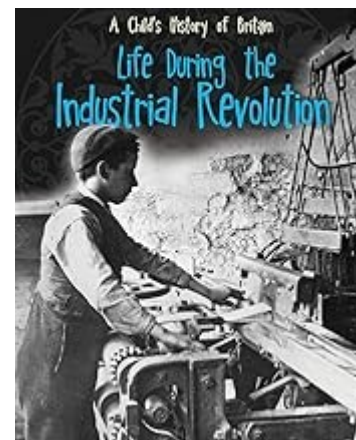
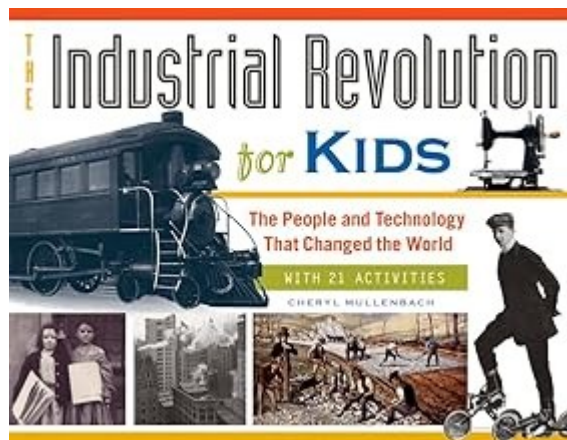
Please also continue to practise times tables regularly. Timetable Rockstars is a great tool for supporting this. Frequent practice is key to helping children with rapid recall.



Spelling

We will be looking at a specific spelling rule each week during class sessions. Children will take part in a weekly spelling test on a Thursday to consolidate their learning and new spellings will be set on spelling shed for the following week. Spelling Shed is a great tool which can be used to support the learning of spellings at home.

To further support independent reading for pleasure, take a look at the suggestions below that are linked to specific topics and authors we are focusing on this half term:



Online Resources:

Times table rockstars - <https://play.trockstars.com/auth/school/student>

Spelling Shed - <https://www.edshed.com/en-gb/login/school>

Purple Mash - <https://www.purplemash.com/sch/james-b15#/portal/james-b15/child>