



# Year 6 Newsletter

## Autumn Term

Welcome back everyone, I hope you have all had a fantastic summer break and are feeling refreshed and ready for the start of a very exciting year.

This is a big year for our new Year 6 students, filled with new challenges, opportunities and the chance to make wonderful memories as they begin their final year here with us at James Brindley.

We have lots of exciting topics we will be covering in class this half term, so please keep up to date with our learning through our class page on the school website, where regular blog updates and photos will be added.

Miss Wilding

### Key Dates:

8th September— Parent Meetings  
12th September— Roald Dahl Day (Dress Up)  
24th September— Flu Vaccinations  
26th September— European Day of Languages  
20th October— Harvest Donations  
24th October— Harvest Assembly  
4th November— Individual Photos  
10th & 11th November— Parents Evening  
28th November— Non-uniform (Xmas fair donation)  
8th December— Christmas Fair  
11th December— Christmas Jumper Day & 6pm Carol Concert

### Reading

Children's reading and comprehension skills will continue to be built upon through reading both set texts during English and Guided Reading sessions and during our Reading for Pleasure time.

### PE Reminders

PE sessions will be **Monday** and **Wednesday afternoons** this half term.

Please ensure children have both their indoor and outdoor kits available for all sessions.

A gentle reminder that earrings and other jewellery, including watches must be removed for PE sessions.

### **Keep up to date....**

Weekly news and photos will be shared on School Spider through a Group Conversation.

Please look out for a notification of these updates.

## ENGLISH

In English we will be using a range of texts including 'The Day the Crayons Quit', 'The Windrush Child' & 'The Man Who Walked Between the Towers' to support our writing of letters, news-paper articles, biographies and narratives.

Our English lessons will also cover specific areas of SPaG each week.

## MATHS

In Maths this term we will be exploring the topic of Number, children will review and develop their understanding of place value and apply this understanding to ordering, comparing and rounding numbers, before we begin to look at the 4 operations of addition, subtraction, multiplication and division. Before transferring this knowledge to their understanding of fractions.

## SCIENCE

In Science we will be exploring the units of Animal, including humans & Evolution and Inheritance.

Children will focus on the circulatory system, how a person's lifestyle can affect the bodies functions, as well as how living things have evolved over time and that characteristics are inherited through their parents.

## HISTORY

In History, children will be exploring units on 'The British Empire' and 'The Shang Dynasty'. They will be developing their ability to use resources to evaluate, describe and justify their understanding of evidence.

## COMPUTING

In computing children will continue to develop their coding skills and apply this to develop, improve and debug programs effectively.

## ART

In Art this half term children will be using a combination of drawing, sculpting and graphic design skills to turn 2D design into 3D sculptures. As well as explore identify through art.

## PSHE/RE

This half term our PSHE unit will be focused around 'Keeping Safe' and we will be exploring the question 'What do religions say to us when life gets hard' in RE.

# Our Curriculum Overview

# Home Learning

## English & Maths

A weekly Maths and English (SPaG and/or comprehension) task will be set each week and should be returned the following Wednesday. These tasks will reflect what has been covered in class that week and are designed to further embed and support children's learning.

We ask that children complete these tasks independently and seek help within school should they need to.

## Spelling

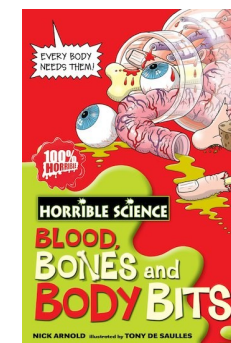
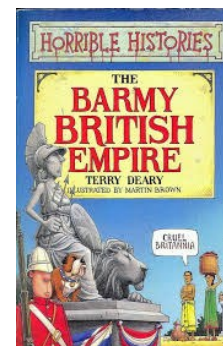
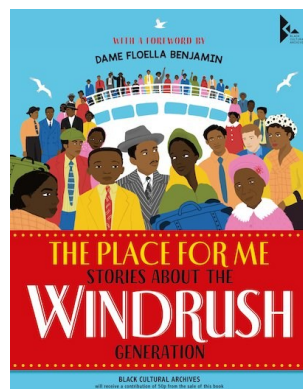
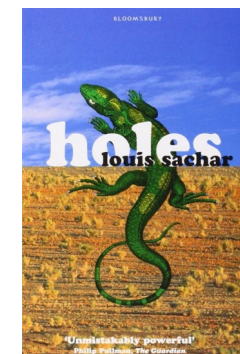
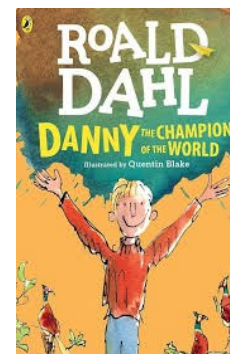
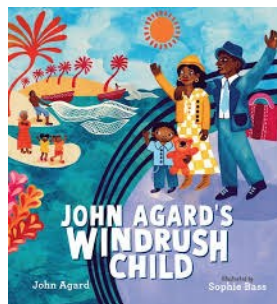
Children will focus on a key Year 6 spelling rule within class each week.

Spellings will be uploaded on to SpellingShed each Friday for the children to support their learning at home.

A weekly test will take place each Friday.

Children are expected to read 4 times per week and reading planners will be checked each Friday for evidence of an adult signature of the four reads.

To further support independent reading for pleasure, take a look at the suggestions below that are linked to specific topics and authors we are focusing on this half term:



## Online Resources

- Spelling Shed
- Timestable Rock Stars