

Year 4 Mathematics Homework

Time

Tick your answer to each question, like in the example below. You can use any space left below or around a question for your working out, if you need it.

Example Question

$$1,435 + 2,870 =$$

- a 3,205
- b 4,305
- c 3,295
- d 5,110

- 1 A tree is 64 months old.
How many years has it been growing for?

- a 768 years
- b 5.4 years
- c 6 years and 4 months
- d 5 years and 4 months

- 4 How many days are in a leap year?

- a 300
- b 360
- c 365
- d 366

- 5 Which of the following is the longest amount of time?

- a 1 year
- b 36 weeks
- c 24 months
- d 30 days

- 6 What time does the clock show?

- a 3:51
- b 10:04
- c 4:51
- d 4:10



- 2 What time does the clock show?



- a 4:35
- b 3:30
- c 3:07
- d 3:35

- 3 Write 9:07pm in 24-hour time.

- a 09:07
- b 9:07am
- c 19:07
- d 21:07

- 7 Ali times himself running around the field. He takes 360 seconds.
How long does Ali take in minutes and seconds?

- a 6 minutes
- b 3 minutes and 60 seconds
- c 60 minutes
- d 36 minutes

- 8 Write 4:24am in 24-hour time.

- a 14:24
- b 16:24
- c 04:24
- d 4:24pm

- 9 Jacob finishes his after school club at 4:30pm.
It takes him 20 minutes to walk home. What time does he get home?

- a 4:10pm
- b 4:50pm
- c 4:40pm
- d 50 minutes

10 Which clock shows the time 9:40?

a



b



c



d



11 Hamza has borrowed a library book for six weeks. It has been 28 days since he borrowed it. How many days does he have left before he must give the book back?

a 2

b 42

c 14

d 22

14 Which of the following is the longest amount of time?

a 45 minutes

b half an hour

c 10 minutes

d 30 seconds

15 Rhys has a watch that shows 24-hour times. It is 3:45pm. What time does his watch show?

a 16:45

b 15:45

c 03:45

d 13:45

16 Sophie wants to watch a film. The film is 2 hours long. How many minutes long is the film?

a 2 minutes

b 60 minutes

c 200 minutes

d 120 minutes

12 Convert 20:18 from 24-hour to 12-hour time.

a 8:18pm

b 8:18am

c 10:18pm

d 20:18pm

13 Which clock shows the time 7:28?

a



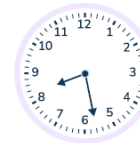
b



c



d



17 Complete the sentence using 24-hour time. is quarter past six in the morning.

a 05:45

b 06:15

c 17:45

d 18:15

18 The 24-hour time on Mara's clock says 20:58. What time should her analogue clock show?

a



b



c



d

