

Key Vocabulary

Natural Disaster – a natural event that causes great loss of life (hurricane, flood, earthquake)

Environment – the surroundings in which we live.

Residential – areas where people live.

Commercial – places that make money e.g. shops.

Recreation – activities we do for fun e.g. swimming pool, rugby club.

Leisure – free time when you aren't at work or school.

Public Services – organised by the government e.g. hospitals, police, buses and trams.

Fieldwork – practical activities done away from school in the environment.

Orbit – the path a planet or object in space makes around something else.

Redevelopment – changing something, an area.

Why do places change?

- Storm Desmond hit the North West in 2015 and flooded Glenridding.
- The London Borough of Newham was redeveloped for the London Olympic Games in 2012.
- Some changes are made by people choosing change, others are not.

Why places change?



Flooding



Deforestation



Redevelopment



Year 3 – Summer 1 Changes in my Local Area

Satellite Images



How do NASA satellite images inform us on environmental change on a global scale?

- Satellites are man-made machines that orbit the Earth.
- They collect and transmit information and take photos of the Earth.
- Gathering and investigating these images is known as remote sensing.

How and why does the quality of the environment change in my local area?

- We will create maps of our local area.
- We will evaluate our local area – human and physical features.
- We will carry out fieldwork to investigate our local area.
- We will use our data to present our findings.

St Agnes Primary School




Now




In the past

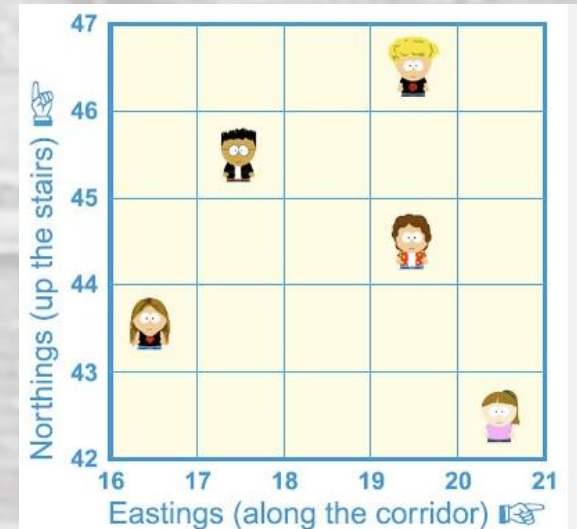
Maps

A grid reference allows someone to mark a place on a map by using the vertical (northings) and horizontal (eastings) lines.

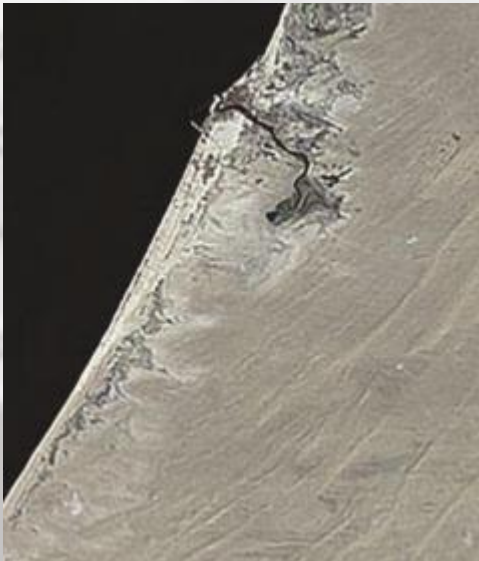
Which 4 figure grid reference is  at?

Go along then up.

 is at grid reference 19,46



Aerial Photographs Showing Changes in Dubai



1973



2008