



ENDEAVOUR
LEARNING TRUST



WELCOME TO LINAKER PRIMARY SCHOOL

RECEPTION PARENT
INFORMATION BOOKLET 2025



#TEAMLINAKER

TOGETHERNESS EMPATHY ASPIRATION MUTUAL RESPECT

≡Welcome≡ TO RECEPTION

The Early Years Foundation Stage (EYFS) continues until the end of the Reception year. The EYFS curriculum is based on the three prime areas of learning: Personal, Social and Emotional Development, Communication and Language and Physical Development; together with the four specific areas of learning: Literacy, Mathematics, Understanding the World and Expressive Arts and Design.

At Linaker Primary, we pride ourselves on delivering a progressive and exciting curriculum for all our pupils so that they can flourish throughout their primary education and beyond.

There are two Reception classes, however the children learn within an open plan classroom and the outdoor classroom at all times throughout the day. We pride ourselves in promoting an oracy rich environment and place the development of children's communication and language at the forefront of what we do.

Children have daily RWI phonics sessions each morning, which teaches children sounds, the letters that represent them and how to form letters when writing. Children are then taught to 'orally blend' sounds together to read words in books which are carefully matched to their phonic ability. We have a short daily mathematics carpet session each afternoon, before continuing our learning in the continuous provision with a balance of adult and child-initiated learning through play.



MEET OUR TEACHERS

Hello! We are Miss Wilcox and Miss Parkin and we will be your teachers when you start at Linaker Primary School in Reception Class.
We can't wait to meet you!



All About Miss Wilcox:

I have 2 children, Charlie and Lily and spend most weekends watching them play football or walking on the beach. A few of my favourite things are...

Colour: Green

Food: Pizza

Sport: Football

Animal: Leopard

Season: Autumn

Hobby: Baking

Children's book: Peace at Last

All About Miss Parkin:

I have a dog called Pip, who I love very much. At the weekend, I enjoy catching up with my friends and family. A few of my favourite things are...

Colour: Pink

Food: Pasta

Sport: Football

Animal: Dog

Season: Summer

Hobby: Cooking

Children's book: The Tiger Who Came to Tea



OUR LEARNING ENVIRONMENT

We are so excited to welcome you to Linaker Primary!

We operate a free-flow learning environment so the children can use and explore all of the learning spaces all of the time.

You might like to read stories, build towers, send messages, tell and act out stories or use numbers and shapes in your exploring time.

Perhaps you will explore water, build big buildings or vehicles, create dens, play instruments or create transient art.

WHERE WILL YOU EXPLORE FIRST?



UNIFORM



We wear our Linaker Primary uniform with pride.

It is school policy that all children should wear the full school uniform and parents/carers are therefore requested to cooperate fully with this. The wearing of uniform is encouraged to promote a sense of pride, a sense of belonging, assumed equality, and for Health and Safety. Please ensure that ALL items of school uniform are clearly labelled. All uniform can be purchased from school and Whitakers, Southport. Shoes should be sensible and appropriate for school. Trainers are not to be worn for school.

UNIFORM

- White polo shirt
- Purple jumper/cardigan
- Grey trousers/skirt
- Grey/white socks or tights
- Sensible black shoes.



PE KITS

To be brought in at the beginning of each half term and taken home at the end to be washed.

- White t-shirt
- Black shorts
- Black pumps



MORNING ARRANGEMENTS



Children enter the Reception outdoor classroom via the gate on Linaker Street. The gates will open at 8.45 am. Parents/carers should bring their child to the ramp outside the Reception classes where staff will greet your child and help them to develop their independence to take their own coat off, hang it up and put away their bookbags before completing a morning activity in the classroom.

HOME TIME ARRANGEMENTS



The Reception day finishes at 3.25pm. Please wait outside in the Reception Garden for your class teacher to call your child's name one at a time. This ensures that your child is safely handed over.

It is of paramount importance that parents/carers do not crowd the Reception doorway at home time. Please be patient in order to ensure a safe transition from school to home.



SNACK



Children receive a piece of fruit and a drink of milk/water each day. In addition, we offer a selection of other healthy snacks such as toast, cereal, fruit loaf, yoghurt, cheese and crackers.

We ask for a voluntary donation of £1 each week towards snack which should be paid half termly, where possible.

We ask children to bring a water bottle to school each day, which will be returned home at the end of each day for refilling.



HOT DINNERS



All children in from Reception to Year 2 receive a free school meal. Our menu offers a wide variety of choices each day and caters for many dietary needs, such as vegan and Halal.

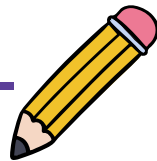
You will be able to choose your child's meal choice in advance via the school app.

PARENTAL COMMUNICATION

- The Arbor app is our primary source of communication. Important messages will be sent via the app. If you don't have the app, please speak to the office staff.
- Regularly check the school website for all of the latest news and information.
- Follow us on Instagram and Facebook for regular updates
 - 'Linaker Latest' weekly newsletter
- The school email address is office@linaker.org.uk
- If you need to talk to your child's teacher, please make an appointment at the office for after school.



OUR SCHOOL DAY



Morning

8.45-9am	9-9.10am	9.10-9.30am	9.30-10.50am	10.50am	11.00am	11.30am	11.45am
Name writing practise/ reading for pleasure	Dough Disco	Literacy Input/ groups	Continuous provision Independent challenges/ teacher led activities	Tidy up time	Phonics	Whole class story time	Lunchtime

Afternoon

12.50-1pm	1.00-1.15pm	1.15pm-2.30pm	2.30-2.40pm	2.40-2.55pm	2.55-3.20pm	3.25pm
Registration	Mathematics Input/ Groups	Continuous provision/ Independent challenges/ teacher led activities	Tidy Up time	Phonics Blast	Whole class story time	Home time



USEFUL INFORMATION



Reading books

Please bring book bags and books to school every day.

Absence

Please inform the school office via the Arbor app by 9am if your child will be absent due to sickness. If your child has a medical appointment please provide evidence to the office.

Uniform

Please ensure all uniform is labelled with your child's name – coats, hats, scarfs, PE kits.

Lunch and Snack

All Reception children receive free school milk. We ask for a weekly contribution towards the children's snack of a £1 per week. It enables us to provide a range of snack such as toast, crumpets, crackers and cheese and many other healthy snacks to accompany the fruit.

Water Bottles

Water bottles – Please can your child bring a water bottle, filled with water not juice into school each day. They are encouraged to drink water regularly to keep hydrated.

