

# Art Knowledge Organiser

## Autumn

**impressionism**- a style of painting that focuses on the effects of light and atmosphere on colours and forms.

**impression**- the representation of an object or a scene created by an artist.

**tint**- when you add white to a colour to make it lighter.

**tone**- refers to lightness or darkness of something.

**shade**- when you add black to a colour to make it colour darker.

**hue**- pure colour.

**transparent**- when light passes through a material.

**opaque**- when light does not pass through a material.

**wash**- a very thin layer of paint used to just cover the surface.

**graded wash**- a gradual change in colour as the wash progresses.

**lifting off**- the process of removing the paint after it has been applied.

**splattering**- a painting technique in which paint is flicked onto the painting surface.

**dry brush**- a painting technique when a relatively dry brush holds paint.

**wax resist**- a technique that keeps paint from staying on an area of paper.

**wet on wet**- applying wet paint onto another wet layer of paper

**layering**- letting one layer of paint dry before adding another.

## Spring

**third dimension**- art with all the dimensions of height, width, and depth.

**scale**- the physical size of an artwork or objects in the artwork.

**proportion**- the relationship of the size of one element when compared to another.

**pattern**- a design in which lines, shapes, forms or colours are repeated

**texture**- how something feels, including its appearance and consistency.

**portrait**- a representation of a particular person.

## Summer

**textiles**- creating something using fibres, such as cloth or woven fabrics.

**fabric**- a cloth or other material produced by weaving together threads.

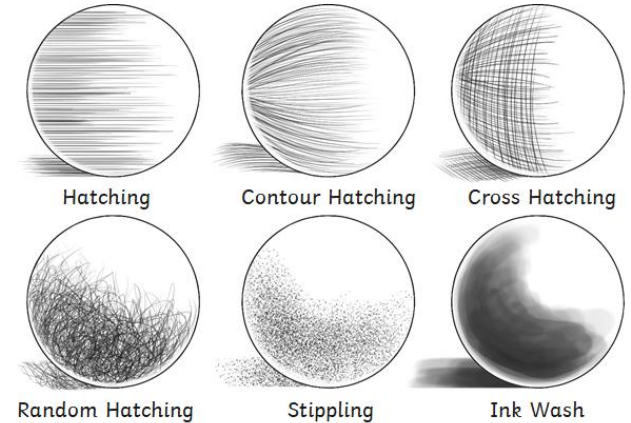
**material**- what things are made from.

**Batik**- a traditional art-form which involves using wax and dye to create patterns.

**resist paste**- a wax applied to cloth before being dipped in dye.

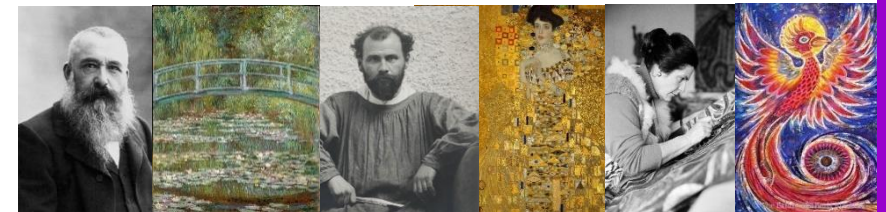
**dye**- a substance used to colour textiles.

## Sketching techniques



## Artists

Claude Monet, Gustav Klimt



## Colour wheel

