



## Class 2

Information evening  
September 2025

# A bit about me

- Qualified as a Teacher in 2009
- Taught Years 2/3/5/6 over this 16-year period.
- Many years experience in Year 2
- My son is currently in Year 4 at a local school and my daughter is in Year 1
- My favourite subjects are Maths and PE
- I am out of class on Wednesday for planning time and SENDCo time.
  - Mrs Keenan will teach on Wednesdays.

## Year 2

- Important year at the end of KS1.
- No SATs this year, but we will still have in-school assessments.
- Nativity performance in December
- No residential.
- Typical day consists of Maths, English, Phonics, Reading and two foundation subjects.



# Planners

- Planners are put in baskets on the children's tables everyday. These are not always checked by the adults in class.
- If you have a note we need to see, ask your child to share it with us (we do ask).
- If it's more urgent, email myself or the admin team.
- Please make sure you write in your child's planner when they read to you each night.

# Autumn

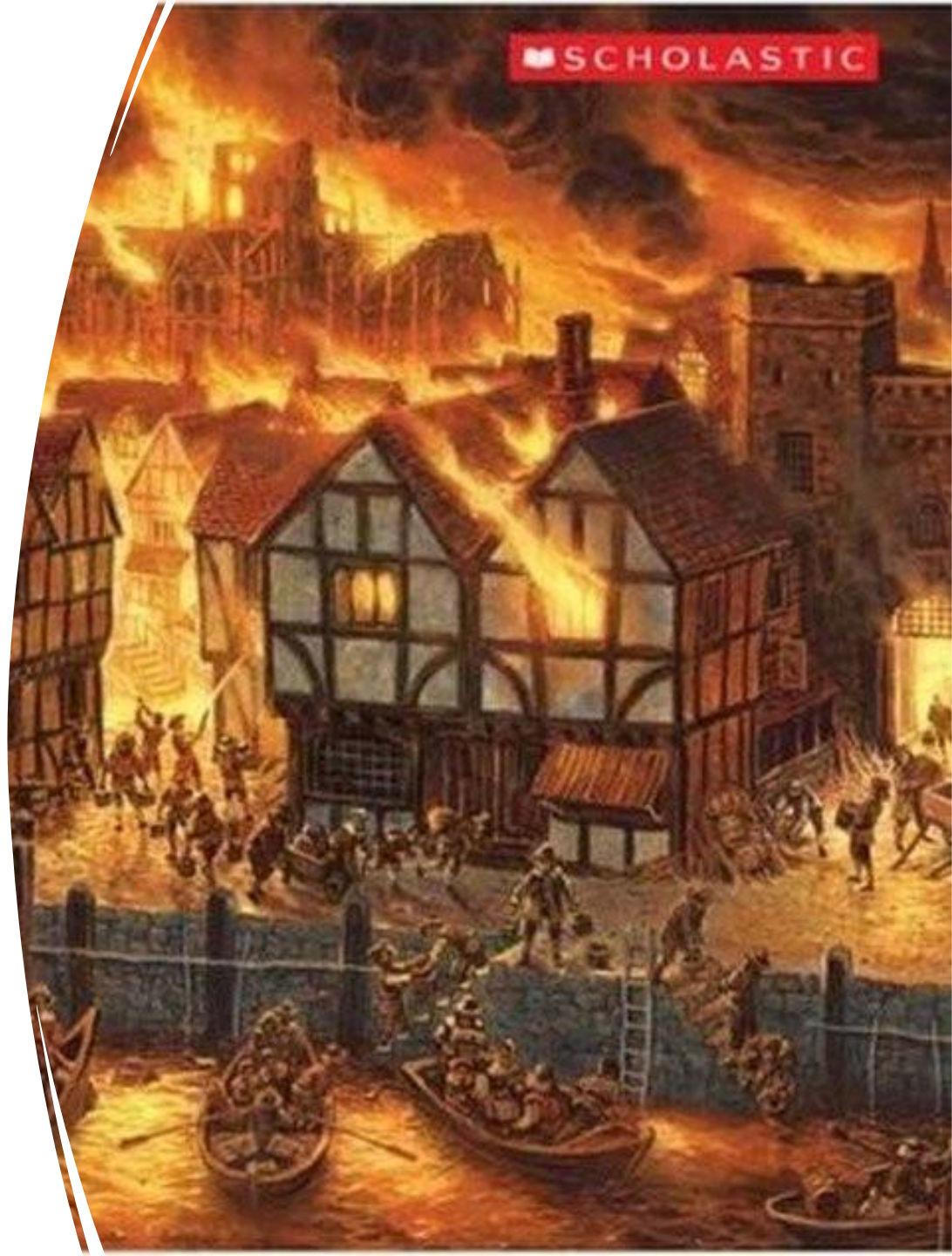
- **Our United Kingdom:**
  - **Countries of UK**
  - **Capitals of UK**
  - **Seas surrounding UK**
  - **Fire of London**





# Spring

- **Fire, Fire!**
  - Fire of Nantwich
  - Compare Fire of London to Fire of Nantwich





# Summer

- **Our Wonderful World:**
  - Continents and Oceans
  - Explorers in recent history
  - Humans and keeping healthy.

# Spelling/Phonics

## Year 2 Little Wandle spelling programme

### Initial assessments to place children in correct groups.

- Most children will do 5-week review of Phase 5, before starting a 5-week 'Bridge to Spelling' programme then a 20-week Year 2 spelling programme.
- Some children will complete Phase 3/4/5 'Rapid Catch-up' programme, before starting the Bridge to Spelling later in the year. These children will be invited to attend intervention groups before school.



# Reading

- All children have had an initial assessment and some children moved on accordingly.
- All children will have a book at the correct band for them, and a 'Reading for Pleasure' Y2 book. This book can be read by the child; an adult; or a combination of both.
- When your child has finished their book, they can change it the next day in school.
- Adults in school will listen to every child at least once a week so assessments/moving up bands will be made when we feel it is appropriate to do so.
- Please listen to your child every night and record in their planner that they have read.

# PE

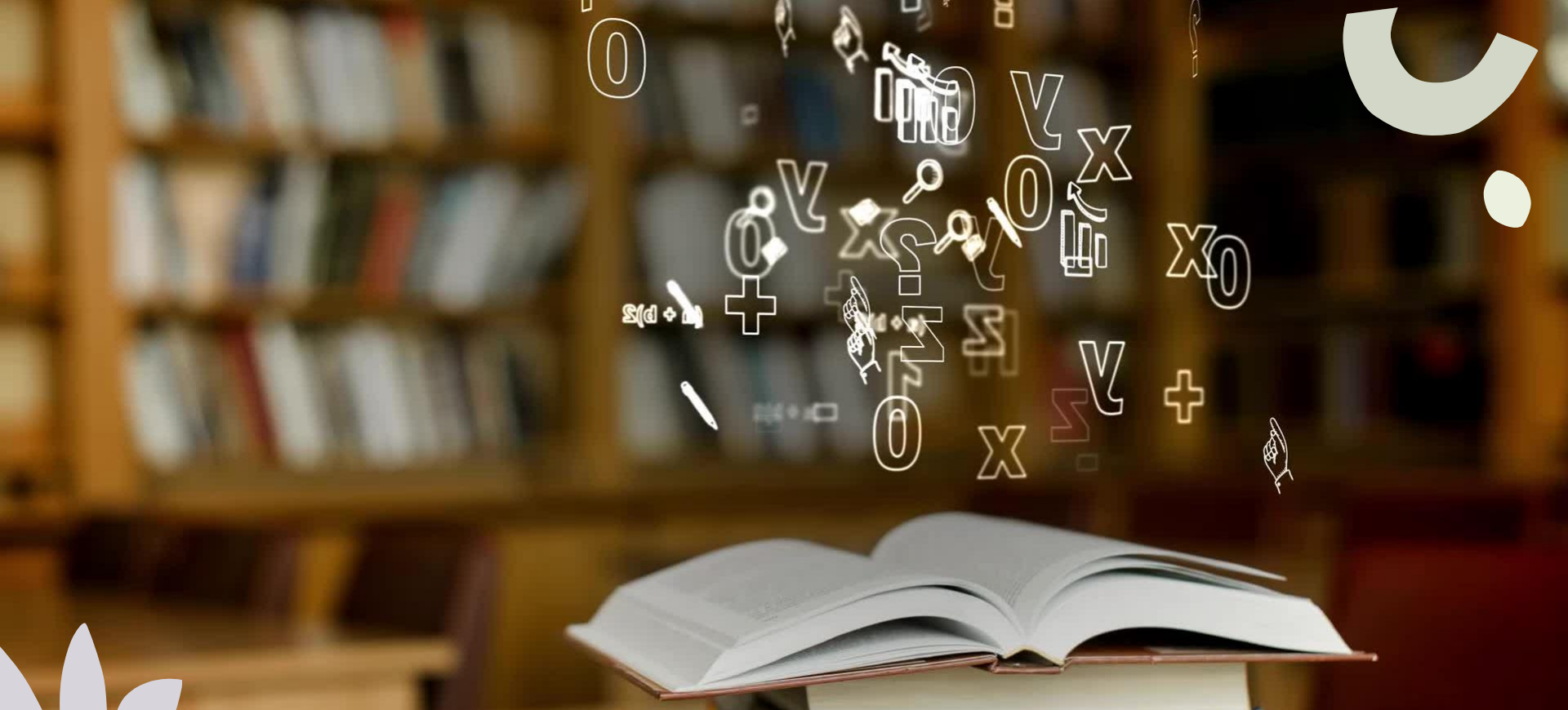
- Autumn – Rugby and Football to half-term, Sportshall Athletics and Fitness to Christmas
- Spring – Dance and Netball to half-term, Gym and Hockey to Easter
- Summer – Cricket and Athletics to half-term, Rounders and Orienteering to summer break.
- Tuesday and Thursday
- We will keep PE kits in school until H/T (unless they get dirty).

# Homework

- Homework grids will come out tomorrow.
- Blue boxes are compulsory boxes; white are optional.
- Please return on the date given (Monday of the last full week each half-term).
- Encourage the children to do as much as they can independently.
- Don't fall out over it. Something is better than nothing.







## Spelling

- We check children's spellings of the statutory words termly. Please practice these weekly with your child. They will be in the homework book.





## **Trips**

- Trips are still being confirmed, but a booking has been made at Nantwich Museum in the Spring Term to aid our learning on the Fire of Nantwich. More information will come out nearer the time.
- I will also be booking a trip to Delamere Forest in the Summer Term to support our leaning about Habitats in science.



---

## If you need to speak to me, you can

See

See me at home-time for a quick chat

Call

Call via the office to arrange a face-to-face appointment

Email

Email  
[mbeeston@stapeleybl.cheshire.sch.uk](mailto:mbeeston@stapeleybl.cheshire.sch.uk)

**Any questions?**