



# Stanley Primary School



## OUR SCHOOL PROSPECTUS



# INTRODUCTION



Welcome to **Stanley Primary School** where each child is valued as an individual and supported to achieve their maximum potential. Within our '[Stanley Values](#)' we support our children to develop key life skills such as confidence, responsibility and teamwork. Above all, we wish to instil a love of learning. I am extremely proud to lead a team that is committed to our children's well-being, achieving high standards and providing the best opportunities for all in their care. Our staff, supported by our Governors, work hard to deliver a rich and challenging curriculum which prepares our children for their future education. We strive to help them acquire the skills and enthusiasm needed to embrace the opportunities, responsibilities and experiences of later life. Our school has a very warm, welcoming family ethos created by our caring, supportive and friendly environment. It is our firmly held view that children will learn best when parents and school work closely together and we hope you will encourage your child to contribute to the life of the school and to take part and enjoy the many opportunities available. We hope you find all the information you need about our school on the website, but please contact us if you need any further information.

***Mrs SJ Murphy***  
***Headteacher***

# Our Vision

***'Learning together to create opportunities and experiences that enable our pupils to achieve their full potential'***





# Our Values

Our children and staff are 'Proud to be Purple' in our 'Stanley Family' as we focus on/being:

**S**ensible  
**M**otivated  
**A**iming High  
**R**esilient  
**T**eamwork  
**E**nthusiastic  
**R**espectful

We aim to foster these values through being '**SMARTER**' within our '**Stanley Family**'.

These values are developed in Stanley Primary School through the broad and balanced curriculum we offer. Through each subject we aim for our pupils to be engaged, inspired, and challenged, with a clear focus on enquiry-based learning whilst acquiring new language to build knowledge, skills and concepts.



# What did Ofsted say?

Stanley Primary School  
Proud to be a **GOOD** School



*"The school strives to achieve its value of aiming high for pupils in all aspects of school life"*



Ofsted  
Good Provider

**"The school strives to achieve its value of aiming high for pupils in all aspects of school life. This is reflected in the high ambition that the school has for pupils, including those with special educational needs and/or disabilities (SEND)."**

**"Pupils embrace the learning opportunities that the school provides for them. Many pupils leave the school well prepared for their next stage of education."**

**"Pupils are kind, considerate and take pride in being part of the school community."**

**"Pupils are keen to follow adult instructions and to live up to the high expectations of behaviour that the school has."**

**-Ofsted 2023**





# What did Parents say?

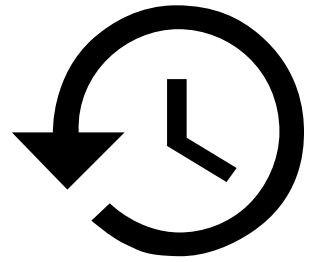
**"All 3 of my children have attended Stanley primary school and I have NEVER had a single issue with any teachers, the school it's self or bullying. Stanley is without a doubt the best primary school in Blackpool and I'm really happy it's the school I chose for them."**

**"Outstanding school inside and out from education to each and every staff member.**

**I had strong hopes for both of my children attending this school prior to even looking around and Stanley school most definitely and exceeded my expectations. Both of my children thrive to learn and are more than happy to attend school each and every morning."**

**-Parent/Carer  
Survey 2025**

# The History of Stanley



**Stanley Primary School** has been at the heart of the Blackpool community for many years, providing high-quality education to generations of children. The school was originally **two separate schools, Stanley Junior School and Stanley Infant School**, before **we amalgamated in 2006** to form the single, thriving primary school that exists today.

Named after the **Stanley family**, who played a significant role in Blackpool's development, the school has grown and adapted over time to meet the needs of its pupils. The expansion brought together the strengths of both schools, creating a seamless learning journey from **Early Years through to Year 6**, while maintaining a strong sense of tradition and community.

One of our school's key connections to the local area is **Stanley Park**, a beautiful 390-acre green space that our students regularly visit for school trips, outdoor learning experiences, and sporting events. Opened in 1926, Stanley Park is one of Blackpool's most treasured landmarks, offering fantastic opportunities for children to engage in nature, history, and physical activities. Our students take part in cross-country races, team sports, and environmental studies within the park, making it an important extension of our learning environment.

Throughout our history, Stanley Primary School has maintained a strong focus on traditional values while embracing modern teaching methods and technologies. Today, the school continues to be a vibrant and inclusive place where children are encouraged to develop a love of learning, confidence, and respect for others.

As we look to the future, we remain dedicated to providing a safe, supportive, and stimulating environment where every child can thrive—both inside and outside the classroom.



# Our Facilities

**Stanley Primary School** caters for **up to 630 children between the ages of 4 and 11 years**. The school's current admission number is 90 children and each of the seven year groups are organised into three mixed ability classes.

The Key Stage One department of the school caters for children in Reception to Year Two and the Key Stage Two Department for Year's Three to Six.

Our school is situated in extensive grounds which include **three playgrounds, large fields, woodland areas and enclosed gardens**. In addition, the Reception children have use of an outdoor area for continuous provision. The school has a **MUGA** (Multi Use Games Area) which is used for school activities (both during and after school).

We have **two large school halls**, one in KS1 and one in KS2. These are used daily for PE, lessons and assemblies. At various intervals in your child's life at Stanley they will also be a part of a year group performance which is performed on the school hall stages.

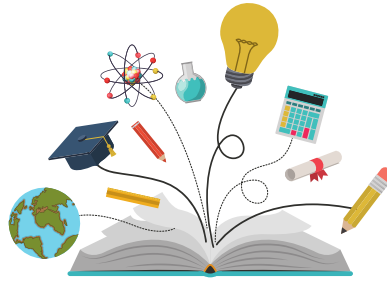
Our own **kitchen** provides cooked healthy meals with a variety of choices, or children can choose to bring a packed lunch.

All classrooms are well equipped with **visualisers** and **interactive boards** and we have several **mobile IT suites** containing iPads or chromebooks.

We have **two libraries** offering an extensive choice of fiction and non-fiction books for children to borrow.



# Curriculum



At Stanley Primary School we believe in making learning **meaningful, challenging and memorable** for our children.

We aim to provide **opportunities** for children to develop as independent, confident, successful learners with high aspirations who know how to make a positive contribution to their community and the wider society.

Our curriculum is centered around the **aims and values** of our school and has been designed to respond to the particular needs of our community. Through considering the knowledge and skills to be taught, as well as the levels of ability of the children, our teachers create exciting, engaging and motivating learning journeys.

Our teaching units are carefully planned to ensure coverage and progression and enable our pupils to make connections and build on their prior knowledge and understanding within a context. Teaching through a context for learning encourages the planning of knowledge-rich experiences that inspire and bring joy to teaching and learning. We believe that children draw from these rich experiences and this is reflected in the quality of education provided by our school.





# Curriculum Drivers

## Community

Helping our pupils to establish a sense of belonging and a respect of diversity, equality and British values within the local and wider community.

## Opportunities

These help pupils become aspirational by providing opportunities and experiences so they know the possibilities available for their future lives.

## Challenge

To motivate and build resilience in our pupils, encouraging them to think positively; take risks and aim to be the very best that they can be.

## Communication and Language - EYFS

To help our pupils to communicate effectively with each other and express their ideas so that they become comfortable using a rich range of vocabulary and language structures.

## Character

Nurturing and educating our pupils to help them develop the characteristics needed to become successful learners, well-rounded individuals and responsible global citizens.

DREAM BIG,  
WORK HARD,  
— MAKE IT —  
*happen.*



# Lessons & Opportunities

We have an **ambitious curriculum** for all our pupils and we strive to achieve each child's potential in the broad range of subjects we offer. We teach the **National Curriculum in all subjects**. We chose **Spanish** as our modern foreign language which is taught from Y3-Y6.

**PSHCE and RSE** are taught by our class teachers as stand-alone lessons, however themes are often explored across the curriculum in other subjects. Religious Education is based on the Lancashire Agreed Syllabus and each half term our pupils are presented with a reflective question to provoke thought and discussion about different religions.

Some children experience difficulties in accessing the curriculum and wherever necessary, additional support is provided. Some children will be identified as having Special Educational Needs (SEN) and in partnership with parents/carers, our Special Educational Needs and/or Disabilities Co-Ordinator will work with you to support your child.

During **assemblies**, children learn about British values which supports our teaching of the values across the curriculum to support our moral, social, spiritual and cultural teaching. Children also enjoy celebrating each other's achievements in addition to welcoming visitors into school to enrich social and cultural experiences.

We offer many **school visits** throughout the school year and we enter many competitions both sport and curriculum based to enrich the curriculum and provide our children with experiences outside the classroom.

# Extra-Curricular Activities

At Stanley Primary School, we believe that education extends beyond the classroom. Our comprehensive extra-curricular programme is designed to complement the academic curriculum and foster the holistic development of our pupils. We aim to provide enriching experiences that cater to a wide range of interests and talents, helping our students explore new passions and build lasting skills.

Our extra-curricular activities offer something for everyone. Whether your child is interested in sports, arts, music, or academic clubs, we have activities that will engage and inspire them. Here are some of the examples of clubs we run throughout the year:

- **Football**
- **Multi-skills**
- **Athletics**
- **Taekwondo**
- **Dance**
- **Drama**
- **Choir**
- **ECO Squad**
- **Cricket**

Participation in extra-curricular activities helps develop essential life skills such as leadership, communication, and resilience. Our dedicated staff and coaches provide guidance and mentorship, ensuring that every child feels supported and motivated to reach their potential.

We encourage all students to get involved and make the most of the opportunities available. Extra-curricular activities are an excellent way to meet new friends, discover new interests, and enhance personal growth. At Stanley Primary School, we are committed to nurturing well-rounded individuals who are ready to take on the world.



# Pastoral & Wellbeing

At Stanley Primary School, we are deeply committed to the pastoral care and wellbeing of our students. We believe that a supportive and nurturing environment is essential for academic success and personal growth. Our comprehensive pastoral care programme is designed to ensure that every child feels valued, safe, and empowered to thrive.

Our approach to wellbeing is holistic, focusing on the emotional, social, and mental health of our students. We strive to create a culture of care where pupils feel comfortable expressing their feelings and seeking support when needed.

## Pupil Engagement Officer



Our dedicated Pupil Engagement Officer is on site every day, actively working to build strong relationships with our students. They provide guidance and support, helping pupils navigate any challenges they may face and encouraging positive behaviour and engagement.

## School Home Support



Available on site three days a week, our School Home Support team plays a crucial role in bridging the gap between home and school. They work closely with families to address any external factors that may impact a child's learning and wellbeing, offering practical support and advice.

## Student Council/House Captains & Senior Prefect Teams/Head Boy & Girl



Our student council and senior prefect teams are integral to our school community, providing a platform for student voices to be heard. These student leaders support their peers and contribute to fostering a positive and inclusive school environment.

## Pastoral Support - School Library



Our school library serves as a peaceful haven where students can spend time with a dedicated pastoral member of staff. This setting offers additional support and a quiet space for reflection and personal growth.

We believe that everyone in our school community plays a role in fostering a supportive environment. Our teachers, staff, student leaders, and parents work collaboratively to ensure that every child receives the care and attention they need. Regular communication with parents and carers is a cornerstone of our approach, enabling us to tailor our support to each student's unique needs.

# Parent/Carer Involvement



At Stanley Primary School, we believe that a strong partnership between home and school is vital for the success and wellbeing of our students. We are committed to creating an inclusive and welcoming environment where parents and carers feel actively involved in their child's education and school life.

## Engaging Activities & Workshops:

- **Parent Activity Mornings & Workshops:** We regularly host activity mornings and workshops designed to engage parents and carers in their children's learning. These sessions provide insights into the curriculum and offer practical strategies to support learning at home.
- **Reception Stay and Play:** Our "Stay and Play" sessions for Reception classes offer parents and carers the chance to spend time in the classroom, interacting with their child and experiencing the school environment firsthand.
- **Reading Workshops:** To foster a love of reading, we organise workshops that equip parents with tools and techniques to support their child's literacy development at home.

## Community & Celebration:

- **PTFA Events:** Our Parent, Teacher, and Friends Association (PTFA) organises a variety of events throughout the year, bringing families together to support the school. These events are a wonderful opportunity to meet other parents and contribute to our vibrant school community.

## Celebrating Together:

- **Seasonal Assemblies:** We celebrate the changing seasons and important cultural events with assemblies such as Christmas, Harvest, and Nativity. These occasions provide opportunities for families to come together and celebrate as a community.
- **Gold Assemblies:** Our Gold Assemblies recognise and celebrate student achievements, fostering a sense of pride and accomplishment. Parents are invited to join us in acknowledging their child's hard work and successes.
- **Sports Day:** Our annual Sports Day is a highlight of the school calendar, bringing together students, parents, and staff for a day of friendly competition and fun. Families are encouraged to cheer on their children and participate in activities, strengthening our sense of community and camaraderie.

## Open Communication & Support:

- **Parents' Evenings:** Regular parents' evenings offer a structured opportunity for parents and carers to discuss their child's progress with teachers. These meetings strengthen the home-school connection and ensure that families are informed and engaged.
- **SLT on School Gates:** Our Senior Leadership Team is present at the school gates every morning and afternoon, providing an approachable and accessible point of contact for parents and carers. This presence fosters open communication and builds strong relationships within our school community.

**At Stanley Primary School, we are dedicated to building a collaborative and supportive community. We invite all parents and carers to actively participate in school life, ensuring that every child receives the support and encouragement they need to thrive.**



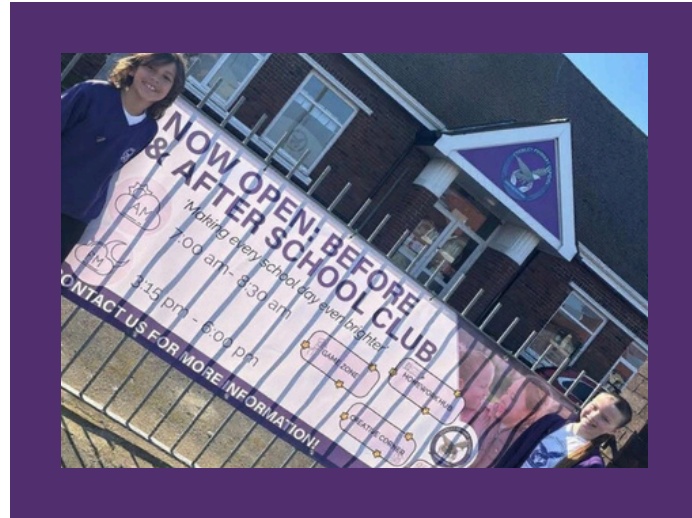
# Support Beyond The School Day

## Stanley Hub

We offer high-quality wraparound care before and after the school day in a safe, welcoming environment, led by our experienced staff. Children can enjoy a range of activities, a light breakfast or snack, and a relaxed start or end to their day.

All sessions are booked via Arbor. We also accept Tax-Free Childcare and Universal Credit.

[Further information can be found on our website!](#)



### Morning Sessions:

- 7:00am - 8:30am
- £4.50



### Afternoon Sessions:

- 3:15pm - 6:00pm
- £8



### Blackpool FC Community Trust

*"As a charity we understand the need of our community and consciously provide a service that is affordable, sensitive to working parents and yet doesn't diminish the quality of delivery. We are delighted to continue our sports camps at Stanley Primary and build on our partnership. Children of all ages and abilities came together to create an enjoyable environment each day."*

## BFCCT Sports Camps

Following a successful trial, Stanley Primary School is pleased to continue its partnership with Blackpool FC Community Trust, delivering fun and engaging Sports Camps, for the foreseeable future.

Camps run Monday-Friday (excluding bank holidays), 8:00am-5:00pm, costing £13 per day or £55 per week. Stanley Primary is proud to be one of seven host venues, with sessions led by experienced sports coaches and school staff.

Open to children aged 5-14, the camps provide a safe, inclusive environment where children of all abilities can have fun, build confidence, and develop new skills.

Activities include: football, dodgeball, cricket, dance, playground games, board games, and gaming consoles.

Children should wear suitable clothing and trainers, and bring a packed lunch and drinks. Places are limited, so early booking is recommended.

Booking information will be shared at least three weeks before each camp.



# Admissions

Stanley Primary School follows the admission guidelines set by Synergy Education Trust, these guidelines are available on our school website. Our school aims to offer a place to every child who is eligible, and we strive to make the process as smooth as possible for both parents and children.

## Who Can Apply?

We admit children aged 4-11, with places available in both our Reception and Key Stage 1 & 2 classes. Children are generally admitted into Reception in the academic year they turn five. However, we welcome applications for other year groups if there are vacancies.



## School Tours & Open Days:

We understand how important it is to choose the right school for your child, and we are happy to show you around. Please contact our school office to arrange a visit. You will have the opportunity to meet our staff, see our facilities, and learn about our curriculum and school life.



## How to Apply?

### Reception Applications:

Applications for children starting school in Reception are managed by Blackpool Council. The application window for Reception places typically opens in September and closes in January for the following academic year.

- You can apply online via the Blackpool Council website or submit a paper application form if preferred.
- It is important to submit your application by the deadline to ensure your child is considered for a place at Stanley Primary School.

### In-Year Applications:

If you are moving to the area or seeking a change of school, you can apply for an in-year transfer at any time during the academic year. These applications are managed by Blackpool Council.

- To apply for an in-year place, please visit Blackpool Council's website by clicking [here](#). We strongly advise you have a visit to our school before placing the application.
- You will be informed as soon as possible if a place is available for your child.



# Starting School

Starting school is such an exciting time, and love welcoming new children into our school family! At Stanley Primary School, we understand that each child is unique, and we make sure that every new pupil feels safe, supported, and happy as they begin their journey with us.

**Here's a little insight into how we make the transition into school a smooth and enjoyable experience for all our new reception starters and children joining in other year groups.**

## For Reception Starters:

We know that starting school is a big step, both for you and your little one. That's why we have a special, friendly induction process to help everyone feel at ease.

### Pre-Start Welcome

STEP 1

Before your child starts school, we'll invite you to a welcome meeting where you'll get to meet the teachers, learn all about our school routines, and have a chance to ask any questions. It's also a great time to meet other families who will be starting at the same time.

### Settling In Sessions

STEP 2

We offer gentle, phased sessions to help children settle in. These are short and sweet to start with, and gradually increase as your child gets more comfortable. You'll be able to stay with your child for their first session to make them feel at ease.

### Gradual Independence

STEP 3

As your child settles in, we encourage them to explore and make new friends. Our dedicated staff are always nearby, providing support and encouragement, so they never feel alone. We celebrate all achievements, big or small, and help children build confidence in their new surroundings.

### Regular Communications

STEP 4

We keep in close contact with parents and carers throughout the year. Our teachers send regular updates on how your child is settling in, and there are plenty of opportunities for you to meet with the teacher and discuss your child's progress.



We truly believe that starting school should be a happy and exciting experience for both children and their families. At Stanley Primary School, we create a warm, supportive environment where every child is encouraged to shine and feel proud of who they are.

### **For In-Year Admissions (Children Joining Mid-Year)**

We know that joining a new school partway through the year can be a big change, and we want to make sure that every child who joins us feels just as welcome as those who started at the beginning of the year.

#### **A Personal Welcome**

**STEP 1**

When your child joins us, we make sure they are introduced to their new classmates and show them around the school. They'll meet their new teacher, who will help them find their way and make them feel comfortable in their new environment.

#### **One-to-One Support**

**STEP 2**

We offer extra support to help children who join us during the school year settle in quickly. This could include buddying them up with a friend in the class or having additional sessions to help them catch up on anything they may have missed.

#### **Keeping Parents Informed**

**STEP 3**

As your child settles in, we encourage them to explore and make new friends. Our dedicated staff are always nearby, providing support and encouragement, so they never feel alone. We celebrate all achievements, big or small, and help children build confidence in their new surroundings.

#### **Fostering Friendships**

**STEP 4**

Making new friends is an important part of the school experience, and we encourage all new pupils to take part in activities and events that help them connect with their peers. From group games to school events, we make sure every child feels included and part of our school community.



# Safeguarding

**Stanley Primary School is committed to safeguarding and promoting the welfare of our children. We expect all our staff to share this commitment. Our safeguarding policy in school ensures that there are effective measures in place to safeguard all our children from the risk of potential harm.**

**All members of our school community:**

- Are aware of their responsibilities in relation to safeguarding and child protection
- Know the procedures that should be followed if they have cause for concern
- Know where to find additional information regarding safeguarding
- Are aware of the key indicators relating to child abuse
- Fully support the school's commitment to safeguarding and child protection



# Contact Us



For more information on our school, please contact us via one of the channels below:



01253 761022



[admin@stanley.seteducation.org.uk](mailto:admin@stanley.seteducation.org.uk)

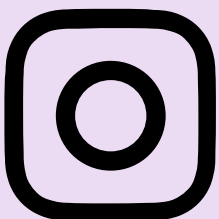


[stanleyprimaryschool.com](http://stanleyprimaryschool.com)

**Don't forget to check out our Social Media pages!**



[Stanley Primary School](#)



[stanleyprimarybpl](#)

