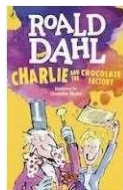
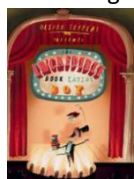


As **Writers**, we will use two new class texts to develop our writing, focusing on:

- 1) The True Story of The Three Little Pigs – Jon Scieszka
- 2) The Incredible Book Eating Boy – Oliver Jeffers

Our **Book Club** will be linked to Charlie & The Chocolate Factory by Roald Dahl. We will use this text to improve our reading, comprehension skills and understanding of a text.



### Class Dahl

### Autumn 1



### Stone Age to Bronze Age

As **Historians** we will be able to answer the question How is the Stone Age Society different to the Iron Age?

We will investigate pre-Roman Britain, look at how the Stone Age grew into the Iron Age and explain what changed and what stayed the same.

As **Geographers** we will begin with our Spatial Sense topic.

This will involve directional language, geographical investigations and investigating different types of settlements.



### **Stone Age-Iron Age Britain**



### Adding and Subtracting Across 10

Addition of three addends can be described by an aggregation story with three parts.

Addition of three addends can be described by an augmentation story with a '*first..., then..., then..., now...*' structure.

The order in which addends (parts) are added or grouped does not change the sum.

When we are adding three numbers, we choose the most efficient order in which to add them, including identifying two addends that make ten (combining).

We can add two numbers which bridge the tens boundary by using a 'make ten' strategy.

We can subtract across the tens boundary by subtracting through ten or subtracting from ten.

In **Life Skills** we will learn about setting ground rules and will agree as a class on the rules we should adhere to in class.

We will learn about staying safe online, how to make good decisions when online and who to ask for help if we are worried.

In **RE** we will study **Creation and Fall**.

This half term we will focus on **the creation stories** taught in Christianity and other world religions. We will also investigate non-religious ideas.

Our **PE lessons** will focus on developing skills in Tag Rugby. This will include passing, movement, invasion game techniques and working as a team.

Please make sure that your child has the correct PE kit and all jewellery has been removed.

**OUR PE DAY IS TUESDAY.**

As **Artists**, we will focus on **shape, textures and patterns**. The children will develop shading skills and drawing techniques to create botanical-inspired drawings and digital drawings. They will work towards the following unit outcomes;

- Recognise how artists use shape in drawing
- Develop shading skills and use them to blend tones
- Use careful observation for adding detail to drawings
- Use line, shape and tone in an imaginative drawing
- Exploring digital media techniques to develop drawings



As **musicians** we will develop our skills on musical notation.

We will learn how to write notes down, where they sit on notation and create our own short musical pieces using notation.

Our musician this half term is Whitney Houston.



### How can I help my child?

- 1) Read with your child **as often as you can**, asking questions such as 'why does the character feel that way? What clue tells you that?'
- 2) Practice times tables **as much as you can**. We need to know our x3 x4 & x8 times tables, Go to [www.topmarks.co.uk/maths-games/daily10](http://www.topmarks.co.uk/maths-games/daily10) to practice daily
- 3) **Learn the weekly spellings** and become familiar with the spelling patterns within the Y3 word lists

### **Don't forget...**

Reading books and records need to be in school everyday.

Spellings will be posted on Dojo each Monday and tested the following Monday in English.

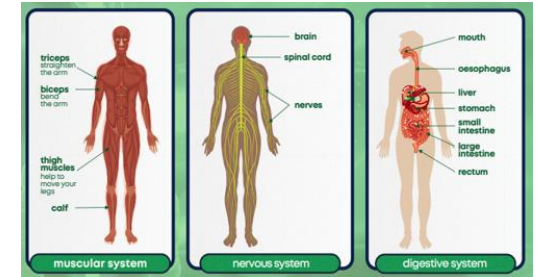
**Thank you**  
**Mr C Barker & Mrs L Arnold**

As **scientists** we will investigate **The Human Body** by:

- Identifying that animals, including humans, need the right types and amount of nutrition, and that they cannot make their own food; they get nutrition from what they eat.
- Identifying that humans and some other animals have skeletons and muscles for support, protection and movement.

The children will study the following parts of the body:

- The Muscular System
- The Skeletal System
- The Nervous System
- Preparing to Eat
- The Digestive System



As **Technology users** we will explore the unit **Connecting Computers**.

We will develop our understanding of digital devices by;

- Focusing on inputs, processes and outputs using digital devices
- Comparing digital devices
- Understand computer networks work
- Become familiar with devices that make up a computer network such as wireless access points, switches and servers
- Discovering the benefits of connecting devices in a network for example for sharing information or moving information between devices

