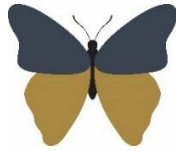


**Welshampton Church of England
Primary School**



**Growing together
in strength, love and wisdom, we shine.**

**Newsletter
Friday 12th June 2026**

Message from the Head

Next week, we are looking forward to welcoming our SIAMS inspector, Kathryn Magiera, to Welshampton as part of our inspection next Wednesday.

A SIAMS inspection provides a valuable opportunity to reflect on and celebrate all that makes our school such a special place. It is a chance to share how our Christian vision and values shape every aspect of school life - from the classroom and collective worship, to the relationships we build and the care we show one another each day.

We are incredibly proud of our school family and all that has been achieved together. This visit will allow us to showcase the many ways in which our children flourish, grow and succeed, supported by a dedicated staff team and a very supportive community. It is always a privilege to talk about the opportunities we provide and the experiences that help our children to truly 'Let Your Light Shine'.

At the heart of everything we do is our shared vision: 'Growing together in strength, love and wisdom, we shine!' This will be evident throughout the inspection day - in our learning, our values, and the confident, kind and respectful children who represent our school so well.

We very much look forward to the day and to celebrating everything that is wonderful about Welshampton.

Federation Zoo and Beach Trip Catering

We are now able to offer pre-made packed lunches for those children who are entitled to Free Schools or those children who would like a school dinner. Keep an eye out for an email early next week for you to complete your order.

Phonics Screening and Multiplication Tables Check
Well done to all of our children who have taken part in the Phonics Screening Check and the Multiplication Tables Check this week. They approached these assessments with focus and determination and we are incredibly proud of the effort they have shown.

These are important statutory assessments which, although the children are still young, play a vital role in developing the key building blocks for future learning.

Strong phonics knowledge underpins reading, helping children become confident, fluent readers, while secure recall of times tables is essential for success across almost all areas of mathematics.

What makes a huge difference is the support children receive at home. Regular practice - reading together, revisiting phonics sounds, and practising multiplication facts - has a huge impact and really helps to build confidence and fluency. The hard work taking place now lays the foundations for everything that follows and makes learning much easier as the children move through the school.

Thank you for your continued support - it truly makes a significant difference.

Healthy School Snacks Reminder

At school, we are always looking for ways to support children's health, wellbeing and readiness for learning. A simple way to help is by encouraging healthy choices for snacks and drinks.

We ask that children bring healthy snacks, such as fruit or other nutritious options, and only water in their bottles. Chocolate and sugary treats should not be brought in, as they can affect concentration and lead to dips in energy.

We would also like to remind families that we are a nut-free school. Due to allergies, no food containing nuts should be brought into school.

These small choices make a big difference - helping children feel their best and ready to learn. Thank you for your support.

Assessment Week

Next week is Assessment Week in school. These assessments are low-stakes and are used as a helpful checkpoint rather than something for children to worry about.

Executive Headteacher: Mr Ben Crompton

Address: Welshampton Church of England Primary School, Welshampton, Shrewsbury SY12 0PG **Telephone:** 01948710325
Twitter: @WelshamptonSch **Email:** admin@welshampton.shropshire.sch.uk **Website:** www.welshamptonceprimary.co.uk

They give both staff and children the opportunity to see just how much progress has been made over time. It is always a chance to celebrate how far the children have come, as well as identify any gaps in understanding so we can target support where it is needed most.

Assessment Week plays an important role in helping us plan the next steps in learning and ensuring every child continues to make good progress. We encourage all children to try their best and approach the week with confidence - it is simply another way of showing what they know and can do.

Photography Club Winner



Rendered in black and white, this photograph immediately takes on a timeless, sculptural quality. The subject's controlled, motionless pose convincingly captures the essence of a statue, while the subtle asymmetry of the arms adds interest and balance, echoing classical forms.

The direct, steady gaze strengthens the illusion, giving the figure a quiet sense of presence. Strong sunlight casts a crisp shadow to the side, almost creating a second "figure" that reinforces the theme.

Set against an everyday playground backdrop, the image cleverly transforms the ordinary into something more artistic. A confident and thoughtful interpretation - and a very deserving winner.

Executive Headteacher: Mr Ben Crompton

Address: Welshampton Church of England Primary School, Welshampton, Shrewsbury SY12 0PG **Telephone:** 01948710325
Twitter: @WelshamptonSch **Email:** admin@welshampton.shropshire.sch.uk **Website:** www.welshamptonceprimary.co.uk



Weekly Attendance Attend Today, Achieve Tomorrow...

Willow Class – 99% ★★★★★
Beech Class - 93% ★★
Oak Class - 93% ★

Average – 95%
School target – 97%



Shining Stars of the Week! Willow Nursery

Elsie for her amazing imagination ideas

Willow Class

Henry for showing strength and wisdom in his literacy this week.

Beech Class

Elara for starting to believe in herself more.

Oak Class

Luke Dar for showing great strength and determination in all his work



Values Awards

as chosen by our values ambassadors

Strength

Mrs Liley for working her socks off to get ready for the inspection next week.

Love

Miss Jones for being so supportive of all the school family and having such a kind heart.

Wisdom

Martha for showing wisdom to herself, others and God always.



Outside Achievements
Huge congratulations to...

Oskar for winning a medal for the 100 m front crawl
and Ethan for his 600m swimming medal

Elsie Stubbs for winning her first 2 medals in
gymnastics competition

And to Koby for gaining white stripe belt in Jiu Jitsu
and football trophy

Have a wonderful weekend!

Kind regards, Mr Crompton

Key School Dates

June

- June 15th Climate Change, Sustainability,
Biodiversity Day – KS2
- June 19th Father's Day Event
8:30am to 9:30am
- June 22nd Welsh Mountain Zoo and Beach Trip
Whole School
- June 26th Sports Day
9:00am – 1:00pm

July

- July 13th Summer Performance
Dress Rehearsal
- July 14th Summer Performance
- July 16th Year 6 Sailing at Whitemere
- July 17th Leavers Service – 9:15am
- July 17th Break Up for Summer



Understanding Your Child
From Toddler to Teen

"I met others going through the same things. It really helped me feel less alone."
"The group boosted my confidence as a parent."

Join our friendly, relaxed group!
Parenting can be full of ups, downs, big feelings and lots of learning — for both you and your child! Come and join us as we chat about what's going on for you and your family. Together we'll make sense of tricky moments and share simple ideas that can make life calmer and more positive.

Upcoming Sessions (once a week over 10 weeks, excl. half terms and bank holidays)

- 21st September 2026 from 9.15 to 11.15am at Brown Clee Primary School, Bridgnorth (WV16 6SS)
- 21st September 2026 from 9.00 to 11.00am at St Giles Primary School, Shrewsbury (SY2 5NL)
- 22nd September 2026 from 12.45pm to 2.45pm at Sandorne Infants School, Shrewsbury (SY1 4QN)
- 23rd September 2026 from 9.15 to 11.15am at Coleham Primary, Shrewsbury (SY3 7EN)
- 23rd September 2026 from 1.15 to 3.15pm at St Laurence Primary School, Ludlow (SY8 1TP)
- 24th September 2026 from 1.00 to 3.00pm at Bishops Castle Primary School (SY9 5PA)
- 25th September 2026 from 12.30 to 2.30pm Online via MS Teams

What We'll Talk About

- Communicating and building connection with your child
- Routines like sleep and bedtime and any other routines you have as a family
- Understanding behaviour and big emotions
- Child development and how you can support it

Want to Join Us?
Email: parenting.team@shropshire.gov.uk
Call: 01743 250950
Visit: [The Parenting Team | Shropshire Council](#)

Prefer flexible online learning?
Try our free online learning pathways at
[Becoming Together - Togetherness](#)




Understanding Your Child with SEND
From Toddler to Teen

"I met others going through the same things. It really helped me feel less alone."
"The group boosted my confidence as a parent."

Join our friendly, relaxed group!
Join our friendly, free group for parents and carers of children with SEND. Connect with others, deepen your understanding of your child, and explore what's going well and what you'd like to change. Small changes make big differences!

Upcoming Sessions (once a week over 10 weeks, excl. half terms and bank holidays)

- 22nd September 2026 from 5.00 to 7.00pm Online via MS Teams
- 25th September 2026 from 9.30 to 11.30am Online via MS Teams

SEND groups are for parents/carers of children who may have special educational needs or disabilities. No formal diagnosis is needed.

What We'll Talk About

- Communication and building confidence in your relationship with your child
- Exploring routines such as sleep and bedtime
- Understanding behaviour and emotional regulation
- Child development and ways you can support it

Want to Join Us?
Email: parenting.team@shropshire.gov.uk
Call: 01743 250950
Visit: [The Parenting Team | Shropshire Council](#)

Prefer flexible online learning?
Try our free online learning pathways at
[Becoming Together - Togetherness](#)




Executive Headteacher: Mr Ben Crompton

Address: Welshampton Church of England Primary School, Welshampton, Shrewsbury SY12 0PG **Telephone:** 01948710325
Twitter: @WelshamptonSch **Email:** admin@welshampton.shropshire.sch.uk **Website:** www.welshamptonceprimary.co.uk