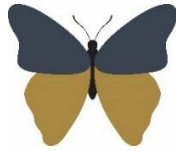


**Welshampton Church of England  
Primary School**



**Growing together  
in strength, love and wisdom, we shine.**

**Newsletter  
Friday 1<sup>st</sup> May 2026**

---

**Message from the Head**

As we come to the end of another busy and rewarding week, I'd like to wish all our families a very happy long weekend. With Bank Holiday Monday ahead, we hope everyone is able to enjoy a well-earned rest and some quality time together. We'll see you on Tuesday!

We're already looking forward to what promises to be a very special day next Friday, when the whole school will take part in a Forest School Day to celebrate Sir David Attenborough's 100th birthday.

The day will be a wonderful opportunity for children to immerse themselves in nature, build teamwork skills and reflect on the importance of caring for our planet – values that sit at the very heart of his life's work.

**Welsh Mountain Zoo and Beach Trip**

We are delighted to be organising a trip to the Welsh Mountain Zoo in Colwyn Bay, followed by a fun-filled afternoon on the beach at Rhos on Sea.

The trip will take place on Monday 22nd June, with departure at 9.00am and a return to school by approximately 5.00pm. To support transport and entry costs, we are asking for a voluntary contribution of £15 per child. Children will need to bring a packed lunch, snacks and plenty to drink, with further details to follow closer to the date.



**Cross Country**

Our final KS2 Cross Country event will take place on Thursday, May 7th, 2026 at Marches School.

This event offers students the opportunity to represent the school in a competitive setting.

Participants should arrive at the field between 3:30pm and 3:45pm, with students able to leave school at 3:00pm to allow sufficient travel time.

If your child would like to take part, please inform Miss Kerr or Mrs Liley by Tuesday, May 5th. Should you have any questions, please feel free to contact us for further information.

**Photography Club**



This week's superstar winner is Poppy Darbey!

In this finely observed photograph, Poppy transforms an everyday surface into something quietly monumental. The repeating angular forms march rhythmically across the frame, creating a visual pulse that feels both industrial and sculptural. Each segment, identical yet subtly distinct, invites the viewer to linger – to notice the scuffs, the surface wear, the small intrusions of leaf fragments caught between grooves.

The tight framing is particularly effective. By denying wider context, Poppy encourages us to engage purely with form, texture and repetition. Light skims across the raised edges, carving out shadows that deepen the sense of depth and structure, while the muted palette keeps the composition grounded and cohesive.

What elevates this photograph is its restraint. There is no attempt to embellish or dramatise – instead, beauty is found through careful looking. It is a confident piece that demonstrates an emerging understanding of how pattern, when seen closely enough, can become both abstract and expressive.

**Executive Headteacher:** Mr Ben Crompton

**Address:** Welshampton Church of England Primary School, Welshampton, Shrewsbury SY12 0PG **Telephone:** 01948710325  
**Twitter:** @WelshamptonSch **Email:** admin@welshampton.shropshire.sch.uk **Website:** [www.welshamptonceprimary.co.uk](http://www.welshamptonceprimary.co.uk)

### Nursery Donation Request

Our Nursery area now has a lovely new bark area, and it is already proving very popular. We have some very keen builders and farmers who are eager to get to work, and we were wondering if anyone has any old toy construction vehicles or tractors they would kindly like to donate to Nursery. Any contributions would be very gratefully received.

### Volunteers to Listen to Readers

To help further support children with their reading, we would welcome volunteers who are able to come into school to listen to children read. If you are interested, please email me and we will be in touch to see how we can make this work.

### Reading Journal Reminder

Please can Home School Journals be brought into school every day please. It makes the administration of homework etc so much easier when all children have their journals with them.



### Weekly Attendance

**Attend Today, Achieve Tomorrow...**

Willow Class – 99% ★★★★★

Beech Class - 96% ★★

Oak Class - 99% ★★★★★

Average – 98%

School target – 97%



### Shining Stars of The Week!

#### Willow Class Nursery

Poppy R for being a great friend.

#### Willow Class

Mabel for her writing and showing great enthusiasm with money!

#### Beech Class

Koby for working exceptionally hard.

#### Oak Class

Freddie for his 100% efforts in SATs Bootcamp!



### Values Awards

*As chosen by our Values Ambassadors*

#### Strength

Ethan for showing strength of character when learning about time.

#### Love

Emily B for being a really kind friend.

#### Wisdom

Tom for always being wise in everything he does.



### Outside Achievements

Elsie S for gaining her gymnastics badge.

Ethan for being awarded his 400m badge.

Maisie for achieving her gymnastics certificate.

Congratulations all!

Have a wonderful - long - weekend!

Kind regards,  
Mr Crompton

### Key School Dates

#### May

May 4<sup>th</sup>

Bank Holiday

May 8<sup>th</sup>

David Attenborough's 100<sup>th</sup> Birthday

Whole School Forest School Day

May 11<sup>th</sup> – 14<sup>th</sup>

KS2 SATs Week

#### June

June 8<sup>th</sup> – 12<sup>th</sup>

Year 1 Phonics Assessment Week

June 8<sup>th</sup> – 12<sup>th</sup>

Year 4 Multiplication Check Week

June 19<sup>th</sup>

Father's Day Event

June 26<sup>th</sup>

Sports Day – 9:00am

#### July

July 14<sup>th</sup>

Summer Performance

July 17<sup>th</sup>

Leavers Service – 9:15am

July 17<sup>th</sup>

Break Up for Summer

**Executive Headteacher:** Mr Ben Crompton

**Address:** Welshampton Church of England Primary School, Welshampton, Shrewsbury SY12 0PG **Telephone:** 01948710325

**Twitter:** @WelshamptonSch **Email:** admin@welshampton.shropshire.sch.uk **Website:** [www.welshamptonceprimary.co.uk](http://www.welshamptonceprimary.co.uk)

# Calm & Curious

## STAY & PLAY

A gentle, relaxed playgroup for babies & preschoolers.

- ★ Calm play environment
- 🧸 Thoughtfully chosen toys
- 📖 Optional stories & songs
- ✂️ Simple craft activity

5 MINS  
FROM  
ELLESMERE &  
WHITCHURCH

NEW VENUE  
**Bettisfield Village Hall**  
Bettisfield, SY12 0AP

📅 TRIAL SESSIONS  
Friday 1st May  
Friday 8th May  
Friday 15th May

🕒 10:00 – 11:15am  
(1 hour 15 minutes)

**£3 per child**  
(4-week trial)

Limited spaces – I'm keeping numbers small  
(8–12 families) to keep it calm,  
so booking is recommended!

To book:  
calmandcurious2026@outlook.com

Welcome to

# 45 YEARS OF MARBURY MERRY DAYS

In aid of St. Michael & All Angels Church

Saturday 9th and Sunday 10th May 2026  
Gates open 12.30pm

A traditional Country Fair

**MAIN ATTRACTION**  
**THE SEALED KNOT**  
Living history camp  
Saturday - Skirmishes and loud cannon and musket fire. Sunday - Children's army, marching and skirmish displays

**AND PINXTON PUPPETS**

**PLUS** Grand Draw, Plant Stall, Sweet Stall & Cake Stall, Tombola, Craft and Gift Fair, Bric-a-Brac & Book Stalls, Side Shows & Refreshments

- Old-fashioned Toyshop (Saturday)
- Morris Dancing (Saturday)
- Maypole Dancing (Saturday)
- World Pipe Band
- Pre-sawed Clotting & Hardware
- Dog Show (Sunday) Entry on Friday
- Chopshire Farm: Ice Cream
- Children's Activity Area
- Bouncy Castles
- Model Flying Display
- Floral Display in the Church
- Trade Stalls
- Classic Cars & Vintage Tractors
- Cynegiles Bar
- Free Antiques Valuations (Sundays)

**FREE Car Park - Adults £7.50 Under 16s £1 (free if with an adult)**

Enquiries: 01948 663087 / 07778 604470  
www.marburymerrydays.org  
Marbury (SY13 4LN) is 3 miles north-east of Whitchurch

Play Cricket! Make Friends!

**FRANKTON CRICKET CLUB**

# CRICKET FOR BOYS & GIRLS

**Aged 5 to 16**  
Starts Thursday 7th May  
6:30 - 8:00pm  
Hardwick Park, SY12 9HG

**ALL STARS CRICKET**

Fun Games | Mini Matches

**Everyone Welcome!**

Wem Tennis Club

# YOU'RE INVITED!

# TENNIS TASTER SESSIONS

Turn up to try:  
Cardio Tennis  
Walking Tennis  
Tennis  
Pickleball

**Sunday May 3rd, 2026**  
10:00am - 12:00 pm

Wem Tennis Club  
Recreation Ground  
SY4 5DA

**We'd love to see you on court!**

**Executive Headteacher:** Mr Ben Crompton

**Address:** Welshampton Church of England Primary School, Welshampton, Shrewsbury SY12 0PG **Telephone:** 01948710325

**Twitter:** @WelshamptonSch **Email:** admin@welshampton.shropshire.sch.uk **Website:** [www.welshamptonceprimary.co.uk](http://www.welshamptonceprimary.co.uk)

## Minecraft Child Safety Settings

Minecraft itself doesn't have a big built-in "parental control" menu but depending on how your child plays (Java Edition, Bedrock/Windows, or console), you can manage what they can do through a mix of Microsoft account family settings, platform parental controls, and server/world settings.

### Bedrock Edition (Windows, iOS, Android, Xbox, PlayStation, Switch)

- **Microsoft Family Safety**
  - Log into your child's Microsoft account via [family.microsoft.com](https://family.microsoft.com).
  - You can set:
    - Screen time limits.
    - Spending limits (requires adult approval for purchases).
    - Restrictions on joining multiplayer/Realms.
    - Restrictions on adding friends.
- **Xbox/Console Parental Controls**
  - Each console (Xbox, PlayStation, Switch) has its own parental settings that allow you to:
    - Restrict online play.
    - Control voice/text chat.
    - Block joining servers or Realms.
    - Limit age-rated content.

### Java Edition (PC/Mac)

Java doesn't have built-in parental settings, so you'll need to manage through:

- **Server settings:** If your child plays on your own hosted server, you can whitelist who's allowed to join, disable chat, or use plugins/mods to filter messages.
- **Launcher account:** Java Edition is tied to a Microsoft account now, so you can still apply Microsoft Family Safety rules (e.g. screen time, purchase approval).
- **Chat reporting:** Mojang added reporting and chat filters—strong language and personal info can be filtered automatically if enabled in account settings.

### General Safety Options

- **Mute Chat / Toggle Chat** (both editions): You can turn chat off in settings to stop interaction with strangers.
- **Realms vs Servers:** Realms are invite-only (safer). Public servers often have less control over content and players.
- **Resource Packs / Add-ons:** Keep an eye on downloads; use only trusted sources (Marketplace or well-known modding sites).
- **Play Together Locally:** On consoles or LAN, kids can play with just friends/family without internet strangers.

## ROBLOX Child Safety Settings

To set up parental controls on Roblox and ensure your child has a safe and age-appropriate experience, follow these steps:

### Step 1: Link Your Parent Account

1. Log into your child's Roblox account (Has to be a child's D.O.B).
2. Navigate to **Settings** (gear icon).
3. Select **Parental Controls**.
4. Click **Add Parent Account**.
5. Follow the prompts to create or link your parent account.

### Step 2: Set Up Parental Controls

Once your parent account is linked, you can manage various settings:

#### 1. Communication Settings

- Go to **Parental Controls > Communication**.
- Adjust who can chat with your child in experiences and via direct messages. Options include:
  - **Everyone**
  - **Friends**
  - **No one**
- For users under 13, default settings are more restrictive.

#### 2. Content Restrictions

- Navigate to **Parental Controls > Content Restrictions**.
- Set the **Content Maturity** level appropriate for your child:
  - **Minimal**
  - **Mild**
  - **Moderate**
  - **Restricted**
- You can also block specific experiences by adding them to the **Blocked Experiences** list.

#### 3. Friends Management

- In **Parental Controls**, scroll to **Friends** and select **Manage**.
- View your child's friends list, and block or report users as necessary.

#### 4. Spending Controls

- Under **Parental Controls**, go to **Spending Restrictions**.
- Set a monthly spending limit for Robux and subscriptions.
- Choose to receive notifications for every transaction or only for high spending thresholds.

#### 5. Screen Time Management

- Access **Parental Controls > Screen Time**.
- Set daily time limits for your child's Roblox usage.
- View the top 20 experiences your child has played in the past week.

**Executive Headteacher:** Mr Ben Crompton

**Address:** Welshampton Church of England Primary School, Welshampton, Shrewsbury SY12 0PG **Telephone:** 01948710325  
**Twitter:** @WelshamptonSch **Email:** [admin@welshampton.shropshire.sch.uk](mailto:admin@welshampton.shropshire.sch.uk) **Website:** [www.welshamptonceprimary.co.uk](http://www.welshamptonceprimary.co.uk)

**Executive Headteacher:** Mr Ben Crompton

**Address:** Welshampton Church of England Primary School, Welshampton, Shrewsbury SY12 0PG    **Telephone:** 01948710325  
**Twitter:** @WelshamptonSch    **Email:** admin@welshampton.shropshire.sch.uk    **Website:** [www.welshamptonceprimary.co.uk](http://www.welshamptonceprimary.co.uk)