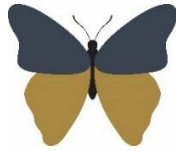


**Welshampton Church of England  
Primary School**



**Growing together  
in strength, love and wisdom, we shine.**

**Newsletter  
Friday 17<sup>th</sup> April 2026**

---

**Message from the Head**

Welcome back after the Easter break. We hope you all enjoyed a restful holiday and some precious family time. It has been lovely to see the children settle back into school so positively, full of energy and enthusiasm for learning.

The summer term is always a busy and exciting one, with plenty of opportunities for enrichment, events and progress. We are very much looking forward to the weeks ahead and to continuing to work in partnership with you to support your children as they grow, learn and thrive.

**Parents' Evening Reminder**

Parents' Evening appointments have been sent out for next Monday and Thursday. We have done our very best to allocate appointments as close as possible to parents' requested times. If your slot is inconvenient, please let us know and we will try to rearrange where possible.

Appointments are 10 minutes long and largely back-to-back, so teachers do need to keep strictly to time to allow the evening to run smoothly for everyone. If you feel that you would benefit from a longer discussion, please contact the class teacher later in the week to arrange a follow-up meeting.

**Year 6 London Trip**

Our Year 6 children enjoyed a truly wonderful trip to London this week. Highlights included visits to the Houses of Parliament, Westminster Abbey, Buckingham Palace, Trafalgar Square, a spectacular Lion King performance in the West End and a well-earned meal at Pizza Express.

The journey was an adventure in itself, with travel by train and Underground – and an impressive 7 miles of

walking in one very long but rewarding day. The experience offered a real contrast to life in rural Shropshire and will undoubtedly stay with the children for years to come.

We were also incredibly fortunate to meet and spend time with MP Helen Morgan, which added an extra layer of sparkle to the day. A huge thank you to the staff who gave their own time, away from their families, to make this trip possible. You were brilliant – now it's time for some sleep!

The video of the day is for all to see on Class Dojo.

**Homework, TTRS & Reading Journals**

We would like to reiterate the importance of working together, school and home, to support children's learning. Regular daily reading, times table practice using Times Table Rockstars and completion of set homework all make a significant difference to children's confidence and progress in school.

While homework isn't compulsory, children benefit greatly from encouragement – it truly does make a difference.

**School Works**

Over the Easter Break Mr Reincke has been very busy developing our outdoor shelter to make it more purposeful for the children and general use. This project has been supported by and paid for by the Welshampton Friends – so a huge thank you to all for your fundraising efforts.



Even more exciting developments which are currently being planned for so watch this space – more to follow soon!

**Executive Headteacher:** Mr Ben Crompton

**Address:** Welshampton Church of England Primary School, Welshampton, Shrewsbury SY12 0PG **Telephone:** 01948710325  
**Twitter:** @WelshamptonSch **Email:** admin@welshampton.shropshire.sch.uk **Website:** [www.welshamptonceprimary.co.uk](http://www.welshamptonceprimary.co.uk)

## Field Spring Clean – Tomorrow!

# SCHOOL FIELD SPRING CLEAN UP

Saturday 18<sup>th</sup> April 2pm to 4pm

Please join us on the school field to tidy ready for Spring and Summer  
e.g. raking leaves and twigs, trimming hedges, weeding etc



### What to bring:

- Tools
- Comfortable clothes
- Water
- Friends and family!

- Tools to bring (if you can)
- Brooms
- Rakes
- Shovels and spades
- Loppers/shears
- Gardening gloves
- Strimmer
- Chain Saw
- Leaf Blower
- Wheel barrow
- Any other useful items!

### We'll provide:

- Biscuits and cakes

## Holidays in Term Time

We would like to remind parents that holidays taken during term time cannot be authorised, except in **very** exceptional circumstances. The school is required to follow the regulations set out by the local authority and we do not have discretion to approve absence for family holidays.

Unauthorised absences are automatically referred to the Local Authority Welfare Officer and can result in fixed penalty fines, in line with current guidance. These decisions are overseen by the local authority that we are obliged to follow.

We kindly ask parents to take this into account when planning holidays and to support good attendance, which plays a vital role in children's progress, confidence and wellbeing.

## Outstanding School Debts

Please can parents make sure all outstanding dinner and club debts are paid in full please.

Payment can be made online at: [Eduspot.co.uk/schoolmoney](http://Eduspot.co.uk/schoolmoney) or we can take card payments over the telephone or in person.

## Summer Performance – New Date

Please note that we have had to change the date of our summer performance. The new date will be Tuesday 14 July. This change is due to Lakelands Induction Day taking place on 7 July, which was our originally planned date.



## Weekly Attendance

Attend Today, Achieve Tomorrow...

Willow Class – 96% ★

Beech Class - 99% ★★ ★

Oak Class - 99% ★★

Average – 98%

School target – 97%



## Shining Stars of The Week!

### Willow Nursery

Roman for showing great strength in joining  
Welshampton

### Willow Class

Isabella for showing love during her first week at  
Welshampton.

### Beech Class

Lily for settling in amazingly on her first week at  
Welshampton.

### Oak Class

Connie for her amazing artwork this week.

**Executive Headteacher:** Mr Ben Crompton

**Address:** Welshampton Church of England Primary School, Welshampton, Shrewsbury SY12 0PG **Telephone:** 01948710325

**Twitter:** @WelshamptonSch **Email:** [admin@welshampton.shropshire.sch.uk](mailto:admin@welshampton.shropshire.sch.uk) **Website:** [www.welshamptonceprimary.co.uk](http://www.welshamptonceprimary.co.uk)



### Values Awards

As chosen by our Values Ambassadors

#### Strength

Michael for showing great friendship

#### Love & Wisdom

All our Year 6s for the London Trip



#### Outside Achievements

Kiera for joining Telford BMX Club – exciting times!

Have a wonderful weekend!

Kind regards,  
Mr Crompton

### Key School Dates

<b>April</b>	
April 18 <sup>th</sup>	School Field Tidy 2pm – 4pm
<b>May</b>	
May 11 <sup>th</sup> – 14 <sup>th</sup>	KS2 SATs Week
<b>June</b>	
June 8 <sup>th</sup> – 12 <sup>th</sup>	Year 1 Phonics Assessment Week
June 8 <sup>th</sup> – 12 <sup>th</sup>	Year 4 Multiplication Check Week
June 19 <sup>th</sup>	Father's Day Event
June 26 <sup>th</sup>	Sports Day – 9:00am
<b>July</b>	
July 14 <sup>th</sup>	Summer Performance
July 17 <sup>th</sup>	Leavers Service – 9:15am
July 17 <sup>th</sup>	Break Up for Summer

**JUNIOR Training 2026**

BRIDGEWATER Construction Ltd

**ALL STARS CRICKET**  
5-8 YEARS OLD  
FROM FRIDAY 15TH MAY

- 18:15 - 19:15
- FREE T-SHIRT, BAT & BAG
- REGISTER ONLINE

**9 - 16 YEARS OLD FROM FRIDAY 24TH APRIL**

- 18:30 - 20:00
- CRICKET PRACTICE FOR BOYS & GIRLS
- ECB QUALIFIED COACHES
- CHANCE TO LEARN CRICKET & PLAY FOR A TEAM
- REGISTRATION EVENING 10TH APRIL

ALL STARS CRICKET

## Understanding Your Child

0 – 5 years

"I met others going through the same things. It really helped me feel less alone."

"The group boosted my confidence as a parent."

### Join our friendly, relaxed group!

Parenting can be full of ups, downs, big feelings and lots of learning — for both you and your child! Come and join us as we chat about what's going on for you and your family. Together we'll make sense of tricky moments and share simple ideas that can make life calmer and more positive.

### Upcoming Session

- starts Tuesday 5<sup>th</sup> May, 12.30-2.30pm – Sunflower House, Shrewsbury, SY1 4ES

the group meets once a week over 10 weeks, excl. half terms and bank holidays with the last session being on Tuesday 14<sup>th</sup> July 2026.

### What We'll Talk About

- Communicating and building connection with your child
- Routines like sleep and bedtime and any other routines you have as a family
- Understanding behaviour and big emotions
- Child development and how you can support it

### Want to Join Us?

Email: [parenting.team@shropshire.gov.uk](mailto:parenting.team@shropshire.gov.uk)

Call: 01743 250950

Visit: [The Parenting Team | Shropshire Council](#)



### Prefer flexible online learning?

Try our free online learning pathways at

[Becoming Togetherness - Togetherness](#)



**Executive Headteacher:** Mr Ben Crompton

**Address:** Welshampton Church of England Primary School, Welshampton, Shrewsbury SY12 0PG **Telephone:** 01948710325  
**Twitter:** @WelshamptonSch **Email:** [admin@welshampton.shropshire.sch.uk](mailto:admin@welshampton.shropshire.sch.uk) **Website:** [www.welshamptonceprimary.co.uk](http://www.welshamptonceprimary.co.uk)