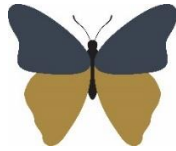


**Welshampton Church of England  
Primary School**



**Growing together  
in strength, love and wisdom, we shine.**

**Newsletter  
Friday 23<sup>rd</sup> January 2026**

---

**Message from the Head**

It has been another busy week in school, with a couple of particular highlights.

As part of the Year 3 and 4 Science topic on 'Sound', we were pleased to welcome Felicity and Bradley's mum into school to demonstrate the harp and talk to the children about how it works. This practical link to their learning provided a valuable opportunity for pupils to see and hear an instrument that many had not encountered before.

Children from across the school listened with great interest as she played and also sang along to a number of well-known pop songs. It was clear that they were keen to understand more about how the vibrations of the strings create different pitches. The session prompted thoughtful questions and supported our ongoing work on how sound is produced and travels. It was a memorable and informative experience that enriched the topic in a meaningful way.

We would also like to thank Mr Jackson for taking the afternoon off work to transport the harp to school. His help made the session possible, and we are grateful for the support and once again show how fortunate we are to have such a supportive parent body.



**Happy Burns Night**

Today, the children had the opportunity to try a range of traditional Scottish foods as part of our learning about Burns Night. This annual celebration, held on 25 January, marks the life and work of Scotland's national poet, Robert Burns. Across Scotland, people recognise the occasion with poetry readings, music, and the well-known Burns Night meal, which traditionally includes haggis.

Sampling foods from different parts of the United Kingdom helps broaden the children's understanding of the country's varied cultures and traditions. Although we share a national identity, each nation within the UK has its own history, customs, and flavours, and it's valuable for pupils to experience these first-hand.

The children approached the tasting with interest and a willingness to give things a go, and it provided a useful starting point for discussions about cultural heritage and regional identity.



**Executive Headteacher:** Mr Ben Crompton

**Address:** Welshampton Church of England Primary School, Welshampton, Shrewsbury SY12 0PG **Telephone:** 01948710325  
**Twitter:** @WelshamptonSch **Email:** admin@welshampton.shropshire.sch.uk **Website:** [www.welshamptonceprimary.co.uk](http://www.welshamptonceprimary.co.uk)

### Information Reminder

This is a reminder to always ensure that the school has up to date records for the children therefore please complete the online surveys about your child as soon as possible. These include important questions about local visit permissions, food allergies, and any specific medical or dietary needs.

Having this information is essential. It means that when class teachers plan activities – for example, taste-testing in science – we can ensure that every child is safe to take part. If we do not have up-to-date information, your child may not be able to participate for safety reasons.



### Weekly Attendance Attend Today, Achieve Tomorrow...

Willow Class – 99% ★★★★★

Beech Class - 98% ★★★★★

Oak Class - 98% ★★★★★

Average – 98%

School target – 97%

Well done all!



### Shining Stars of The Week!

#### Willow Nursery

Reid for showing Love towards his writing skills

#### Willow Class

Emily P for showing strength in his independence during swimming

#### Beech Class

Zac B for showing great love, strength in his amazing first paragraph

#### Oak Class

Oskar for his amazing effort whilst learning about long division



### Values Awards

#### Strength, Love & Wisdom

Jessica for showing all three of our values



#### Outside Achievements

Meghan for gaining her Level 3 & 4 in gymnastics

Ava for gaining her Level 10 & 11 in gymnastics

Henry for achieving his 400 metres in swimming

Adam for being named "Tackler of the day" in Rugby



#### Headteacher's Award

Tate for sharing such wonderful writing to school visitors.

Have a wonderful weekend!

Kind regards,  
Mr Crompton

### Key School Dates

#### February

February 13<sup>th</sup> Break Up for Half Term  
February 23<sup>rd</sup> Return to School

#### March

March 27<sup>th</sup> Easter Service – 9:15am  
March 27<sup>th</sup> Break Up for Easter Holiday

#### April

April 13<sup>th</sup> Return to School

**Executive Headteacher:** Mr Ben Crompton

**Address:** Welshampton Church of England Primary School, Welshampton, Shrewsbury SY12 0PG **Telephone:** 01948710325  
**Twitter:** @WelshamptonSch **Email:** admin@welshampton.shropshire.sch.uk **Website:** [www.welshamptonceprimary.co.uk](http://www.welshamptonceprimary.co.uk)