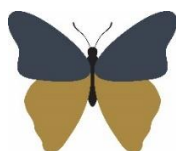


**Welshampton Church of England
Primary School**



**Growing together
in strength, love and wisdom, we shine.**

**Newsletter
Friday 9th January 2026**

Message from the Head



It's been an eventful start to the term! After First Aid training for most of our staff on Monday, we kicked off the Spring Term with a fantastic visit from the iRock team on Tuesday.

Yesterday, we enjoyed a trip to the pantomime - before the snow brought an early end to our first week back!

Thank you for your understanding regarding today's school closure. Deciding to close is never easy and is always a decision we take very seriously. Wherever it is safe to do so, we will keep school open. Unfortunately, that wasn't possible today due to the local snowfall and the challenging conditions faced by staff travelling from further afield.

Pantomime Joy

A huge thank you to the Friends for subsidising our pantomime trip. The children had a wonderful time, with the highlight undoubtedly being Mr Tinsley's surprise guest appearance on stage - and his blossoming relationship with Hetty!

Well done, Mr Tinsley! You took it all in great spirits, and it's something the children – and sadly staff - will remember for a long time.



Executive Headteacher: Mr Ben Crompton

Address: Welshampton Church of England Primary School, Welshampton, Shrewsbury SY12 0PG **Telephone:** 01948710325
Twitter: @WelshamptonSch **Email:** admin@welshampton.shropshire.sch.uk **Website:** www.welshamptonceprimary.co.uk

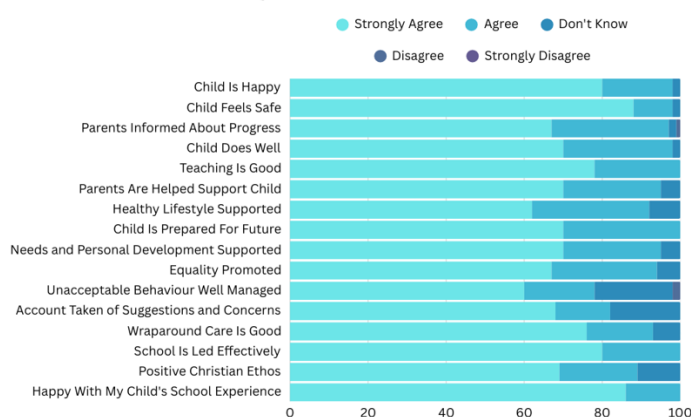
Parent Questionnaire Results

Thank you to everyone who completed the Parent Questionnaire circulated before the Christmas break.

We are delighted to share that the feedback was overwhelmingly positive - your support and kind words are warmly appreciated. A strong partnership between school and parents truly makes a difference to children's education.

Naturally, there were some areas identified for improvement, and we are committed to working on these as we move forward. Please remember that we are always open to feedback - both positive and constructive – as we strive to further enhance the education and experience of your children.

Parent Questionnaire December 2025



Reception Starters 2026

The deadline is approaching for school starters 2026. If you know of anyone who is looking for a first – or new – school, please encourage them to get in touch and we will be more than happy to show them around.

Have a wonderful weekend!

Yours sincerely,
Mr Crompton.

Key School Dates

February

February 13th Break Up for Half Term
February 23rd Return to School

March

March 27th Easter Service – 9:15am
March 27th Break Up for Easter Holiday

April

April 13th Return to School

junior parkrun

Free, weekly, 2k for 4-14 year olds

walk, skip, run, volunteer, spectate - it's up to you!

We are looking for a group of volunteers to help bring junior parkrun to

Jubilee Park, Whitchurch

Interested in being involved?

We'd love to hear from you, send an email to:
sally.mcdonald@parkrun.com

