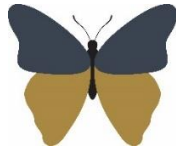


**Welshampton Church of England
Primary School**



**Growing together
in strength, love and wisdom, we shine.**

**Newsletter
Friday 5th December 2025**

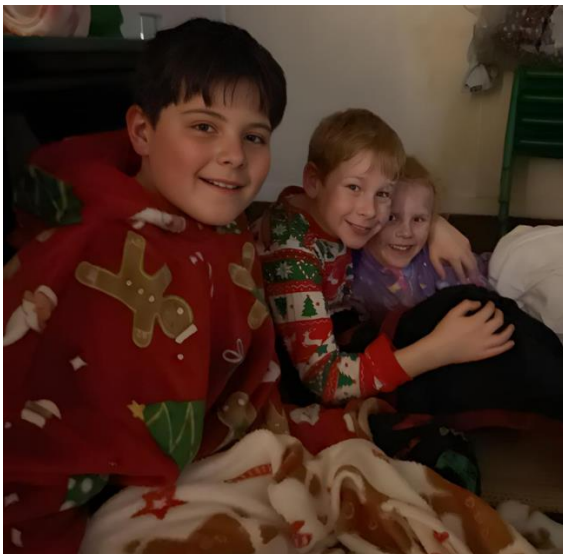
Message from the Head

This week we gave families an early Christmas treat by keeping doors open until 7:30pm. Hopefully parents were able to enjoy some well-deserved child-free time for Christmas preparations, whilst the children were having an evening of festive fun!

Pupils arrived in their pyjamas ready for a cosy night of Christmas films, hot chocolate, and hot dogs. However, the highlight was the outdoor exploration... in the dark!

It was a night filled with laughter, excitement, and magical memories for the children, while giving you a chance to tick a few things you're your festive to-do list.

Special thanks go to all those staff who helped set up and for voluntarily spending their evening with the children. I think this will become an annual event...



Executive Headteacher: Mr Ben Crompton

Address: Welshampton Church of England Primary School, Welshampton, Shrewsbury SY12 0PG **Telephone:** 01948710325
Twitter: @WelshamptonSch **Email:** admin@welshampton.shropshire.sch.uk **Website:** www.welshamptonceprimary.co.uk



Christmas at Welshampton

**8th December - Carols Around the Christmas Tree
2:45pm**

Parents, carers, grandparents, and siblings are warm invited to celebrate at our Christmas themed Whole School Forest School Day.

Sing along to your favourite carols around the tree, enjoy a cup of hot chocolate, toast a marshmallow over the fire and we may even have a little mulled wine and a mince pie to keep you warm!

10th December - Non-Stop Christmas Party

We're very excited to be hosting a Non-Stop Christmas Party at Welshampton Parish Hall following our school Christmas dinner.

As we have the hall booked for the whole day, we'll begin with a Festive Talent Show in the morning, followed by Christmas crafts, and then the party in the afternoon.

16th December – Christmas Nativity – 5:30pm

Join us in the church for this year's Nativity performance

19th December – End of Term Service – 9:15am

The whole school will join together as we end the term in church with our traditional Christmas Service – a second showing of the Nativity performance.

Super Swimmers

On Wednesday of this week, we travelled down to Oswestry School to compete in the annual swimming gala. The children did brilliantly and competed against 6 other schools in a variety of races and individual events before returning after school.

Well done to all the children who competed with such teamwork, spirit and determination. You were great and wonderfully behaved!

Panto Price Confirmed

Huge thanks to the Friends for buying all the children's tickets to go to the pantomime! This has enabled us to reduce the price of the trip to £10 per pupil our annual trip which, this year, is happening in January... oh yes it is!

We look forward to this trip every year and the children absolutely love it – and now they get to go at a reduced cost to parents. Thank you all for your support.

Friends of Welshampton Update

Thank you to all those parents who attended the meeting earlier this week both in person and online. The Friends play a very important role at school and it is wonderful to hear the meeting was so well attended.

During the meeting, Sophie Mainwaring has stepped down from her role as Chair and in her place has stepped up Catherine Norejko. Congratulations Mrs Norejko!

But it is a big thank you to Sophie for all the tireless work and leadership she has shown over previous years as Chair. Those efforts have lead the Friends to raise significant amounts of money for the children and is very much appreciated. Thank you.

Please find attached Minutes from the meeting which include the next meeting date: Tuesday 13th January at the Sun Inn or virtually.



Weekly Attendance

Attend Today, Achieve Tomorrow...

Willow - 100% ★★★★★

Beech - 99% ★★★★★

Oak - 100% ★★★★★

Weekly average: 98.1%

So close to the full house! Well done all!

Whilst we have had excellent attendance this week at Welshampton, over at Newtown illness has swept through the school with attendance figures lower than at any point in the last 4 years – 81% - a pattern which seems to have been repeated around the country, so we want to avoid that here if possible.

Please be advised that the School Aged Immunisation Service is in Shrewsbury on Saturday with more details below.



Reception to
Year 11 children
(inclusive)

Coral House
Longbow Close
Harlescote Lane
Shrewsbury
SY1 3GZ

[Saturday 6 December](#)
[1pm – 4pm](#)

Telephone 01743 450855
for more details



Shining Stars of The Week!

Willow Class

Arthur, Emily P and Maisie for showing strength and wisdom during their assessments this week.

Beech Class

Mila for working so hard and showing great strength, love and wisdom during her assessments.

Oak Class

All of Oak Class for their amazing strength and determination showed in their tests.



Values Awards

*as chosen by our values ambassadors
Luke P, Connie and Matha.*

Strength

Ivy for her brilliant 7x table work.

Love

Bradley for her love and singing and passion for phonics.

Wisdom

Emma for being so kind on the playground and showing her wisdom.

Have a wonderful weekend!

Kind regards,
Mr Ben Crompton.

Executive Headteacher: Mr Ben Crompton

Address: Welshampton Church of England Primary School, Welshampton, Shrewsbury SY12 0PG **Telephone:** 01948710325
Twitter: @WelshamptonSch **Email:** admin@welshampton.shropshire.sch.uk **Website:** www.welshamptonceprimary.co.uk

Key School Dates

December

8th December	Carols Around Christmas Tree 2:45pm
10 th December	Christmas Jumper Day
16 th December	Christmas Nativity 5:30pm
19 th December	End of Term Service 9:15am

January

8 th January	Cinderella Pantomime
-------------------------	----------------------

Executive Headteacher: Mr Ben Crompton

Address: Welshampton Church of England Primary School, Welshampton, Shrewsbury SY12 0PG **Telephone:** 01948710325
Twitter: @WelshamptonSch **Email:** admin@welshampton.shropshire.sch.uk **Website:** www.welshamptonceprimary.co.uk