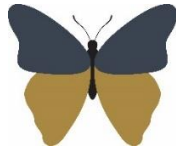


**Welshampton Church of England  
Primary School**



**Growing together  
in strength, love and wisdom, we shine.**

**Newsletter  
Friday 28<sup>th</sup> November 2025**

---

**Message from the Head**

Monday marks the first day of December and as such we are all gearing up to the Festive period!

This began in earnest this week when our Prime Minister, Deputy Prime Minister and Reception children were invited to Croft Christmas Trees near Whixall to select two Christmas trees from their Christmas Tree Farm which they very kindly donated to the school.

We had a really super afternoon and we can't recommend highly enough if you are looking for a Christmas Tree Farm where you can 'pick your own' [www.facebook.com/thecroftchristmastreesandglampng/?locale=en\\_GB](https://www.facebook.com/thecroftchristmastreesandglampng/?locale=en_GB)



We look forward to getting them in position at the start of next week before our Carols Around Christmas Tree event on 8th December at 2:45pm.

**Christmas singing at the Parish Hall**

Wednesday afternoon's singing at the Parish Hall was truly special! The children shone brightly, and their confidence and joy were evident in every note. We know the Wednesday Club ladies thoroughly enjoyed the performance, and that wouldn't have been possible without the incredible support and encouragement from you all.

Your dedication to nurturing the children's talents and helping them feel proud of themselves makes all the difference.



**Christmas at Welshampton**

**3<sup>rd</sup> December - Festive Late-Night Shopping Childcare  
5:30pm – 7:30pm  
£5 per child**

We know how busy this time of year can be, so we are looking at offering an evening of childcare to give you the chance to enjoy some late-night Christmas shopping.

The children are welcome to come in/bring pyjamas and watch a Christmas film with maybe a Christmas game or two as well as a free hot dog while you get some stress-free shopping time! Further information to follow after half term.

**8<sup>th</sup> December - Carols Around the Christmas Tree  
2:45pm**

Parents, carers, grandparents, and siblings are warm invited to celebrate at our Christmas themed Whole School Forest School Day.

Sing along to your favourite carols around the tree, enjoy a cup of hot chocolate, toast a marshmallow over the fire and we may even have a little mulled wine and a mince pie to keep you warm!

**10<sup>th</sup> December - Non-Stop Christmas Party**

We're very excited to be hosting a Non-Stop Christmas Party at Welshampton Parish Hall following our school Christmas dinner.

As we have the hall booked for the whole day, we'll begin with a Festive Talent Show in the morning, followed by Christmas crafts, and then the party in the afternoon.

**Executive Headteacher:** Mr Ben Crompton

**Address:** Welshampton Church of England Primary School, Welshampton, Shrewsbury SY12 0PG **Telephone:** 01948710325  
**Twitter:** @WelshamptonSch **Email:** admin@welshampton.shropshire.sch.uk **Website:** [www.welshamptonceprimary.co.uk](http://www.welshamptonceprimary.co.uk)

### **16<sup>th</sup> December – Christmas Nativity – 5:30pm**

Join us in the church for this year's Nativity performance

### **19<sup>th</sup> December – End of Term Service – 9:15am**

The whole school will join together as we end the term in church with our traditional Christmas Service.

### **Danceathon Success**

We raised an incredible £355, which will be price matched, doubling the impact of our families' efforts! The children had a brilliant time dancing, and it was wonderful to see their enthusiasm shining through.

We're also proud to share that the Quality Moments Matter campaign has been a tremendous success nationally. The target was £500,000 with match funding, but together we've helped push the total to over £815,000!

### **Oteley Visit**

This afternoon, we took all of Willow Class to visit the Oteley Estate. We are keen on getting our children out and about and visiting local farms really gives them a sense of the community that they are growing up in.

We fed the highland cattle and pigs, as well as taking a trailer ride around the estate.

It was a wonderful afternoon of exploration so thank you to Miss Hannaby for organising.

If you are passing, it really is a lovely place to pop in and grab a coffee and see the highland cattle whilst you're there! [www.oteley.com](http://www.oteley.com)

### **Clothes Bank Reminder**

You may have seen that we have a Clothes Bank at the entrance to the school. You are welcome to bring any old clothes and toys you may have and drop them in the very large container which is with us for the next couple of weeks.

### **Fabulous Footballers**

We hosted Newtown and St Peters on Thursday night as we competed in the next round of our three-way tournament. The children worked relentlessly and enjoyed a fabulous 3-2 victory over Newtown before coming up a bit short in the game against St Peters but sometimes we learn more about ourselves in defeat. Well done boys – you never gave up and thankfully we were rewarded with a couple of games this time!

**Executive Headteacher:** Mr Ben Crompton

**Address:** Welshampton Church of England Primary School, Welshampton, Shrewsbury SY12 0PG **Telephone:** 01948710325  
**Twitter:** @WelshamptonSch **Email:** admin@welshampton.shropshire.sch.uk **Website:** [www.welshamptonceprimary.co.uk](http://www.welshamptonceprimary.co.uk)

### **Friends of Welshampton**



## **Annual Meeting (AGM)**

**TUESDAY 2<sup>ND</sup> DECEMBER**

**19:00 TO 20:00**

**SUN INN, WELSHAMPTON**

We are down to less than a handful of volunteers, we urgently need new volunteers to keep the PTA going. Without enough support, the PTA will sadly fold at the end of the year.

**Please come along to learn more about what we do and what you can do to help!**  
Please text 07738151538 if you plan to attend

Our Friends of Welshampton team plays a vital role in supporting our school and creating memorable experiences for our children.

We are incredibly grateful to Sophie Mainwaring, who has done an amazing job as Chair, for her dedication and hard work over the years. Sophie will be stepping down from her role, and we'd love to keep the momentum going!

This is a fantastic opportunity to get involved, meet other parents, and make a real difference.

If you're interested or would like to know more, please get in touch with us or pop along to the AGM on Tuesday 2nd December at The Sun Inn at 7.00pm.

### **Medical Appointment Reminder**

Where possible, please make medical appointments outside of school time so not to interrupt your child's learning. Whilst we accept this is not always possible, it would be appreciated if you could do your best. Thank you.

### **School Admission Changes within Shropshire**

Shropshire Council, as admission authority for community and controlled schools in Shropshire, is conducting a consultation exercise on School Admission Arrangements for 2027/28.

The Council is simultaneously coordinating a consultation exercise for own admission authority schools, such as academies, whose governing bodies/trustees are responsible for setting their

admission arrangements and who wish to make changes to those arrangements.

They wish to notify all parents/carers that the consultation will begin on 28 November 2025 and continue for more than 6 weeks until 16 January 2026.

The proposed amendment to Shropshire Council's admission arrangements is as follows:

"Changing the definition of a sibling from 'older sibling' to 'a sibling' to the oversubscription criteria for all community and voluntary controlled schools in Shropshire."

Further details are attached to the document sent out with this newsletter.



### Weekly Attendance

#### Attend Today, Achieve Tomorrow...

Willow - 100% ★★★★★

Beech - 99% ★★★★★

Oak - 100% ★★★★★

Weekly average: 99%

So close to the full house! Well done all!



### Shining Stars of The Week!

#### Willow Class

Finley for showing amazing strength and love during our singing performance

#### Beech Class

Tom for showing great strength and love in our debating sessions in literacy

#### Oak Class

Jack for showing great determination in his Big Write



### Pen License

This week Adam has gained his license.



### Values Awards

*as chosen by our values ambassadors  
Luke P, Connie and Matha.*

#### Strength

Ava for helping other people

#### Love

Esther for showing love towards the younger children and for playing with them when they are sad.

#### Wisdom

Luke Dar for his super Big Write



### Class Dojo Monthly Awards

#### Willow Class

Charlotte, Kasen and Poppy Da

#### Beech Class

Mila, Zac and Zach

#### Oak Class

Evie, Freddie and Martha

Have a wonderful weekend!

Kind regards,  
Mr Ben Crompton.

### Key School Dates

#### December

3<sup>rd</sup> December

Christmas Shopping Night  
5:00pm – 7:30pm

8<sup>th</sup> December

Carols Around Christmas Tree  
2:45pm

10<sup>th</sup> December

Christmas Jumper Day

16<sup>th</sup> December

Christmas Nativity  
5:30pm

19<sup>th</sup> December

End of Term Service  
9:15am

#### January

8<sup>th</sup> January

Cinderella Pantomime

**Executive Headteacher:** Mr Ben Crompton

**Address:** Welshampton Church of England Primary School, Welshampton, Shrewsbury SY12 0PG **Telephone:** 01948710325  
**Twitter:** @WelshamptonSch **Email:** admin@welshampton.shropshire.sch.uk **Website:** [www.welshamptonceprimary.co.uk](http://www.welshamptonceprimary.co.uk)



## Winter Holiday Fun and Food in Shropshire **Book Now!**

Over the Winter holidays, HAF eligible children and young people aged 4 (reception class) to 16, are invited to attend free clubs happening across the county.

Food and drink will be provided at all the clubs.

A unique code and information about how to book a free place at a holiday club/s will be provided from school.

**"Safe, enjoyable, fun and great to have somewhere for children to be."** Parent.

Many holiday clubs have paid spaces available for those not eligible for HAF. Find out more:

Web: [www.shropshire.gov.uk/haf](http://www.shropshire.gov.uk/haf)

Email: [HAF.programme@shropshire.gov.uk](mailto:HAF.programme@shropshire.gov.uk)



# mammoth

## SANTA TRAIL

Kindly supported by

Book your slot  
BETWEEN  
10AM AND 3PM

**£10**  
PER CHILD\*

13  
DEC, 2025

Book online

Follow the elves and snowballs through our exhibition as you answer questions and join in activities on your way around.  
Say "hi" to the mammoth himself and finish the trail with a gift from Santa as you meet him in his grotto.

There will be festive refreshments available at the end of the trail with treats for the adults too!

**\*PRICE INCLUDES EXHIBITION ENTRANCE**  
**ONE FREE ADULT PER PAYING CHILD**  
ADMISSION PRICE APPLIES TO ADDITIONAL ADULTS

[WWW.SHROPSHIREHILLSDISCOVERYCENTRE.CO.UK](http://WWW.SHROPSHIREHILLSDISCOVERYCENTRE.CO.UK)  
[INFO@SHROPSHIREHILLSDISCOVERYCENTRE.CO.UK](mailto:INFO@SHROPSHIREHILLSDISCOVERYCENTRE.CO.UK)  
 01588 676060  
 SCHOOL ROAD, CRAVEN ARMS SY7 9RS  
 GROW COOK LEARN, A REGISTERED CHARITY: 1158795

**Executive Headteacher: Mr Ben Crompton**

**Address:** Welshampton Church of England Primary School, Welshampton, Shrewsbury SY12 0PG **Telephone:** 01948710325  
**Twitter:** @WelshamptonSch **Email:** [admin@welshampton.shropshire.sch.uk](mailto:admin@welshampton.shropshire.sch.uk) **Website:** [www.welshamptonceprimary.co.uk](http://www.welshamptonceprimary.co.uk)