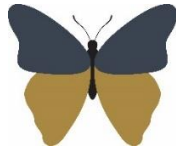


**Welshampton Church of England
Primary School**



**Growing together
in strength, love and wisdom, we shine.**

**Newsletter
Friday 7th November 2025**

Message from the Head

Welcome back to school – I hope you had a restful break with the children.

It's been a wonderful week at school, filled with energy and creativity. The inspiring teaching has created a vibrant atmosphere where children are thriving and engaged in their learning.

It has also been lovely to welcome a number of new families to the Welshampton Family. I am sure you will join me in welcoming them and showing them what makes our school so special.

Colour Run Fundraising Success

A huge thank you to everyone who took part in and supported our Colour Run! We raised an amazing **£435.50**, with an additional **£114** from Friends. With Barclays price matching, we expect to receive a total of £1,098.

These funds will be used to provide termly treats for the children throughout the year a wonderful way to celebrate their hard work and make school life even more special.

Odd Socks Day for Anti-Bullying Week

Next week is anti-bullying week and this year everyone is welcome to come to school wearing odd socks to mark the start of the week!! Therefore, everyone is invited to wear odd socks on Monday!



Christmas at Welshampton

**3rd December - Festive Late-Night Shopping Childcare
5:00pm – 7:30pm
£5 per child**

We know how busy this time of year can be, so we are looking at offering an evening of childcare to give you the chance to enjoy some late-night Christmas shopping.

The children are welcome to come in/bring pyjamas and watch a Christmas film with maybe a Christmas game or two as well as a free hot dog while you get some stress-free shopping time! Further information to follow after half term.

10th December - Non-Stop Christmas Party

We're very excited to be hosting a **Non-Stop Christmas Party at Welshampton Parish Hall** following our school Christmas dinner.

As we have the hall booked for the whole day, we'll begin with a **Festive Talent Show** in the morning, followed by **Christmas crafts**, and then the party in the afternoon.

This joyful day is made possible thanks to the funds raised from our recent Colour Run. More details to follow.

16th December – Christmas Nativity – 5:30pm

Join us in the church for this year's Nativity performance

19th December – End of Term Service – 9:15am

The whole school will join together as we end the term in church with our traditional Christmas Service.

After-School Clubs Autumn 2

Clubs next half term will be as follows:

Monday - Muddy Monday
Tuesday - Football
Wednesday - Cookery
Thursday - Netball
Friday - Chill Out

Executive Headteacher: Mr Ben Crompton

Address: Welshampton Church of England Primary School, Welshampton, Shrewsbury SY12 0PG **Telephone:** 01948710325
Twitter: @WelshamptonSch **Email:** admin@welshampton.shropshire.sch.uk **Website:** www.welshamptonceprimary.co.uk

Oak Class Field Fun & Inspire Afternoon

Oak Class will be enjoying outdoor learning on Monday so don't forget your outdoor Forest School Kit!

Parents are invited to join their children from 2pm... so don't forget your outdoor Forest School Kit!

Forest School Kit Reminder

As the weather turns colder and wetter, we kindly remind parents to ensure children come to school with appropriate Forest School kit on their designated days.

Children should bring:

- Waterproof jacket and trousers
- Wellington boots
- Warm layers (including hats and gloves)
- Clothing that can get muddy and messy

Unfortunately, some children have recently arrived without suitable clothing, which may mean they are unable to take part in outdoor learning. Forest School is a valuable part of our curriculum, and we want every child to enjoy it safely and comfortably.

Thank you for your support in helping us make the most of our brilliant outdoor opportunities!

National School Meals Week

We're excited to be taking part in National School Meals Week (NSMW) 10th - 14th November, a nationwide celebration of healthy, nutritious school meals. Throughout the week, children will enjoy fun activities and resources with a Shire Services twist to help them learn about healthy eating, nutrition, and the importance of school meals.

These initiatives are brought to you by Shire Services, who work hard to make lunchtimes enjoyable, healthy, and memorable for pupils.

We encourage all children to join in, try a school meal, and enjoy the activities. School meals are a great way for children to learn healthy habits, stay full and focused for learning, and support our school community.

Children in Need – Friday 15th November

We're proud to be supporting Children in Need this year with a non-uniform day and a challenge for pupils to complete 25 acts of kindness throughout the week.

This initiative encourages empathy, generosity, and community spirit values we hold dear at Welshampton.

We can't wait to see the creative and thoughtful ways our children choose to spread kindness.

School Open Day

We're excited to be opening our doors to prospective families on Thursday 13th November for our School Open Day. This is a wonderful opportunity for visitors to experience the warmth, creativity, and excellence that make Welshampton so special. We will be sharing what makes our school the best in the world!

Please help spread the word we'd love to welcome even more families into our community

Welshampton Bonfire Committee Appela

In order to safeguard our young actors in this year's Welshampton Panto, we are in need of some willing volunteers to act as official chaperones. This role involves not only keeping an eye on the children, but acting In Loco Parentis during rehearsals and performances, even if the child's parents are elsewhere in the building.

We are in the process of updating our Child Safeguarding Policy, but it will include guidelines on dressing rooms, toilet facilities, breaks, and signing in/out at the start and end of each rehearsal/show. The chaperones need to have a current and up-to-date Enhanced DBS (this can be organised by the Bonfire Committee if needed), and to be available for as many rehearsals as possible between 30th November 2025 and 22nd February 2026 (Tuesday evenings and Sunday afternoons until the week of the show). Performance dates are: Friday 20th Feb (evening), Saturday 21st Feb (matinee and evening), and Sunday 22nd Feb (matinee).

Depending on how many chaperones we can find, there should be some flexibility here. Any further questions, Liza will do her best to answer them! She can be contacted on eashby@hotmail.co.uk.

Many thanks.



Weekly Attendance

Attend Today, Achieve Tomorrow...

Willow - 98% ★★

Beech - 97% ★

Oak - 99% ★★★

Weekly average: 98%

Executive Headteacher: Mr Ben Crompton

Address: Welshampton Church of England Primary School, Welshampton, Shrewsbury SY12 0PG **Telephone:** 01948710325

Twitter: @WelshamptonSch **Email:** admin@welshampton.shropshire.sch.uk **Website:** www.welshamptonceprimary.co.uk



Shining Stars of The Week!

Willow Class

Max and Grayson for showing strengthen within their first week at Welshampton.

Beech Class

Emma for showing great strength with her column subtraction.

Oak Class

Rosie for showing great strength in her school day.



Values Awards

as chosen by our values ambassadors.

Strength

Theo L

Love

Yvaine

Wisdom

Ethan

Outside Achievements

Ethan has gained his 50m in swimming and participated in a dark run!

Congratulations to Zach on gaining a trophy for "Player of the match" in rugby

Have a wonderful weekend!

Kind regards,
Mr Ben Crompton.



Key School Dates

November

11th November
13th November
15th November

Armistice Day
Open Day
Children In Need

December

3rd December

10th December
16th December

19th December

Christmas Shopping Night
5:00pm – 7:30pm
Christmas Jumper Day
Christmas Nativity
5:30pm
End of Term Service
9:15am

January

8th January

Cinderella Pantomime

Executive Headteacher: Mr Ben Crompton

Address: Welshampton Church of England Primary School, Welshampton, Shrewsbury SY12 0PG **Telephone:** 01948710325
Twitter: @WelshamptonSch **Email:** admin@welshampton.shropshire.sch.uk **Website:** www.welshamptonceprimary.co.uk



You are invited to

WELSHAMPTON
CHURCH OF ENGLAND
PRIMARY SCHOOL
OPEN DAY

THURSDAY 13TH NOVEMBER
9:30AM - 11:30AM

*The small school where
BIG THINGS HAPPEN*

admin@welshampton.shropshire.sch.uk

www.welshamptonceprimary.co.uk

01948 710 325

