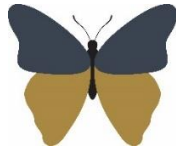


**Welshampton Church of England
Primary School**



**Growing together
in strength, love and wisdom, we shine.**

**Newsletter
Friday 24th October 2025**

Message from the Head

This half term has been full of exciting learning experiences and community events.

We've welcomed several new children and families across the school, from Nursery to Year 6. It's been a pleasure to see them settling in and becoming part of our school community.

Our **Meet the Teacher** events gave parents a chance to connect with staff and learn more about the year ahead. We also hosted a **Support Your Child with Phonics evening**, offering practical advice to help families support early reading at home.

Parents joined us for **Forest School Inspire sessions**, enjoying time outdoors with their children and seeing first-hand how we use nature to support learning and wellbeing.

Children took part in **music workshops**, explored faith and culture during a **trip to Liverpool's Synagogue and Cathedral**, and represented the school in **four football tournaments and matches**, showing great teamwork and enthusiasm.

The undoubted highlight was celebrating our **175th School Anniversary**. The event included guided tours, poetry, special guests, a commemorative tree planting, and the burial of a time capsule—bringing together past, present, and future in a truly memorable way.

We also came together for our **Harvest Festival**, reflecting on gratitude and giving, with generous donations from families.

And finally, we ended the term on a high with today's **brilliantly unmissable Colour Run** which a joyful celebration of energy, fun, and community spirit.

It's been a busy and rewarding half term, and we're all ready for a well-earned rest. Thank you for your ongoing support—we're already looking forward to the second half of the term and the run-up to Christmas...

**3rd December - Festive Late-Night Shopping Childcare
5:00pm – 7:30pm
£5 per child**

We know how busy this time of year can be, so we are looking at offering an evening of childcare to give you the chance to enjoy some late-night Christmas shopping.

The children are welcome to come in/bring pyjamas and watch a Christmas film with maybe a Christmas game or two as well as a free hot dog while you get some stress-free shopping time! Further information to follow after half term.

16th December – Christmas Nativity – 5:30pm
Join us in the church for this year's Nativity performance

19th December – End of Term Service – 9:15am
The whole school will join together as we end the term in church with our traditional Christmas Service.

Swimming After Half Term
Next half term, Beech Class be going swimming every Friday.

After-School Clubs Autumn 2
Clubs next half term will be as follows:

Monday - Muddy Monday
Tuesday - Football
Wednesday - Cookery
Thursday - Netball
Friday - Chill Out

Money Owed to School
As we approach the end of term, please ensure all outstanding debts for school meals and clubs be paid in full before. We will accept part payments weekly until balances are cleared. Please make every effort to keep any outstanding amount to a minimum. To make payment please visit www.eduspot.co.uk/schoolmoney
Thank you.

Executive Headteacher: Mr Ben Crompton

Address: Welshampton Church of England Primary School, Welshampton, Shrewsbury SY12 0PG **Telephone:** 01948710325
Twitter: @WelshamptonSch **Email:** admin@welshampton.shropshire.sch.uk **Website:** www.welshamptonceprimary.co.uk

Colour Run Success

What a brilliant event that was! Despite the weather being questionable, it was wonderful to see such a great time had by all – with loads of colour, hot chocolate and hot dogs!

Huge thanks to Mrs Ramsdale and Mrs Liley for the excellent organisation and the Friends for top notch catering... including the hot apple juice which was a particular favourite!

Early indications suggest that we have raised over £500 which will be doubled by Barclays Bank!

What a great way to finish the half term... It was an event which will last long in the memory... as will the dye in our hair and clothes!

Music Squad Launch – Join the Joy!

The children have enjoyed workshops and a Music Squad assembly over recent weeks!

We're now excited to announce a fantastic new opportunity for our children: Music Squad piano lessons and after-school keyboard clubs are now available!

Music Squad is all about making music fun, engaging, and confidence-building. Their lessons are designed to help children flourish – developing self-esteem, focus, and a lifelong love of music. Whether it's one-to-one piano sessions during the school day or lively group keyboard clubs after school, there's something for every budding musician.

Highlights include:

- Daytime one-to-one piano lessons every Tuesday – no after-school commitments!
- After-school keyboard club (Tuesdays until 4:30pm) – small group fun with pop songs and musical games.
- Weekly updates with photos and videos sent straight to parents.
- Easy online registration and flexible payments.
- First lesson free when you join this term!

Spaces are limited, so don't miss out! For full details and to register, please see the flyer attached or visit www.musicsquad.co.uk and click "Register now" under the Shropshire branch.



Weekly Attendance

Attend Today, Achieve Tomorrow...

Willow - 97% ★★★★★

Beech - 95% ★★

Oak - 96% ★★

Weekly average: 96%



Shining Stars of The Week!

Willow Class

Tommy for always trying his best and showing a love for learning

Beech Class

Teddy for showing great strength and determination in his amazing Big Write

Oak Class

Zoe for showing great strength and love towards her new crochet club

Class Dojo Champs

Willow Class

Charlotte, George and Tommy

Beech Class

Ivy, Tom and Zac

Oak Class

Bella, Luke Dar and Luke P

A final reminder that we are still in school next week – unlike some local schools – before we break up for half term next Friday.

Have a wonderful break!

Kind regards, Mr Ben Crompton.

Executive Headteacher: Mr Ben Crompton

Address: Welshampton Church of England Primary School, Welshampton, Shrewsbury SY12 0PG **Telephone:** 01948710325
Twitter: @WelshamptonSch **Email:** admin@welshampton.shropshire.sch.uk **Website:** www.welshamptonceprimary.co.uk



Key School Dates

November

3rd November
4th November
11th November
13th November

PD Day
Children return to school
Armistice Day
Open Day

December

3rd December

10th December
16th December

19th December

Christmas Shopping Night
5:00pm – 7:30pm
Christmas Jumper Day
Christmas Nativity
5:30pm
End of Term Service
9:15am

January

8th January

Cinderella Pantomime



You are invited to

WELSHAMPTON CHURCH OF ENGLAND PRIMARY SCHOOL OPEN DAY

THURSDAY 13TH NOVEMBER
9:30AM – 11:30AM

*The small school where
BIG THINGS HAPPEN*

admin@welshampton.shropshire.sch.uk

www.welshamptonceprimary.co.uk

01948 710 325



Executive Headteacher: Mr Ben Crompton

Address: Welshampton Church of England Primary School, Welshampton, Shrewsbury SY12 0PG **Telephone:** 01948710325
Twitter: @WelshamptonSch **Email:** admin@welshampton.shropshire.sch.uk **Website:** www.welshamptonceprimary.co.uk