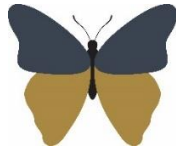


**Welshampton Church of England  
Primary School**



**Growing together  
in strength, love and wisdom, we shine.**

**Newsletter  
Friday 10<sup>th</sup> October 2025**

---

**Message from the Head**

Tonight, some of our children have been busy performing and entertaining the community of Welshampton.

This was part of the annual 'Curtain Concert' variety event at Welshampton Parish Hall. It was a fun-filled nautically themed evening of poetry, dancing, music and song, storytelling and other assorted silliness, and raised funds for new stage curtains for the hall.

The children did exceptionally well and represented the school brilliantly.



**Sporting Outings**

It has been a busy week of sport with children in Year 5 and 6 taking part in a mini tournament at Ellesmere College on Thursday and our Year 3 and 4 children playing in tournaments at Ellesmere Rangers on Wednesday.



**Parents Evening**

This term's Parents Evenings are next week on Monday 13<sup>th</sup> and Thursday 16<sup>th</sup> October.

To save us approximately £500 per year, we have moved to a temporary paper system for this term's Parents Evening.

We expect to have an alternative electronic system in place for Spring Term.

Whilst we have done our best to accommodate wishes, at some times on some days it was impossible to please everyone. However, if the appointment you have been given is not convenient, please contact your teacher to make an alternative appointment.

**Executive Headteacher:** Mr Ben Crompton

**Address:** Welshampton Church of England Primary School, Welshampton, Shrewsbury SY12 0PG **Telephone:** 01948710325  
**Twitter:** @WelshamptonSch **Email:** admin@welshampton.shropshire.sch.uk **Website:** [www.welshamptonceprimary.co.uk](http://www.welshamptonceprimary.co.uk)

### Welshampton Colour Run Time Change

The inaugural Welshampton Autumn Colour Run will now run from 3:00pm rather than 3:30pm.



### Reception Starters 2026

As parents of young children look to make a decision of where their child will go to school in 2026, please encourage any friends and neighbours to come and see everything we have to offer at Welshampton. When we show parents around, despite social media, advertising, banners, great inspection reports, it's amazing how many people didn't know we were here!

It really is a great place for children to be educated, so please spread the word to enable us to sustain and improve what we have! Remember – 'every day is open day' – so encourage them to come and take a look!

**Executive Headteacher:** Mr Ben Crompton

**Address:** Welshampton Church of England Primary School, Welshampton, Shrewsbury SY12 0PG **Telephone:** 01948710325  
**Twitter:** @WelshamptonSch **Email:** admin@welshampton.shropshire.sch.uk **Website:** [www.welshamptonceprimary.co.uk](http://www.welshamptonceprimary.co.uk)



### Shining Stars of The Week!

#### Willow Class

Emily P for showing love and kindness to all her friends.

#### Beech Class

Bobby for his love of Roman Numerals

#### Oak Class

Bella for showing love and determination in this weeks maths



#### Headteacher's Award

Meghan for trying so hard in the football tournament at Ellesmere College.



#### Outside Achievements

Huge well done on competing in Chester Mini Marathon



#### Weekly Attendance

#### Attend Today, Achieve Tomorrow...

Willow Class – 99% ★★

Beech Class- 100% ★★★

Oak Class- 98% ★

Weekly average: 98%

Another super week of attendance!  
Well done everyone!

Have a wonderful weekend!

Kind regards, Mr Ben Crompton.

#### Key School Dates

##### October

13<sup>th</sup> October

Harvest Festival Service  
9:15am in church

13<sup>th</sup> October

Parents Evening

16<sup>th</sup> October

Parents Evening

24<sup>th</sup> October

Break for Half – Term