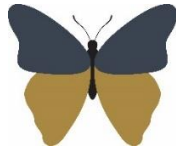


**Welshampton Church of England
Primary School**



**Growing together
in strength, love and wisdom, we shine.**

**Newsletter
Friday 3rd October 2025**

Message from the Head

Wow! What a week!

This week, we celebrated a truly special milestone—175 years of Welshampton Church of England Primary School. It was a joy to welcome former pupils, staff, and members of our local community back through the school gates. Hearing their stories and memories from years gone by was a real privilege, and a reminder of the deep roots and rich history we're all part of.

Equally heartening was the wonderful feedback we received from our guests, who spoke so positively about the children, the staff, and the warm, respectful atmosphere that fills our school today. Many commented on the children's confidence and politeness, which made us incredibly proud.

It was a day that reminded us we're not just part of the school's history—we're shaping its future. The sense of pride and togetherness was palpable, and it's given us fresh energy to keep building, growing, and looking ahead to even more exciting times.

A huge thank you to all the staff who made the day run so smoothly, and to the children, who were absolute stars throughout. It was wonderful to see them have so much pride in the school they help make so special.

It was an event which also hit the press...

<https://www.bordercountiesadvertizer.co.uk/news/25513360.top-ten-shropshire-primary-school-celebrates-175-years/>

<https://www.dailymotion.com/video/x9rik06>

Liverpool Trip

The children explored both Liverpool Cathedral and the Synagogue, and their behaviour throughout was exemplary. It was a valuable opportunity to experience two distinct – yet in many ways similar – places of worship.

Especially in light of recent events, it feels more important than ever to help our children understand the diverse world around them. By learning about different beliefs and cultures, we nurture empathy, acceptance, and a deeper appreciation of the values that unite us.

Welshampton Colour Run



WELSHAMPTON COFE PRIMARY



**FRIDAY 24TH OCTOBER 2025
FROM 3:30**

**EVERYONE
WELCOME!**

TICKETS AVAILABLE FROM THE SCHOOL OFFICE!
LOCAL COMMUNITY WELCOME TO RESERVE TICKETS: 01948 710325

**COLOUR
RUN**

£2.50 - CHILD
£3.50 - ADULT
£10 - FAMILY (2
CHILDREN/2 ADULTS)

HOTDOGS AND WARMING
AUTUMNAL DRINKS
AVAILABLE TO PURCHASE
FROM WELSHAMPTON FRIENDS!

Executive Headteacher: Mr Ben Crompton

Address: Welshampton Church of England Primary School, Welshampton, Shrewsbury SY12 0PG **Telephone:** 01948710325
Twitter: @WelshamptonSch **Email:** admin@welshampton.shropshire.sch.uk **Website:** www.welshamptonceprimary.co.uk

Cross Country

On Wednesday, this amazing team of boys took part in the first cross country meet. The team spirit and results were fantastic with a special mention to Michael D for positioning 5th out of 156 runners.

As always we are super proud of our school. Go team Welshampton!



Music Workshop

Children from Year 1 to Year 6 had a brilliant time taking part in a fun and interactive keyboard workshop led by the Music Quad. Each class enjoyed a 30-minute session, giving every child the chance to try out the keyboards and explore music in an exciting way.

The children thoroughly enjoyed the experience, and we're looking forward to welcoming the Music Squad back soon for a whole-school assembly — with plans for an after-school keyboard club later this term!

We Love A Label!

We kindly ask all parents and carers to ensure that bottles, PE kits, uniforms, shoes, and jumpers are clearly labelled with your child's name. Items that are labelled can be quickly returned by staff or even fellow parents, helping reduce the growing pile of lost property.

With the cost of school essentials rising, labelling is a simple and effective way to avoid unnecessary replacements.

Parents Evening

This term's Parents Evenings are on Monday 13th and Thursday 16th October.

There will be a slightly different booking system introduced which will involve parents selecting a preferred time frame and then school staff will let you know your official timings once they've received all preferences. Further details to be shared shortly.

Reception Starters 2026

As parents of young children look to make a decision of where their child will go to school in 2026, please encourage any friends and neighbours to come and see everything we have to offer at Welshampton. When we show parents around, despite social media, advertising, banners, great inspection reports, it's amazing how many people didn't know we were here!

It really is a great place for children to be educated, so please spread the word to enable us to sustain and improve what we have! Remember – 'every day is open day' – so encourage them to come and take a look!



Shining Stars of The Week!

Willow Class

Honey for being a Nursery 'super star!'

Beech Class

All of Beech Class for being such a joy to take on our school trip to Liverpool.

Oak Class

Luke Di for always being an amazing advocate for our school.



Headteacher's Award

The whole school for ensuring our 175th Anniversary celebrations was such a brilliantly successful day!



Outside Achievements

Jack and Theo Lipson for achieving their 'First Star' black belts in Taekwondo.

Executive Headteacher: Mr Ben Crompton

Address: Welshampton Church of England Primary School, Welshampton, Shrewsbury SY12 0PG **Telephone:** 01948710325
Twitter: @WelshamptonSch **Email:** admin@welshampton.shropshire.sch.uk **Website:** www.welshamptonceprimary.co.uk



Weekly Attendance

Attend Today, Achieve Tomorrow...

Willow Class – 98% ★★★★★

Beech Class- 98% ★★★★★

Oak Class- 99% ★★★★★

Weekly average: 98%

Another super week of attendance!

Well done everyone!

Have a wonderful weekend!

Kind regards,
Mr Ben Crompton.



Executive Headteacher: Mr Ben Crompton

Address: Welshampton Church of England Primary School, Welshampton, Shrewsbury SY12 0PG **Telephone:** 01948710325
Twitter: @WelshamptonSch **Email:** admin@welshampton.shropshire.sch.uk **Website:** www.welshamptonceprimary.co.uk