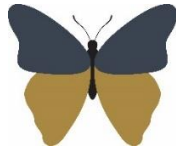


**Welshampton Church of England
Primary School**



**Growing together
in strength, love and wisdom, we shine.**

**Newsletter
Friday 26th September 2025**

Message from the Head

About this time 175 years ago, plans were afoot in Welshampton to open the village school. 4 days later the doors would open to children of the local community...

Next Wednesday marks a truly special moment in our school's history — 175 years of Welshampton Church of England Primary School. It's a milestone that fills us with pride, gratitude, and excitement for the future.

We're looking forward to welcoming families, ex-pupils and staff, and members of our community to join us for an afternoon of celebration. There will be opportunities to explore the school, enjoy performances from our pupils, and take part in a commemorative ceremony that honours our past and looks ahead to the next chapter.

This event is not just about marking the years — it's about celebrating the people, stories, and spirit that make our school so special. Whether you're a former pupil, a current parent, or a friend of the school, we'd love for you to be part of this joyful occasion. Please spread the word.



Welshampton School 1914

Executive Headteacher: Mr Ben Crompton

Address: Welshampton Church of England Primary School, Welshampton, Shrewsbury SY12 0PG **Telephone:** 01948710325
Twitter: @WelshamptonSch **Email:** admin@welshampton.shropshire.sch.uk **Website:** www.welshamptonceprimary.co.uk



Today is National Teaching Assistant Day and I'd like to publicly recognise the role that our brilliant TA's play in our school.

With ever decreasing budgets, the role of the teaching assistant has never been more important and the professional expectations of them never higher.

We are so fortunate to have a team of support staff who continuously rise to this challenge and go above and beyond for the children. Bringing warmth, encouragement and a bit of patience to ensure that all the children reach their potential.

Thank you all – you're amazing!

Songs of Praise

A huge thank you to all the children and families who attended the Welshampton Songs of Praise Service last Sunday.

You sung beautifully to a packed church and represented our school wonderfully. Thank you also to our staff who gave up their Sunday evening to support the children and local community at the service.

Football Tournament

On Wednesday we visited Newtown to take part in a small football tournament and took on Newtown and St Peters Year 5 and 6 football teams.

It was a hard fought and tight competition with only two goals scored across the three matches. But with a fine draw against St Peters and victory over Newtown we went into a dramatic penalty shootout to decide the victors!

The tension was palpable but with calm heads and great skill, the team came out victorious and champions! Congratulations boys! We look forward to defending our crown later on in the term...



Anyone for a School Dinner?

Each term, schools submit data to the Department for Education, including how many children take up a hot school meal. This information is used to calculate funding. A higher uptake on Census Day can mean more money for our school — helping us provide even better opportunities for your child.

So, if your child usually brings a packed lunch, please consider switching to a hot school dinner next Thursday. It's a small change that can make a big difference.

Liverpool Trip

part of our commitment to providing a rich and inclusive education, pupils will be visiting both the Liverpool Synagogue and Liverpool Cathedral on Monday.

This experience supports our Religious Education curriculum, which encourages children to explore a range of beliefs and traditions in a respectful and thoughtful way.

Learning about different religions — including Christianity, Judaism, Islam, Hinduism, and others — helps children to:

- Understand and appreciate diversity in our communities and the wider world.
- Develop empathy and respect for others, regardless of background or belief.
- Recognise shared values such as kindness, peace, and community across different faiths.
- Become informed, open-minded citizens who contribute positively to society.

By visiting places of worship and engaging with people from different faith communities, children gain valuable insights that help build a more peaceful and understanding world.

We look forward to a meaningful and enriching day of learning.

Reception Starters 2026

As parents of young children look to make a decision of where their child will go to school in 2026, please encourage any friends and neighbours to come and see everything we have to offer at Welshampton. When we show parents around, despite social media, advertising, banners, great inspection reports, it's amazing how many people didn't know we were here!

It really is a great place for children to be educated, so please spread the word to enable us to sustain and improve what we have! Remember — 'every day is open day' — so encourage them to come and take a look!

Executive Headteacher: Mr Ben Crompton

Address: Welshampton Church of England Primary School, Welshampton, Shrewsbury SY12 0PG **Telephone:** 01948710325
Twitter: @WelshamptonSch **Email:** admin@welshampton.shropshire.sch.uk **Website:** www.welshamptonceprimary.co.uk

Monday Stay & Play Sessions

Every Monday we welcome children and parents up to Reception school age to join us for Stay & Play sessions. These sessions are creative and fun so please spread the word to anyone that you think would be interested.



Shining Stars of The Week!

Willow Class

Hagan for amazing start at Welshampton

Beech Class

Tom for this amazing first paragraph in his "Big Write"

Oak Class

Kieran for making an impressive start to Year 5



Class Dojo Champions

Willow Class

Autumn, Hagan and Kasen

Beech Class

Emma, Ethan and Kiera

Oak Class

Martha, Henry and Rosie



Headteacher's Award

Luke P for driving the football team forward to victory with his relentless belief and energy.



Outside Achievements

Congratulations to Tate on gaining his White Belt grading in Tae Kwon Do

Weekly Attendance

Attend Today, Achieve Tomorrow...

Willow Class – 98% ★★

Beech Class- 98% ★★

Oak Class- 99% ★

Weekly average: 98%

Another super week of attendance!
Well done everyone!



Have a wonderful weekend!

Kind regards,
Mr Ben Crompton.

Key School Dates

September

27th September

Newhampton Trip to Liverpool

October

1st October

10th October

13th October

24th October

175th Anniversary

Curtain Call Concert

Harvest Festival Service

Break for Half – Term

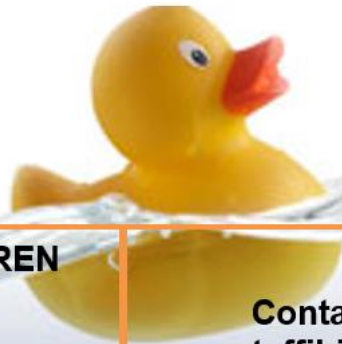
Executive Headteacher: Mr Ben Crompton

Address: Welshampton Church of England Primary School, Welshampton, Shrewsbury SY12 0PG **Telephone:** 01948710325

Twitter: @WelshamptonSch **Email:** admin@welshampton.shropshire.sch.uk **Website:** www.welshamptonceprimary.co.uk

TITANS LEARN TO SWIM

Children's swimming lessons – Book your free trial



- * **SWIMMING LESSONS FOR CHILDREN FROM 2 YEARS OF AGE**
- * **VERY SMALL CLASSES**
- * **HIGHLY QUALIFIED, DBS CHECKED SWIM TEACHERS**
- * **LESSONS HELD AT THE ELLESMERE PRIMARY SCHOOL POOL ON MONDAYS, WEDNESDAYS AND SATURDAYS**

Contact Steffi Bircher:
steffibircher@gmail.com
www.titanslearntoswim.co.uk
or find us on Facebook
(Ellesmere Titans Learn to Swim)