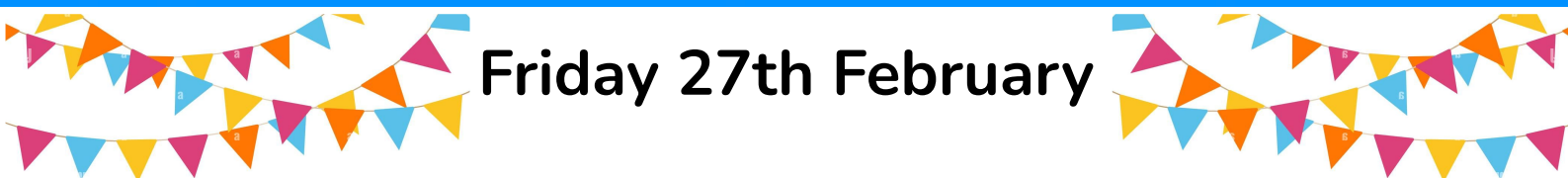




# New Brighton

# Weekly News



## Friday 27th February



### This term in PSHE our topic is...Healthy Me!

The children will consider how lifestyle choices can affect their health and be encouraged to make healthy choices where possible. We will consider exercise, medicine and how to keep ourselves safe. Upper key stage two will also start to look very briefly at the impact of drugs and alcohol.

### *Asbestos Warning from the Child Accident Prevention Trust;*

Several Stretcherz Toys have been recalled. The sand-like material in some products may contain trace levels of asbestos. Asbestos is a banned substance because it poses a risk to health, even at low levels of exposure.

If you have one of the affected toys the advice is to stop using it immediately and return it to the store you bought it from for a full refund.



**WARNING: Stretcherz Toys Recalled**  
May contain asbestos





# ATTENDANCE MATTERS

## New Brighton Primary School

Protecting every child's right to an education

### Attendance Update

Thank you for your continued support. We are already seeing improvements in attendance and punctuality since introducing our 9:00am gate closure. Regular attendance ensures children benefit from consistent learning, friendships, routines and support — helping them build confidence and resilience.

#### ***School gates close at 9:00am***

School gates close promptly at 9:00am each morning. Late arrivals must enter via the school office. A parent/carer must sign in and provide a reason for lateness.

#### ***Medical Appointments***

Proof of medical appointments must be provided for late arrival or early collection. Without evidence, the absence will be recorded as unauthorised. Please arrange appointments outside school hours where possible.

#### ***Early Collection***

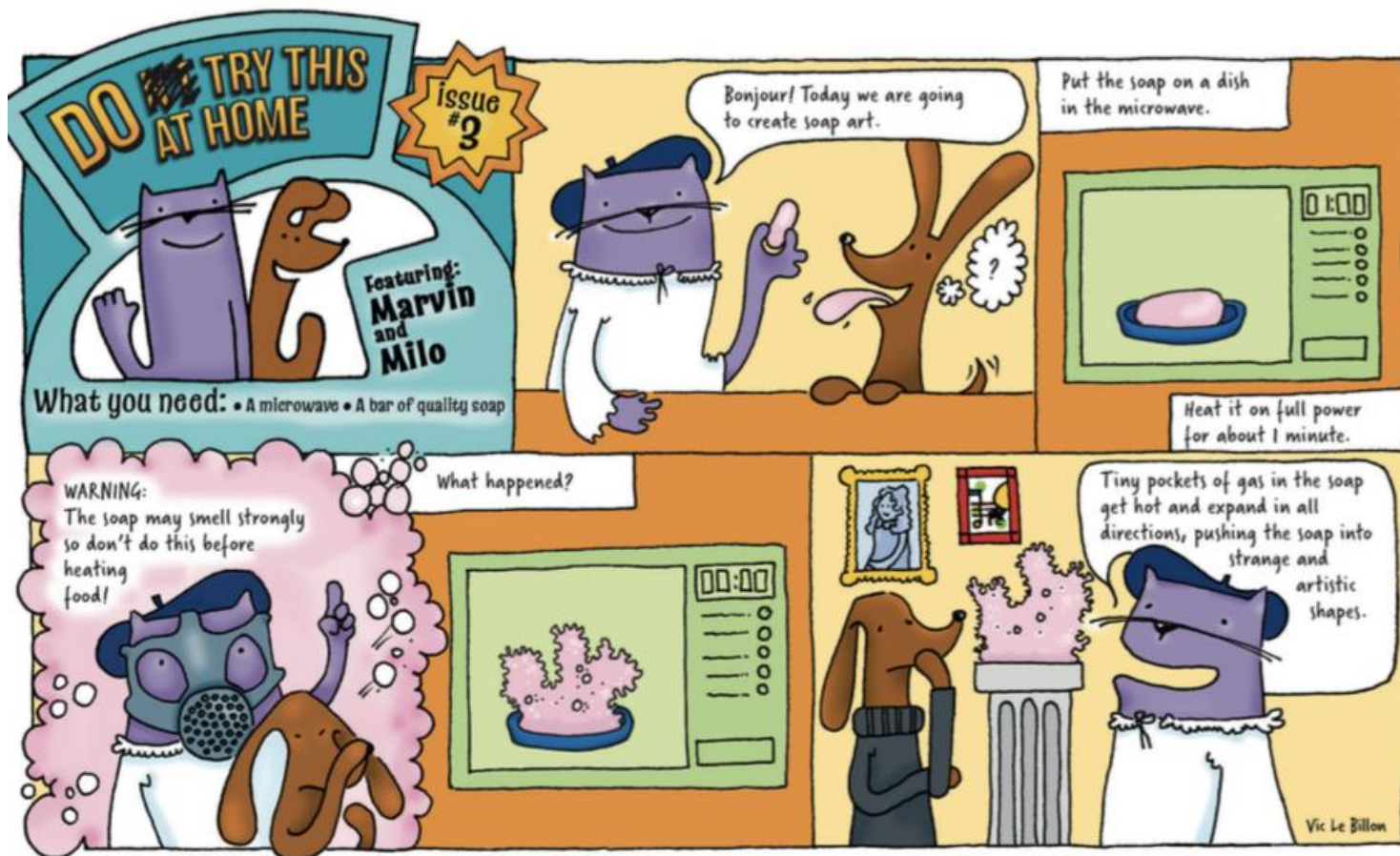
We strongly discourage early collection unless absolutely necessary. Leaving early disrupts your child's learning and the learning of others and results in lost teaching time. Every minute in school counts.

#### ***Working in Partnership with Parents***

We ask parents and carers to ensure children attend regularly and on time, inform the school promptly of any absence, and work with us if attendance becomes a concern.

[www.newbrightonprimary.co.uk](http://www.newbrightonprimary.co.uk)

# #missschoolmissout



Download more Marvin and Milo activities at [iop.org/marvinandmilo](http://iop.org/marvinandmilo)

© Institute of Physics 2019

## Upcoming Parent Workshops

**VISION BOARDS & JOURNALING** 3D THREE DIMENSIONAL TRAINING LTD

1 DAY WORKSHOP

Get creative, get inspired, and get focused. This relaxed workshop helps learners explore their goals using vision boards and simple journaling techniques. It's all about boosting motivation, building confidence, and finding a clearer sense of direction.

**Topics Covered:**

- What vision boards are and how they work
- Setting intentions and goals
- Creating your own vision board
- Journaling for self-discovery and progress
- Tips and tricks to stay motivated

WEDNESDAY 22<sup>ND</sup> APRIL  
9.30AM-2.30PM  
LOCATION:  
NEW BRIGHTON PRIMARY SCHOOL  
VAUGHAN ROAD, NEW BRIGHTON CH45 1LH

TO BOOK ONTO THIS WORKSHOP, PLEASE CONTACT:  
K.BOSTOCK@NEWBRIGHTON.WIRRAL.SCH.UK  
0151 639 3869 | 07561237924

MAKE IT A GOOD DAY

1 DAY WORKSHOP

**BASIC DIGITAL SKILLS** 3D THREE DIMENSIONAL TRAINING LTD

Our one-day Basic Digital Skills workshop helps learners build confidence using technology in everyday life. It is designed for those with little or no digital experience and covers essential skills such as staying safe online, using email, and creating basic documents. This practical session helps learners feel more capable, become more independent, and feel ready to use digital tools in both work and personal life.

**Topics covered:**

- Cyber Safety Basics:** Learn how to stay safe online and protect your online payments.
- Password Tips & Support:** Practical advice for creating strong passwords.
- Essential Computer Skills:** Develop basic typing skills and learn how to save and manage documents.
- Word Documents:** Create, format, and edit documents with confidence.
- Email Essentials:** Practice sending emails and attaching files securely.

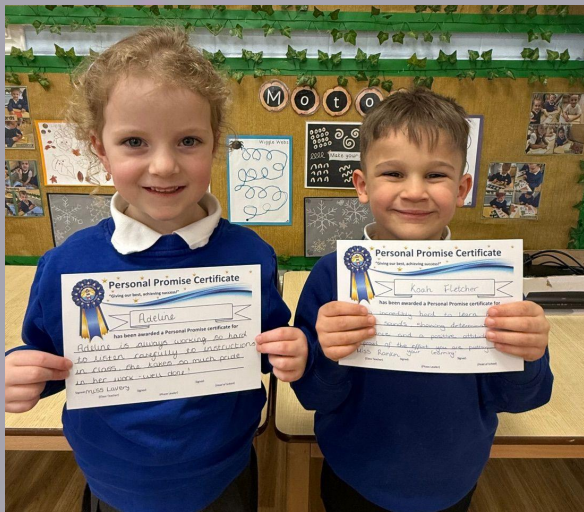
**Tuesday 19<sup>th</sup> May**  
9.30am-2.30pm  
Location: **New Brighton Primary School**  
Vaughan Road, New Brighton CH45 1LH

To book onto this workshop, please contact:  
k.bostock@newbrighton.wirral.sch.uk  
0151 639 3869 | 07561237924

# Promise Heroes

THESE STUDENTS HAVE DEMONSTRATED OUR  
SCHOOL PROMISE WELL THIS WEEK

FOUNDATION



KS1



LKS2

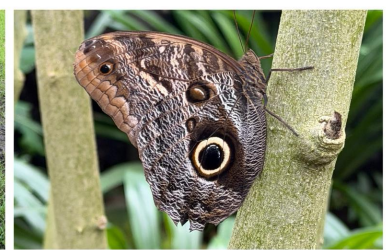
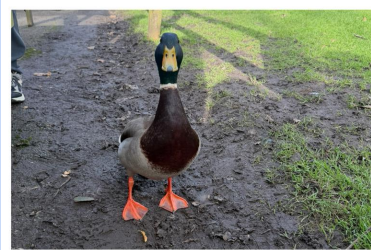


UKS2





On Tuesday, 5NM had a magical day at Chester Zoo. We saw more animals than we expected to but our favourites were the penguins, lions and the snakes. We even walked through the bat cave where the bats flew all around us and we got in the tunnels where we were centimetres away from the meerkats. We had a great time!



PIC•COLLAGE

# PARTICIPANTS NEEDED

Are you a parent/guardian of a child aged 1-17 years living in Merseyside or London, England?

Are you responsible for food shopping in a physical store, and do you take your child/children with you at least sometimes?

Would you be willing to attend or/and let your child attend an in-person focus group (approx. 1hr) with 4 or 5 other parents/guardians or children of a similar age?

IF SO,



- Researchers at the University of Liverpool and the Open University would like to invite you and/or your child to take part in the research study
- It aims to understand the experiences of children and parents/guardians who go food shopping together.
- Our findings will help show what things in supermarkets/shops and food advertising might trigger requests and how rules could be made better.

For further information, to express an interest, please follow the **link** or **contact the lead researcher**, Dr Anna Coates. Participants will be reimbursed for their time and travel expenses. Thank you!

[annacoa@liv.ac.uk](mailto:annacoa@liv.ac.uk)





This week's Makaton phrase in our new series is:

# Miss School Miss Out - a zoo trip

Brought to you by children from 6TS



## Home Reading Champions

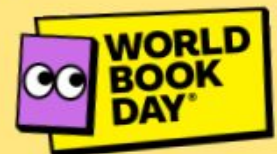
Class	%	Class	%
HUB 1	22%	3LM	57%
HUB 2		4ML	91%
POPPIES	-	4JJ	88%
BUTTERCUPS	-	4LM	88%
1RB	88%	HUB 3	78%
1LB	90%	5NM	37%
1OT	42%	5LC	88%
2BT	71%	5MC	86%
2RB	75%	6HC	52%
2JH	50%	6SJ	61%
3DN	54%	6TS	63%
3CC	61%	Total	67%

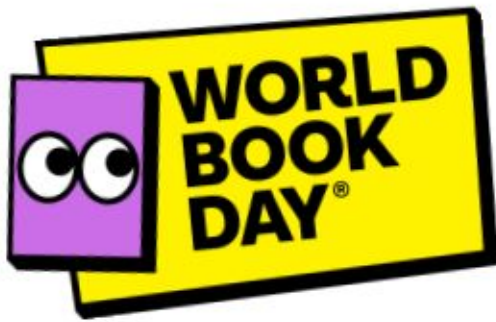
Well done to class 4ML who have the highest reading average this week and to class 2RB who have the most improved score. Please try to read 5 times a week with your child - the results of regular reading make such a difference to them across all subjects in the curriculum.

Don't forget!!!!

Bring your 'Book in a Box' into class on  
Wednesday 4<sup>th</sup> March

Your name and class must be displayed on the  
outside of the box.





Dear Parents and carers,

It's nearly that time of year again - World Book Day is nearly upon us (Thursday 5<sup>th</sup> March) and this year we're doing things slightly differently.

Following on from our successful *No Screen Day* where children spent the day paper crafting Christmas decorations for the whole school, we would like pupils to once again get in touch with their creative side, honing their imaginative talents by creating a 'Book in a Box'.

### What is a 'Book in a Box'?

This is a project for pupils to do at home with their grown-ups on the run up to World Book Day.

A 'Book in a Box' is a creative, hands-on reading project where children select a favourite book, fairy tale or nursery rhyme, and decorate a shoebox to reflect the story, creating an interactive diorama showing characters, settings, or key plot points. This project is to encourage storytelling, paper craft, art and design and literacy skills. Children can be as imaginative as they like to bring their book or story to life using paper and card, paint, fabric, clay/plasticine, paper mache, lego etc.

For example, *Little Red Riding Hood*, *The Gingerbread Man*, *Incy Wincy Spider*, *3 Little Pigs*, or a favourite scene from *Charlie and the Chocolate Factory*, *Room on the Broom*, *Dog Man*, *Matilda*, *How to Train Your Dragon*, *Harry Potter*, *The Darkest Dark* or *Winter's Child* - to name but a few!



Children need to bring their creations into class on **Wednesday 4<sup>th</sup> March**. Pupils will discuss their art work with their classmates before they go on display. Children will also have the opportunity to view everyone's 'Book in the Box' entries on Wednesday 4<sup>th</sup> and Thursday 5<sup>th</sup> March. An extended evening viewing will be available at Wednesdays parents evening on the 4<sup>th</sup> of March.

In addition, we are suggesting that children come in on World Book Day dressed in their pyjamas with their favourite bedtime story that they can share in class.

There will be prizes for the most creative box in each class and prize winners throughout the whole school!

#### Requirements:

- Must fit in a shoe box (or similarly sized box)
- Your child's name and class must be displayed on the outside of the box.

We look forward to seeing your exciting creations!

Thank you for your continued support  
New Brighton Primary School

**Get reading - Get making - Get creating!**







# Attendance

*We aim for 100% our target is 98%*

*Remember that school starts at 8:50am and any time after this is late. Formal lessons start at 9:05 and the children need to be in, registered and settled for this time.*



Class	%	Minutes Late	Class	%	Minutes Late
Nutmeg	88.7	0	3DN	96.8	151
Poppies	92.9	162	4ML	97.5	17
Buttercups	88	36	4LM	92.3	52
Nurture Hub	100	0	4JJ	96.5	161
1RB	98.1	20	HUB 2	93.8	0
1LB	91.8	52	HUB 3	85.2	0
1OT	89.9	66	5NM	90.4	29
2BT	97.2	13	5LC	96.5	86
2RB	94.1	20	5MC	92.8	129
2JH	93.9	243	6HC	98.5	96
HUB 1	90.8	13	6SJ	96.3	122
3LM	96.4	129	6TS	95.4	64
3CC	89.6	35			
<b>Whole School</b>					
<b>Whole School Attendance</b>	<b>94%</b>		<b>Lost Learning</b>	<b>28 HRS</b>	<b>16 MINS</b>

## Reporting a child's absence

Please remember to phone each day to report your child's absence. You can speak to the office staff or leave absence reasons on the answer machine. If reasons are not provided each day, an unauthorised mark will be entered on the register. **Punctuality is also very important, we now have a signing in screen for late arrivers and early leavers at reception.**



# School Promise Awards



These children have been exceptional this week.

<b>Nutmeg</b> Iris	<b>Class 3LM</b> Evelyn
<b>Buttercups</b> Adeline	<b>Class 4JJ</b> Hattie D
<b>Poppies</b> Koah	<b>Class 4LM</b> Tilly E
<b>Class 1RB</b> Dylan	<b>Class 4ML</b> Bonnie
<b>Class 1LB</b> Lily	<b>Class Hub 2</b> Cub
<b>Class 10T</b> Teddy	<b>Class 5LC</b> Morgan
<b>Class 2BT</b> Matthew	<b>Class 5MC</b> Lyla
<b>Class 2JH</b> Evony & Gracie	<b>Class 5NM</b> Mia
<b>Class 2RB</b> Luna	<b>Class Hub 3</b> Zack
<b>Class Hub 1</b> Oscar	<b>Class 6HC</b> Isla
<b>Class 3CC</b> Max	<b>Class 6SJ</b> Evelyn J
<b>Class 3DN</b> Faye	<b>Class 6TS</b> Bradley

