



Meet the Teacher

# Staff



Teaching assistant:  
Miss Maddison



Teacher:  
Miss Burns



Teaching assistant:  
Miss Thompson



# A bit about me.....

Undergraduate degree in Education Studies and Early Years.

Worked as a TA then completed my PGCE Primary and Early Years at the University of Chester.

## My teaching philosophy

### Each child is unique

- Spending time getting to know each child
- Supporting different learning styles and providing individual support when possible
- Celebrating each child's strengths and talents

### Praise over punishment

- Zones of regulation
- Recognition board
- WOW work and proud clouds
- Positive reinforcement
- Celebrating each child's strengths and talents

### Opportunities for exploration

- Continuous and enhanced provision
- Outdoor learning
- Problem solving
- Class and partner discussions
- Imaginative play

# Transition to year 1

Year 1 is a big transition from EYFS for your child.

As Year 1 is the first year of the Primary curriculum, there is a more formal approach to learning required.

Children will be working at tables and completing work in exercise books. Despite this, I am a huge believer that children learn through play. Therefore, lessons are shorter in this first term to ensure children have time after their work to access planned continuous provision activities which extend their learning.

Lessons will be 'hands on' where possible and physical resources will always be available for children to work out answers. The curriculum will be tailored towards an increasing amount of written book work gradually where needed to prepare children for Year 2.



# Morning Routine

## Morning Routine:

Drop off at the door  
Children complete the following  
steps  
Self register using meal selector.



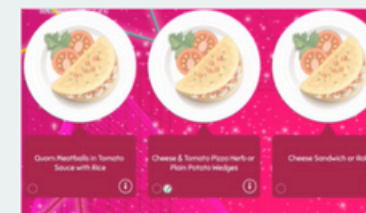
Coat and bag on  
peg



Water in box



Check in



Pick dinner



Whiteboard and  
pen



Sit on carpet

# An example daily timetable

	8:40-9:00	9:00-9.30	9.30-10:30			10:45-11:45			1:00-2:00		2:00-3:00	3-3:20
MON	Register Zone Check In Tricky Words	Phonics	English		Break 10:30 – 10:45	Maths	Number formation	Lunch 12:00– 1:00	Handwri ting			Story
TUE	Register Zone Check In Tricky Words	Assembly	English			Maths	Number formation		PE		Story	
WEDS	Register Zone Check In Tricky Words	Phonics	English			Maths	Number formation		Handwriti ng		Story	
THURS	Register Zone Check In Tricky Words	Phonics	English			Maths	Number formation				Story	
FRI	Register Zone Check In Tricky Words	Phonics	English	Assem bly		Maths	Number formation		PE	Reward time/ Intervention catch ups	Story	



# What we will be learning first

Subject	Autumn Topic
English	Set 1 and 2 sounds Read Write Inc, orally composing sentences, beginning to use capital letters and full stops, leaving spaces between words, discussing and retelling stories.
Maths	Number sense, place value, addition and subtraction (reasoning and problem solving)
Science	Animals including humans, seasonal changes
History	Changes within living memory
Geography	The geography of our school grounds
RE	Christianity What does it mean to belong?
Music	Pulse, rhythm and pitch
Computing	Understanding algorithms
PE	Gymnastics Multi-skills – Focus on ball skills and point scoring games
Art	Self Portraits

# Phonics screening check

Every year in Year 1, a National Phonics Screening Check is issued by the government in the summer term to check children's reading progress across schools in England.

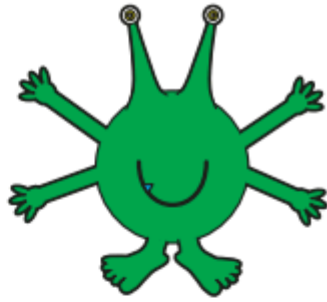
The check contains 40 words that children read. This is 20 real words and 20 "pseudo words" (nonsense words). This is to check their decoding skills for reading.

Again, more information will be provided relating to this closer to the time but this is what the children will see during their phonics screening check.

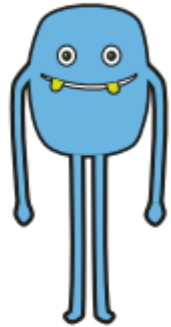


# Phonics screening check

nop



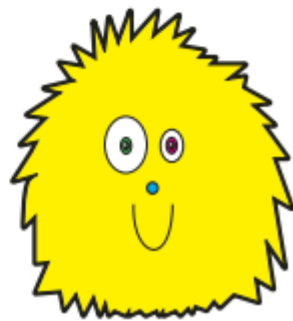
yim



zeg



ild



bar

sneak

curl

doze

relay

ending

dolphin

crackers

# School Uniform PE days and Outdoor Learning

Our school uniform helps children show pride in belonging to our community. It promotes a sense of belonging and ensures equality for all. A smart appearance supports positive attitudes to learning and reflects well on our school to visitors and the public. It also helps prevent pressure over clothing choices.

**Please support us by ensuring your child is dressed correctly for school.**

**On PE days, children should come to school wearing their PE kit** to get the most from their lessons. **For forest school sessions, children will need to wear suitable clothing**, which may vary depending on the season and weather.

Our PE days will be **Tuesday** and **Friday**.

We will share details of when your child will be taking part in forest school sessions nearer the time.



# Behaviour



We place great value on praise and recognition, using every opportunity to promote and reinforce positive behaviour. By celebrating those who go Above and Beyond, we help raise expectations across the whole school.

Children can be recognised in many ways — through praise boards, postcards sent home, positive phone calls, or public displays of excellent work.

We ask for your continued support with our behaviour policy. It's vital that children see a consistent message from both home and school. When things do go wrong, we see it as a chance to teach and guide. Behaviour needs to be learned, modelled, and reinforced with consistent responses from both staff and parents. We always take time to understand what happened and ensure every child has the opportunity to be heard.



# Trips and visitors

To enrich and broaden our children's education, we make the most of our local environment, organise school trips, and invite visitors into school. These experiences play a key role in developing children's character and building their cultural capital.

We understand the cost involved and always aim to give as much notice as possible. Your support in making these opportunities happen is hugely appreciated — they simply wouldn't be possible without it.

This year we are considering the following trips / experiences.

Fun Food Chef  
Walk around our local area  
Chester Zoo





# Reading

One of the most important skills a child can develop is the ability to read. At school, we work hard to promote a love of reading by providing a wide range of books to suit all interests – available throughout the day, even during break times.

Reading is taught as a whole class, but children may also work in small groups or one-to-one with staff if needed.

We ask for your support in encouraging your child to enjoy books and read regularly at home. In Year 1, we send home phonics books on Monday and Friday.

Children also receive a book from school to read and fill in on their reading diary.



# Important information

Monday	Tuesday	Wednesday	Thursday	Friday
Swap RWI book bag book Swap library book	PE			PE Swap phonics reader book

# Important dates

## Autumn term one (September 2025-October 2025)

01.09.25	INSET Day. School closed to pupils.
----------	-------------------------------------

02.09.25	Children return to school
----------	---------------------------

05.09.25	Meet the Teacher (Class information letter distributed)
----------	---

18&19.09.25	Fun Food Chef in School (Yrs. 1-6)
-------------	------------------------------------

22-26.09.25	Scholastic Book Fair in School
-------------	--------------------------------

26.09.25	McMillan Coffee Morning
----------	-------------------------

01.10.25	Harvest Service ks1
----------	---------------------

02.10.25	Autumn term Census
----------	--------------------

03.10.25	Harvest Service ks2
----------	---------------------

27-31.10.25	October Half Term
-------------	-------------------



# Multiplication Tables

Knowing times tables is essential for building a strong foundation in maths. By the end of Year 4 (age 8–9), children in the UK are expected to know all their multiplication tables up to  $12 \times 12$ . This is assessed through the national Multiplication Tables Check (MTC).

In school we introduce and built upon multiplication tables as follows:

**Year 2:** Children begin with the 2, 5, and 10 times tables.

**Year 3:** They move on to the 3, 4, and 8 times tables.

**Year 4:** They focus on fluently recalling all tables up to  $12 \times 12$  in preparation for the MTC.

Regular practice at home is essential to ensure that multiplication tables are learnt and retained. The earlier children are confident with their tables the better. In school we make learning them fun through the use of songs, games, apps, activities and chanting. Practice makes perfect!



# Multiplication Tables Tips

**USE DOUBLES**

**Threes** **x3**  
DOUBLE THEN ADD ONE SET  
 $7 \times 2 = 14$   
 $7 \times 3 = 14 + 7 = 21$

**Fours** **x4**  
DOUBLE then DOUBLE again  
 $4 \times 8$   
 $8 \ 16 \ 32$

**Sixes** **x6**  
TIMES BY 5 THEN ADD ONE MORE SET  
 $5 \times 9 = 45$   
 $6 \times 9 = 45 + 9 = 54$

**Sevens** **x7**  
TIMES BY 5 THEN ADD TWO MORE SETS  
 $5 \times 6 = 30$   
 $7 \times 6 = 30 + 6 + 6 = 42$

**Eights** **x8**  
TIMES BY 10 THEN SUBTRACT TWO SETS  
 $7 \times 10 = 70$   
 $7 \times 8 = 70 - 9 - 9 = 56$

**Nines** **x9**  
TIMES BY 10 THEN SUBTRACT ONE SET  
 $7 \times 10 = 70$   
 $7 \times 9 = 70 - 9 = 63$

**Twelves** **x12**  
TIMES BY 10 THEN ADD TWO SETS  
 $3 \times 10 = 30$   
 $3 \times 12 = 30 + 3 + 3 = 36$

**Fives** **x5**  
TIMES BY 10 THEN HALVE IT  
 $8 \times 10 = 80$   
 $8 \times 5 = \text{Half of } 80 \text{ which is } 40$

**TIMES TABLES CHEAT SHEET**

www.mathsinsider.com

	2	3	4	5	6	7	8	9	10
1	2	3	4	5	6	7	8	9	10
2	4	6	8	10	12	14	16	18	20
3	6	9	12	15	18	21	24	27	30
4	8	12	16	20	24	28	32	36	40
5	10	15	20	25	30	35	40	45	50
6	12	18	24	30	36	42	48	54	60
7	14	21	28	35	42	49	56	63	70
8	16	24	32	40	48	56	64	72	80
9	18	27	36	45	54	63	72	81	90
10	20	30	40	50	60	70	80	90	100

## Top Tips for Learning Your Times Tables

### Interlocking Cubes

Use different coloured cubes to make patterns and 'sticks' of numbers, e.g. to make the 4 times table, make sticks of 4, 8, 12, 16 up to  $4 \times 12$ .

### Fortune Tellers

Make multiplication table fortune tellers and practise with your friends.

### Number Squares

Colour in the pattern of a particular multiplication table on a number square.

### Speed Grids

Try completing some speed grids. You should get faster and more accurate every time.

### Sing

Sing your times tables! Can you sing your times tables to the tune of your favourite song?

### Doubling and Halving

$$2 \times 4 = 8$$

$$4 \times 4 = 16$$

Use doubling and halving to help you. If you know  $2 \times 4$  is 8, then you know  $4 \times 4$  is 16 by doubling!

### Matching Pairs

Create a set of multiplication table question and answer matching pairs cards. Play with your friends and family!

### Online Games

Play times tables games online.



### Practise Everywhere

Practise your multiplication facts at every opportunity, whilst walking to school, in the car or in the bath!



# Seesaw and childrens work

We use Seesaw across the school to share learning and celebrate children's achievements.

Children are encouraged and taught to upload work and activities they're proud of, giving you a window into their day.

They especially love it when you click the heart to show you've seen and appreciated their work!





# Seesaw and communication

The Seesaw app includes a messaging feature that parents can use to contact the class teacher for positive communication or simple, class-based queries.

Please note that Seesaw is **not to be used like WhatsApp or Facebook**. It should **not be used for reporting absences, changes to pick-up arrangements, or to raise concerns about progress or incidents**, for these, please contact the school office by email at [admin@christletonprimary.cheshire.sch.uk](mailto:admin@christletonprimary.cheshire.sch.uk) or call [01244 455288](tel:01244455288) to make an appointment.

Teachers check Seesaw regularly but not while teaching or when off-site, as it's important they have time to switch off. Staff aim to respond to messages within three days.

Any **inappropriate messages or an unsatisfactory tone will not receive a response and may be reported to the headteacher**. Misuse of the messaging feature could result in access being removed.



# Snacks and hydration

## Hydration

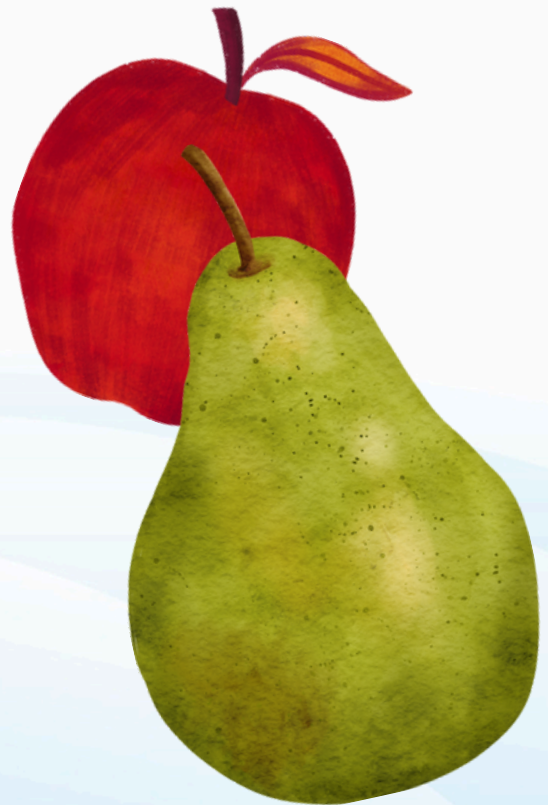
It's **very important that children stay hydrated** throughout the school day. Please **ensure your child brings a named, reusable water bottle**, filled and ready to use, each day.



## Snacks

Fruit is freely available in school for children in EYFS, Year 1, and Year 2 and often for older children too.

All children are welcome to bring in a healthy snack for break time, and we kindly ask parents to be mindful of allergens, especially by avoiding nut-based products. Children in Years 3–6 also have the option to purchase a snack in school during break time.



# Helping at home!

To help your child succeed, we need to work together as partners. Your role as parents is vital. Please support the school by:

- Helping your child with home learning, such as multiplication tables and spellings.
- Encouraging a love of reading by enjoying stories together and ensuring they read at least three times a week.
- Informing us of any significant changes at home that might affect your child.
- Letting us know if your child feels reluctant or worried about coming to school.
- Promoting independence and resilience by allowing your child to solve problems on their own whenever possible.
- Supporting the school's behaviour policy with your words and actions.

Good behaviour is just as important as academic learning, and children need guidance to develop these skills.





# Helping at home!



**Numberblocks**  
Learn how much fun counting can be with the Numberblocks - a fun-loving group of numbers who work together to solve problems big and small.

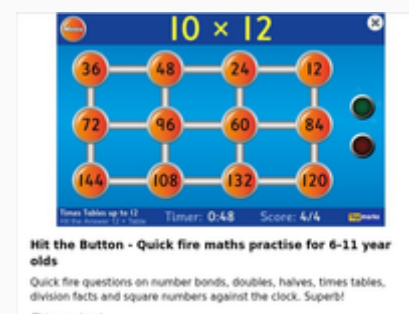
**YouTube:** Numberblocks



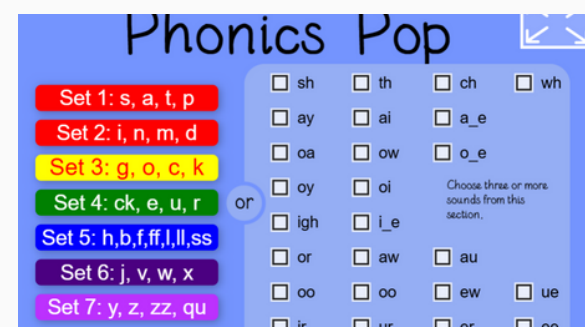
**YouTube:** Let's Get Fit – Count to 100 by 1's



**TopMarks:** Helicopter Rescue



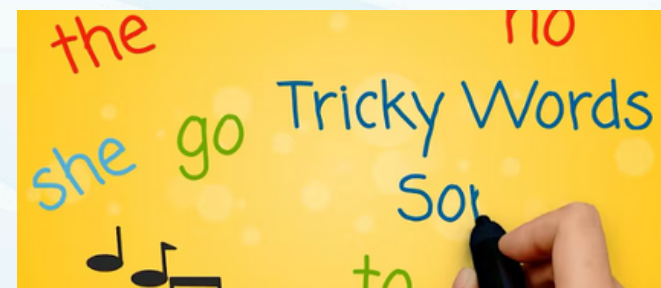
**TopMarks:** Hit the button – Number Bonds



**Ict games:** Phonics Pop



**Ict games:** Forest Phonics



**YouTube:** Tricky words Song



**Ict games:** Sound Sayer

**Most importantly:**

Please let us know if there are any changes at home that may be affecting your child so that we can support them.

Please also let us know if your child is struggling or reluctant to come to school so that we can talk to your child and reduce any anxieties.



# The School Website

Our school website is a valuable source of information for parents.

Alongside the school calendar with key dates, you'll find newsletters, details about the curriculum and learning, and a range of useful resources to help support your child at home.

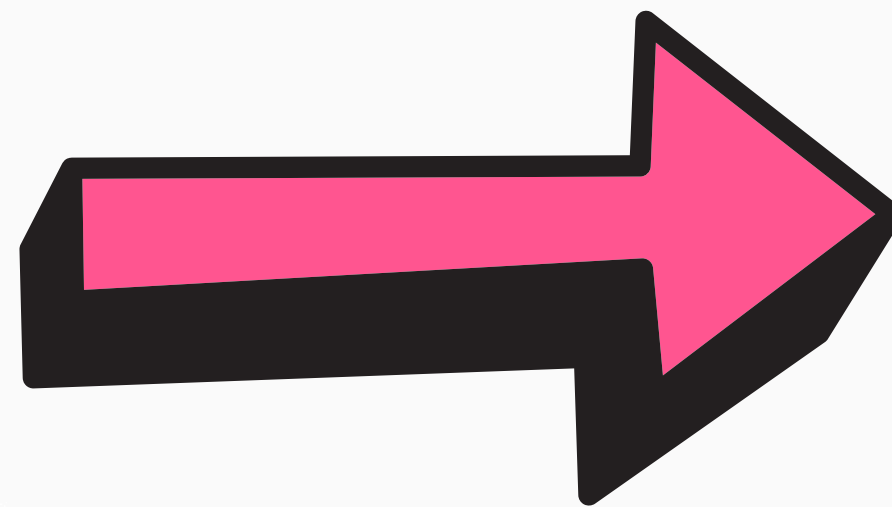
We encourage you to check the website regularly to stay up to date.



# X and Insta

Recognising the changes in how social media is used and the challenges schools now face with Twitter (X), we will be moving to Instagram this academic year.

Keep an eye out for more information, we'd love you to follow us and stay connected!






# Attendance and Absence

Good attendance is essential for children to make the most of their learning, opportunities, and development. We're proud to work closely with families to ensure children attend regularly, are well prepared, and arrive on time.

If your child is absent, please inform the school by calling the office on 01244 455288. We will follow up on any unexplained absences.

In line with DfE guidance, requests for leave during term time can only be approved in exceptional circumstances, as education must remain the priority.

Further details on illness and absence can be found on our school website under the Parents tab.

Attendance	Days lost	Weeks lost	Impact	
100.0%	0	  1 week	Your child attends school and is able to take full advantage of every learning opportunity	
99.0%	1.9			
98.0%	3.8			
97.0%	5.7			
96.0%	7.6			
95.0%	9.5	2 weeks	Your child's absences may result in them falling behind in school.  They may need to spend time catching up with missed work	
94.0%	11.4			
93.0%	13.3	  3 weeks		
92.0%	15.2			
91.0%	17.1			
90.0%	19	  4 weeks		Your child's absences will be having an effect on their education.  Your child will be at risk of underachieving and may need extra support from you to catch up with their school work.
89.0%	20.9			
88.0%	22.8	5 weeks		
87.0%	24.7			
86.0%	26.6			
85.0%	28.5	  6 weeks	Your child's has poor attendance.  It is likely that there will be a significant impact on their learning.	
84.0%	30.4			
83.0%	32.3	7 weeks		
82.0%	34.2			
81.0%	36.1			
80.0%	38			

# Any Questions

If you have any questions, please don't hesitate to ask.

We want to get this right for your child just as much as you do.

If you think of something after today, feel free to send us a message on Seesaw, email us, or call the school at [01244 455288](tel:01244455288).

