



MEET THE TEACHER

MISS BUTTERFIELD, ROBIN CLASS

MEET THE STAFF



MISS BUTTERFIELD
CLASS TEACHER



MRS CARR
CLASS TEACHER
(MATERNITY COVER)
(Y1)



MRS CAMPBELL
CLASS TEACHER (FROM
JAN 26) (Y1)



MRS SISSON
HIGHER LEVEL
TEACHING ASSISTANT



MRS BUCKLEY
TEACHING ASSISTANT (MONDAY TO THURSDAY)



MISS SERVICE
TEACHING ASSISTANT (FRIDAY)



RECEPTION TIMETABLE -

RECEPTION SESSIONS ARE A MAXIMUM OF 15 MINUTES LONG, WITH SMALL GROUP ACTIVITIES RUNNING DURING CONTINUOUS PROVISION (PLAYING) TIME.

	MONDAY Mixed class before 9am and after 12:45pm	TUESDAY Mixed class before 9am and after 12:45pm	WEDNESDAY Mixed class before 9am and after 12:45pm	THURSDAY Mixed class before 9am and after 12:45pm	FRIDAY Mixed class before 9am and after 12:45pm
8:45 – 9:00	Start of Day Maths, Register and Prayers	Start of Day Maths, Register and Prayers	Start of Day Maths, Register and Prayers	Start of Day Maths, Register and Prayers	Start of Day Maths, Register and Prayers
9:00 - 9:30	Reception Phonics	Reception Phonics	Reception Phonics	Reception Phonics	ASSEMBLY
9:30 -10:30	Reception Maths	Reception Maths	Reception Maths	Reception Maths	Reception Maths/Phonics
10:30 -10:45	BREAK	BREAK	BREAK	BREAK	BREAK
10:45 -11:45	Reception Literacy	Reception Literacy	Reception Literacy	Reception Literacy	Reception Literacy
11:45 - 12:45	LUNCH	LUNCH	LUNCH	LUNCH	LUNCH
12:45 - 13:00	'Understanding the World' carpet input	Whole Class Story Time	Whole Class Story Time	Whole Class Story Time	Religious Education carpet input
13:45 -14:30	'Understanding the World' linked activity in provision	Forest School	Art/Design Technology carpet input Art/Design Technology linked activity in provision	PSHRE carpet input PSHRE linked activity in provision	Religious Education linked activity in provision
14:30 -14:45	BREAK	BREAK	BREAK	BREAK	BREAK
14:45 -15:30	Teacher-led ASSEMBLY My Happy Mind	Forest School	Physical Education	Songs of Praise ASSEMBLY R.E	Music/French carpet session



YEAR 1 TIMETABLE

	MONDAY Mixed class before 9am and after 12:45pm	TUESDAY Mixed class before 9am and after 12:45pm	WEDNESDAY Mixed class before 9am and after 12:45pm	THURSDAY Mixed class before 9am and after 12:45pm	FRIDAY Mixed class before 9am and after 12:45pm
8:45 – 9:00	Start of Day Maths, Register and Prayers	Start of Day Maths, Register and Prayers	Start of Day Maths, Register and Prayers	Start of Day Maths, Register and Prayers	Start of Day Maths, Register and Prayers
9:00 - 9:30	Year 1 Phonics	Year 1 Phonics	Year 1 Phonics	Year 1 Phonics	ASSEMBLY
9:30 -10:30	Year 1 Writing	Year 1 Writing	Year 1 Writing	Year 1 Writing	Year 1 Writing
10:30 -10:45	BREAK	BREAK	BREAK	BREAK	BREAK
10:45 -11:45	Year 1 Maths	Year 1 P.E	Year 1 Maths	Year 1 Maths	Year 1 Maths
11:45 - 12:45	LUNCH	LUNCH	LUNCH	LUNCH	LUNCH
12:45 - 13:15	Guided Reading Group sessions	Guided Reading Group sessions	Guided Reading Group sessions	Guided Reading Group sessions	Religious Education
13:15 -14:30	History/Geography	Year 1 Maths	Art/Design Technology	Religious Education	PSHRE/Computing
14:30 -14:45	BREAK	BREAK	BREAK	BREAK	BREAK
14:45 -15:30	Teacher-led ASSEMBLY	Year 1 Science	Physical Education	Songs of Praise ASSEMBLY	Music/French
	My Happy Mind			R.E	

P.E

RECEPTION P.E DAYS ARE WEDNESDAYS, AND Y1 P.E DAYS ARE TUESDAYS AND WEDNESDAYS. PLEASE SEND YOUR CHILD DRESSED IN THEIR P.E KIT, WITH THEIR JUMPER OR CARDIGAN AS THE TEMPERATURE STARTS TO DROP.

IT IS SUGGESTED THAT GIRLS WEAR SHORTS UNDER DRESSES IF THEY ARE NOT WEARING TIGHTS, FOR COMFORT WHEN SITTING OR PLAYING.

PE Kit

All sportswear must be plain and free of logos, apart from the St. Monica's logo where applicable

White t shirt

Black shorts

Navy or black sweatshirt and jogging pants.

Black plimsolls

Trainers



FOREST SCHOOL

RECEPTION HAVE FOREST SCHOOL SESSIONS WITH MRS DAILEY EVERY TUESDAY IN THE AUTUMN TERM. YEAR 1 WILL HAVE THEIR FOREST SCHOOL SESSIONS WITH ROBIN CLASS IN THE SUMMER TERM.

CHILDREN SHOULD COME TO SCHOOL ON THEIR FOREST SCHOOL DAYS WEARING:

- DARK, PLAIN CLOTHES WHICH COVER ARMS AND LEGS, E.G LONG SLEEVED TOPS AND LEGGINGS OR JOGGING BOTTOMS
- OLD, COMFORTABLE CLOTHES THAT THEY DON'T MIND GETTING MUDDY OR WET!
- THEIR P.E TRAINERS, AND BRING WELLINGTON BOOTS TO KEEP AT SCHOOL
- ADDITIONAL CLOTHING SUITABLE TO THE WEATHER THAT DAY I.E SUNCREAM AND HATS, WATERPROOF COATS/SUITS, GLOVES



SNACK

FRUIT IS AVAILABLE DAILY FOR CHILDREN – THE SELECTION CAN BE LIMITED SO IF YOU WOULD RATHER SEND YOUR CHILD WITH THEIR OWN SNACK THIS IS FINE. THESE **MUST** BE NUT-FREE.

AT ST MONICA'S WE ENCOURAGE THE CHILDREN TO BRING IN HEALTHY SNACKS AT BREAK TIMES- FRESH FRUIT/VEGETABLES, BREAD BASED PRODUCTS, LOW/NO SUGAR SNACKS.

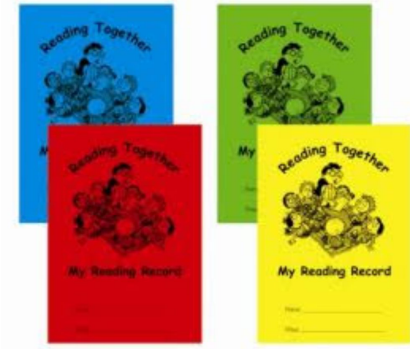
LUNCH

IN KEY STAGE ONE, EVERY CHILD IS ENTITLED TO A FREE SCHOOL MEAL. IF YOUR CHILD PREFERS A PACKED LUNCH, PLEASE ENSURE IT IS HEALTHY AND WILL SUSTAIN THEM THROUGHOUT THE REST OF THE SCHOOL DAY.



READING

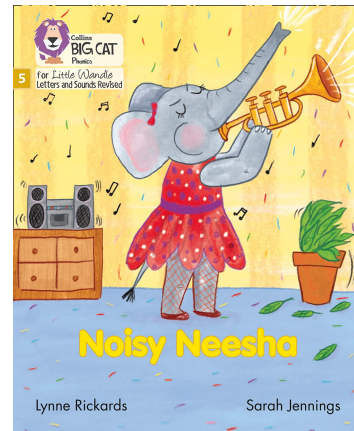
FOR **RECEPTION**, YOUR CHILD'S READING JOURNEY WILL BEGIN WITH 'SHARING BOOKS', WHICH WILL START ON THURSDAY 11TH SEPTEMBER. YOUR CHILD WILL CHOOSE A BOOK FROM OUR RECEPTION BOOK CORNER FOR YOU TO READ AT HOME TOGETHER, TALKING ABOUT ANY RHYMING WORDS, FEELINGS OF CHARACTERS, PREDICTING WHAT WILL HAPPEN NEXT ETC.



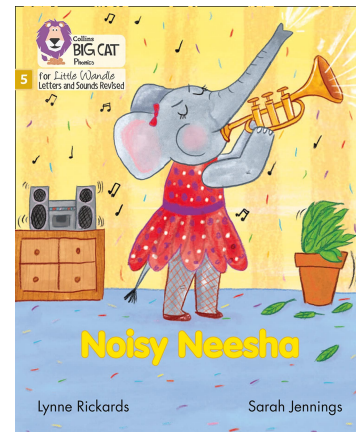
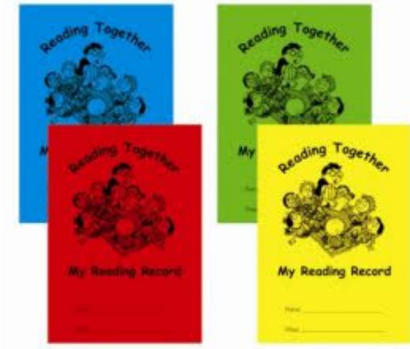
CHILDREN WILL START THEIR 'GUIDED READING' SESSIONS WEEK BEGINNING 6TH OCTOBER, WHERE THEY WILL HAVE A BOOK WITH NO WORDS OR FEW WORDS INITIALLY. THIS IS MATCHED TO WHAT YOUR CHILD CAN CONFIDENTLY READ. THEY WILL READ THESE THREE TIMES IN SCHOOL, AND PLEASE LOOK AT THEM WITH YOUR CHILD AGAIN AT HOME TOO.



I OPERATE A 'ONE OUT, ONE IN' SYSTEM. IF YOUR CHILD DOES NOT RETURN THEIR READING BOOK AND DIARY TO SCHOOL BY **THURSDAY**, I WILL NOT SEND THEIR NEXT BOOK HOME. THEY WILL STILL READ IT 3 TIMES AT SCHOOL.



READING



AT ST MONICA'S, WE FOLLOW THE LITTLE WANDLE SCHEME FOR PHONICS AND EARLY READING. IN OUR 3 GUIDED READING SESSIONS, WE READ A BOOK THAT IS MATCHED DIRECTLY TO YOUR CHILD'S READING LEVEL, AND FOCUS ON DECODING, EXPRESSIVE READING, AND COMPREHENSION.

THESE SAME BOOKS ARE SENT HOME ON A **THURSDAY** WITH A COMMENT ON HOW YOUR CHILD HAS READ THAT WEEK. THEY SHOULD BE ABLE TO READ WITH FLUENCY, ACCURACY AND EXPRESSION BY THIS TIME. PLEASE WRITE IN ANY COMMENTS YOU HAVE WHEN YOU HEAR YOUR CHILD READ. WE WOULD ASK THAT READING DIARIES AND BOOKS ARE RETURNED TO SCHOOL EVERY **TUESDAY** FOR OUR GUIDED SESSIONS, YOU WILL THEN RECEIVE THESE BACK EVERY **THURSDAY**.

HOMework


WE ARE STARTING TO INTRODUCE THE HOMEWORK ROUTINES THAT WILL BECOME MORE INDEPENDENT AS THE CHILDREN MOVE THROUGH SCHOOL. THE WEEKLY EXPECTATIONS ARE:

- READING ALOUD 3 TIMES A WEEK +.
- PHONICS HOMEWORK SHEET ON NEW SOUNDS/WORDS.
- MATHS KEY SKILLS PRACTICE I.E WORKSHEET, NUMBOTS/HIT THE BUTTON

EACH HALF TERM I MAY SET A WIDER CURRICULUM HOMEWORK BASED ON THE LEARNING WE HAVE DONE IN OUR FOUNDATION SUBJECTS LIKE SCIENCE, HISTORY AND GEOGRAPHY.

ALL HOMEWORK WILL BE SET ON **GOOGLE CLASSROOM** ON A **FRIDAY** AS AN ASSIGNMENT WHICH YOU CAN MARK AS COMPLETED. I CAN LEAVE A COMMENT TOO. IF YOU NEED PRINTED SHEETS PLEASE LET ME KNOW AND I WILL PROVIDE THESE EACH WEEK. INFORMATION ON HOW TO GET ONTO GOOGLE CLASSROOM WILL BE GIVEN OUT TONIGHT.



Little Wandle - Letters and Sounds Year 1 Phonics Home Learning				
Phase 3 & 4 (review) / Phase 5 - Autumn 1 Week 3 Focus - Review Phase 4 / Longer words				
Please support your child to practise and reinforce the phonemes and graphemes we are learning in school. More information and support can be found on the Little Wandle website - https://www.littlewandlelettersandsounds.org.uk/resources/for-parents/				
Phonemes we will be focusing on this week in school -				
ai	ee	igh	oa	oo
ar	or	ur	oo	ow
oi	ear	air	er	
We will be reading and writing words. Can you see this week's focus phonemes?				
snack	springs	tree	driftwood	
starfish	steep	shrill	bench	
chimp	thinks	appear	spoon	
We will be reading and writing sentences. Can you spot any tricky words? Can you see this week's focus phonemes? Can you read these sentences fluently?				
The frog slept in the drum.				
Splat, the chimp chuck a plum.				
The bright light was floating in the air.				
Are you sure the train went to the windmill?				
We will be practising tricky words. Can you spot the tricky part of the word?				
was	they	some	come	were
there	sure	pure		
We will be spelling words. Can you write these words? Can you use the correct phonemes?				
drum	splat	green	train	

THE PHONICS SCREENING

THE NATIONAL PHONICS SCREENING CHECK IS A STATUTORY ASSESSMENT THAT WAS INTRODUCED IN 2012 TO ALL YEAR 1 PUPILS AND IS A QUICK AND EASY CHECK OF YOUR CHILD'S PHONICS KNOWLEDGE.

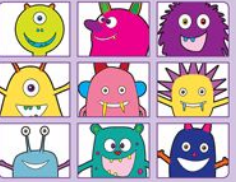
WHO IS IT FOR?

ALL YEAR 1 PUPILS WILL TAKE THE PHONICS SCREENING CHECK IN JUNE, AT THE START OF THE SECOND HALF OF THE SUMMER TERM.

IT COMPRISES OF A LIST OF 40 REAL WORDS AND NONSENSE (PSEUDO) WORDS. IT WILL ASSESS PHONICS SKILLS AND KNOWLEDGE LEARNT IN RECEPTION AND YEAR 1. YOUR CHILD WILL READ ONE TO ONE WITH ME. YOUR CHILD WILL READ UP TO 4 WORDS PER PAGE AND THEY WILL PROBABLY DO THE CHECK IN 10-15 MINUTES. THEY WILL BE ASKED TO 'SOUND OUT' A WORD AND BLEND THE SOUNDS TOGETHER. THE CHECK IS VERY SIMILAR TO TASKS THE CHILDREN ALREADY COMPLETE DURING PHONICS LESSONS.

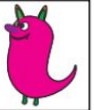
WHAT ARE NONSENSE OR PSEUDO WORDS AND WHY ARE THEY INCLUDED?

THESE ARE WORDS THAT ARE PHONETICALLY DECODABLE BUT NOT ACTUAL WORDS WITH AN ASSOCIATED MEANING E.G. BRIP, SNORB. THESE WORDS ARE INCLUDED IN THE CHECK SPECIFICALLY TO ASSESS WHETHER YOUR CHILD CAN DECODE A WORD USING PHONIC SKILLS AND NOT THEIR MEMORY. THE PSEUDO WORDS WILL BE SHOWN TO YOUR CHILD WITH A PICTURE OF AN ALIEN. THIS WILL MAKE THE CHECK A BIT MORE FUN. CRUCIALLY IT DOES NOT PROVIDE ANY CLUES, SO YOUR CHILD HAS TO BE ABLE TO DECODE IT.



Section 2

brend



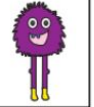
throst



stret



spraw



Section 2

label

vanish

blossom

thankful

PICK UP ARRANGEMENTS

PLEASE LET ME KNOW IF THERE ARE REGULAR PICK-UP ARRANGEMENTS THAT DIFFER FROM YOURSELVES- IF I HAVE MET THEM SO FAR, THEY ARE ON MY LIST! IF THERE ARE LAST MINUTE ARRANGEMENTS, PLEASE LET THE OFFICE KNOW AND THEY WILL TELL ME AND MAY GIVE A PASSWORD IF IT'S THE FIRST TIME WE HAVE MET.

PLEASE TAKE HOME TONIGHT:

RECEPTION PARENTS: GETTING INTO GOOGLE CLASSROOM AND LOG IN DETAILS, WELCOME AND CURRICULUM SHEET FOR AUTUMN 1

YEAR 1 PARENTS: WELCOME AND CURRICULUM SHEET FOR AUTUMN 1

