

School Calendar 2023-2024



St. Catherine's
R.C. Primary School

'Be who God wants you to be and so set the world on fire'

Autumn Term 2023

September

M	T	W	T	F	S	S
				1	2	3
4	5	6	7	8	9	10
11	12	13	14	15	16	17
18	19	20	21	22	23	24
25	26	27	28	29	30	

October

M	T	W	T	F	S	S
					1	
2	3	4	5	6	7	8
9	10	11	12	13	14	15
16	17	18	19	20	21	22
23	24	25	26	27	28	29
30	31					

November

M	T	W	T	F	S	S
			1	2	3	4
5	6	7	8	9	10	11
12	13	14	15	16	17	18
19	20	21	22	23	24	25
26	27	28	29	30		

December

M	T	W	T	F	S	S
				1	2	3
4	5	6	7	8	9	10
11	12	13	14	15	16	17
18	19	20	21	22	23	24
25	26	27	28	29	30	31

Spring Term 2024

January

M	T	W	T	F	S	S
1	2	3	4	5	6	7
8	9	10	11	12	13	14
15	16	17	18	19	20	21
22	23	24	25	26	27	28
29	30	31				

February

M	T	W	T	F	S	S
			1	2	3	4
5	6	7	8	9	10	11
12	13	14	15	16	17	18
19	20	21	22	23	24	25
26	27	28	29			

March

M	T	W	T	F	S	S
				1	2	3
4	5	6	7	8	9	10
11	12	13	14	15	16	17
18	19	20	21	22	23	24
25	26	27	28	29	30	31

April

M	T	W	T	F	S	S
1	2	3	4	5	6	7
8	9	10	11	12	13	14
15	16	17	18	19	20	21
22	23	24	25	26	27	28
29	30					

Summer Term 2024

May

M	T	W	T	F	S	S
		1	2	3	4	5
6	7	8	9	10	11	12
13	14	15	16	17	18	19
20	21	22	23	24	25	26
27	28	29	30	31		

June

M	T	W	T	F	S	S
					1	2
3	4	5	6	7	8	9
10	11	12	13	14	15	16
17	18	19	20	21	22	23
24	25	26	27	28	29	30

July

M	T	W	T	F	S	S
					1	2
3	4	5	6	7	8	9
10	11	12	13	14	15	16
17	18	19	20	21	22	23
24	25	26	27	28	29	30

August

M	T	W	T	F	S	S
					1	2
3	4	5	6	7	8	9
10	11	12	13	14	15	16
17	18	19	20	21	22	23
24	25	26	27	28	29	30
31						

Term Dates

- | | | | |
|------------------------------|---------------------------|---------------------------|------------------------------|
| Monday 4th September 2023 | INSET Day (School Closed) | Monday 26th February 2024 | School Opens |
| Tuesday 5th September 2023 | INSET Day (School Closed) | Thursday 28th March 2024 | School Closes |
| Wednesday 6th September 2023 | School Opens | Wednesday 10th April 2024 | School Opens |
| Friday 20th October 2023 | School Closes | Monday 6th May 2024 | Bank Holiday (School Closed) |
| Monday 30th October 2023 | School Opens | Friday 24th May 2024 | School Closes |
| Thursday 21st December 2023 | School Closes | Monday 10th June 2024 | School Opens |
| Friday 22nd December 2023 | INSET Day (School Closed) | Friday 28th June 2024 | INSET Day (School Closed) |
| Monday 8th January 2024 | School Opens | Wednesday 24th July 2024 | School Closes |
| Friday 16th February 2024 | School Closes | Thursday 25th July 2024 | INSET Day (School Closed) |

Important Dates

September 2023

- 4th and 5th: INSET Days (school closed)
6th: School opens
Core Value this half-term: **Respect**
6th - 8th: Mission and Vision/
Rights Respecting Week
7th: Whole School Mass (KS1 and KS2) - 9.15am
13th: Meet the Teacher parent event
(Years 1-6) 4.45 - 6pm
20th: Class 14 Worship
21st: Reception/Year 1 Reading and Phonics
parent meeting - 5pm
21st: Year 5 Spanish Exchange
parent meeting - 5pm
21st: Year 6 Robin Wood parent meeting - 5pm
27th: Class 12 Worship

October 2023 (Black History Month)

Autumn term parent meetings

- 2nd - 6th: Other Faiths Week
4th: Class 10 Worship
6th: Rosary Service - 8.35am (families invited)
11th: Class 8 Worship
13th: Rosary Service - 8.35am (families invited)
17th and 18th: Parent Meetings (afternoon/
evening sessions)
18th: Class 13 Worship
18th: PTA Bag2School Collection
20th: Rosary service - 8.35am (families invited)
20th: International Day
20th: School closes for half-term
30th: School re-opens
Core Value this half-term: **Love**
31st: School photos

November 2023

- 1st: School photos
1st: Whole School Mass (KS1 and KS2) -
All Saints Day - 9.15am
8th: Class 11 Worship
10th: Remembrance Day
13th: Anti-Bullying Week - Odd Socks Day
13th - 17th: Anti-Bullying Week
17th: EYFS Open Afternoon
(prospective parents) - 1.45pm
13th - 15th: Year 6 residential trip to Robin Wood
14th and 16th: EYFS Stay and Play Sessions
(Reception 8.15-8.45am and Nursery 2.15-3pm)
15th: Class 7 Worship
20th - 29th: Year 5 Bikeability sessions
22nd: Class 9 Worship
23rd: EYFS Open Morning
(prospective parents) - 9.30am

December 2023

- 1st: Advent services in school
1st: Parent Christmas crafts sessions - 2pm
5th: Whole School Mass (KS1 and KS2) -
Advent - 9.15am
12th and 14th: EYFS Nativity - 9.30am
18th: Year 2 Nativity - 2pm
19th: Whole School Mass (KS1 and KS2) - 9.15am
20th: PTA Christmas Jumper Day
20th: Year 1 Christmas Carols 2pm
21st: Christmas Carols in Church (KS1 and KS2)
21st: School closes for Christmas
22nd: INSET Day (school closed)

January 2024

- 8th: School re-opens
Core Value this half-term: **Perseverance**
9th: Whole School Mass (KS1 and KS2) -
Epiphany - 9.15am
11th: EYFS Open Morning
(prospective parents) - 9.30am
16th and 18th: EYFS Stay and Play Sessions
(Reception 8.15-8.45am and Nursery 2.15-3pm)
17th: Class 12 Worship
17th: Parent Drop-Ins (Years 1-6) - 3.15-3.45pm
18th: Parent Drop-Ins (Years 1-6) - 8.15-8.45am
22nd - 26th: Other Faiths Week
24th: Class 10 Worship
26th: PTA Bag2School Collection
29th - 2nd Feb: Storytelling Week
31st: Class 8 Worship
31st: Bed Time Stories - 4.30-5.30pm
(PTA tea and coffee for parents)

February 2024

- 5th - 9th: Children's Mental Health/
Online Safety Week
7th: Class 11 Worship
13th: Class 3 Worship
14th: Ash Wednesday Mass (KS2) - 9.15am
14th: PTA Valentine's Celebrations
15th: Year 6 SATs parent meeting - 5pm
16th: School closes for half-term
26th: School re-opens
Core Value this half-term: **Faith**

March 2024

Annual school reports issued

- 6th: Class 4 Worship
7th: World Book Day
8th: Reception Mother's Day Crafts - 2pm
11th: Science, Technology, Engineering and
Maths (STEM) Day
11th and 12th: Reception Bikeability sessions
13th: Class 5 Worship
15th: Whole School Mass - St. Patrick's Day
- 9.15am - followed by refreshments and
celebrations in the school hall
15th: PTA St Patrick's Day celebrations
20th: Class 6 Worship
22nd: Parent Easter crafts sessions
(all year groups) - 2pm
25th - 28th: Holy Week
26th: Whole School Mass - Holy Week - 9.15am
28th: School closes for Easter

April 2024

Year 5 Spanish Exchange trip to Nigrán

- 10th: School re-opens
Core Value this half-term: **Compassion**
19th: Reception Grandparents Afternoon - 2pm
23rd: PTA St George's Celebrations
23rd and 25th: EYFS Stay and Play Sessions
(Reception 8.15-8.45am and Nursery 2.15-3pm)
24th: Class 9 Worship
26th: PTA Break the Rules Day
26th: PTA Bag2School Collection
29th: St Catherine of Siena Day
29th: Whole School Mass - St Catherine
of Siena - 9.15am

May 2024

Spanish Exchange Trip: visit from children in
Nigrán, Spain to Manchester

- 1st: Class 7 Worship
3rd: Rosary Service - 8.35am
6th: May Bank Holiday (school closed)
8th: Class 3 Worship
9th: Whole School Mass - Ascension - 9.15am
10th: Rosary Service - 8.35am (families invited)
13th - 16th: Year 6 SATs (national assessments)
17th: Pentecost Party
17th: Parent Pentecost crafts sessions
(all year groups) - 8.45-9.45am
22nd: Class 4 Worship
24th: Rosary Service - 8.35am (families invited)
24th: PTA Rainbow Hamper Day
(own clothes day)
24th: School closes for half-term

June 2024

Year 1 Phonics Screening and Year 4
Multiplication Check (national assessments)
June/July - Sports Day (to be confirmed)

- 10th: School re-opens
Core Value this half-term: **Inspiration**
14th: Reception Father's Day Crafts - 2pm
19th: Class 5 Worship
24th: EYFS New Parent Meetings (Nursery 5pm
and Reception 6pm)
26th: Class 6 Worship
26th: EYFS Sports Day - 2pm
28th: INSET Day (school closed)

July 2024

Summer term parent meetings
June/July - Sports Day (to be confirmed)
Year 6 Play, Leavers' Mass and Leavers' Party

- 3rd: Nursery Worship - 2.15pm
10th and 11th: Parent Meetings (afternoon/
evening sessions)
10th: Class 1 Worship
12th: PTA Bag2School Collection
17th: Class 2 Worship
23rd: Whole School Mass - 9.15am
24th: PTA Prosecco and ice cream
24th: School closes for summer
25th: INSET Day (school closed)

Attendance Contact

Call before 8.45am on 0161 445 6359
admin@st-catherines.manchester.sch.uk
or log your child's absence on ParentMail.

Keep Updated

Scan the QR code to visit our website
www.st-catherines.manchester.sch.uk



Our School Day

Nursery

Parents should walk children to the Nursery door across the main playground. Doors will open at 8.45am, ready for an 8.50am start. Children can then be collected at 3pm from the Nursery door.

Reception, KS1 and KS2

The school gates open at 8.35am and children walk to their classrooms across the main playground.

Children must be in their classrooms by 8.45am, ready for registration. If children arrive after this time, parents and carers must take children to the school office.

Children finish school at 3.15pm. Parents and carers can come onto the school playground just before this time and pick up their child from the playground (Years 2 - 6) or their classroom (Reception and Year 1).

Appointments and Early Pick-Ups

We ask parents and carers to please refrain from booking medical and dental appointments in school time. If you do need to pick up your child early, where this is essential, we will require advance notice and a copy of your child's medical/dental appointment.

Attendance and Punctuality

Good attendance and punctuality are vital to your child's education. It is imperative that all children are in school on time and are present in school every day unless they are unwell.

Absence

If your child is sick, parents and carers are responsible for letting the school know each day they are absent.

Please log your child's absence on ParentMail (preferred option) or telephone the school office on 0161 445 6359. This must be done by 8.45am. If you do not contact school by this time, your child may be marked with an unauthorised absence.

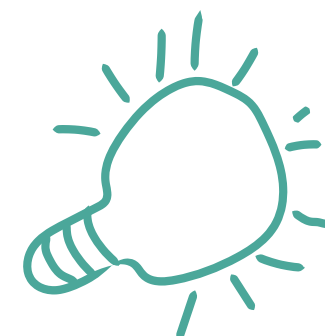
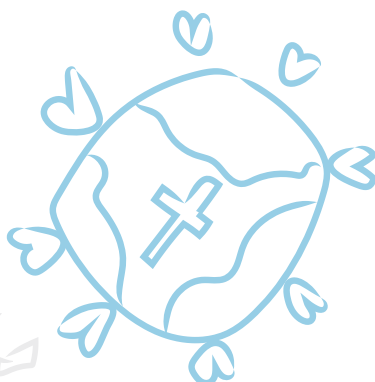
If you do not contact school to inform staff about your child's absence, a staff member may conduct a home visit, in line with our attendance policy and Local Authority guidance, as this is a safeguarding concern.

Holidays and Leave of Absence

The law does not give any entitlement to parents to take their child on holiday during term-time. Any application for leave must be exceptional circumstances. If this is not adhered to, the Local Authority may take legal action. This can be in the form of a fine or in the case of repeated absence, a custodial sentence. Unauthorised absence is likely to result in a fine by the Local Authority.

Contact Details

0161 445 6359
admin@st-catherines.manchester.sch.uk



What our parents and carers say about St. Catherine's



"St Catherine's is friendly, nurturing, makes learning fun and feels welcoming to parents and children."

"There is a beautiful community spirit about St Catherine's."

"It feels like a community and my children are happy, safe and cared for as well as being supported to achieve their academic objectives."

"We feel lucky to have found this school."

"It's a home away from home where all school staff know and care for the children."

"What makes St. Catherine's special? The pastoral side of teaching. The focus on spirituality and well-being. The safeguarding and value driven culture. I'm so pleased with the school."

"My child has come on leaps and bounds at St. Catherine's, so I know he's in the right place."



St. Catherine's
RC Primary School

School Mission, Vision and Core Values

Our school community is rooted in the Gospel and the vision of St. Catherine of Siena. This inspires each of us to 'Be who God wants us to be and so set the world on fire'.

We are called to love one another as we seek to be the best in all that we learn and do. We celebrate and nurture the gifts, talents and skills of everyone. We commit ourselves to grow together in faith, love and service. Inspired by the word of God, we continually strive to be the best Catholic school we can be. Within a stimulating and nurturing environment, we welcome and support one another; reach out within our community and beyond; work together to live out the Gospel values in every aspect of our life at St. Catherine's.

We aim to:

- Shape the whole person
- Strive for excellence
- Create inspiring learning spaces
- Build community

RESPECT

Our Core Values of **respect, love, perseverance, faith, compassion and inspiration** underpin our school mission and vision. They are key to our school community and we encourage everyone to demonstrate these values at every opportunity.

PERSEVERE

FAITH

LOVE

INSPIRATION

COMPASSION