



YEAR 6 RESIDENTIAL 2024

CONDOVER HALL

WHY CONDOVER?

WHY CHOOSE JCA?

- We have been perfecting our centres and activities for 25 years.
- Unique to JCA, one dedicated and multi-skilled instructor spends the week with each group, building confidence, trust and support.
- Expert water sports and specialist activity instructors are also supporting groups subject to final itinerary
- We only employ and train the best - dedicated, motivated, fun and caring staff.
- Full-board accommodation, insurance and all equipment is included.
- We offer an easy payment plan and savings cards to budget for the trip.
- We are fully bonded members of ABTA, guaranteeing protection.
- Our team is dedicated to improving the development and learning of children.

WHY CONDOVER?

THE VALUE OF JCA

We believe that learning outside the classroom is essential to a well-rounded education. Our courses focus on engaging students, providing enjoyable learning, and helping to develop life skills, such as:

- Learning to work together as a team
- Achieving personal and team goals
- Increasing self-esteem and confidence
- Conquering fears
- Trying new and exciting activities
- Experiencing living away from home
- Respecting and valuing each others abilities
- Revealing undiscovered strengths
- Solving problems and taking responsibility

WHY CONDOVER?

NATIONAL CURRICULUM COVERAGE

Our programmes are linked to the Key Stages 2, 3 and 4 of the National Curriculum. Our standard activity package offers the opportunity to cover aspects of:

- PE
- PSHE
- Literacy
- Science
- Geography
- Citizenship
- Design & Technology
- Maths



WHY CONDOVER?

“For the twelfth consecutive year your team leaders went beyond what was expected to ensure our learning outcomes were met and our students had as memorable time as possible. Thank you – and see you next year!”

Hayes School

“It has been wonderful to see the children breaking personal barriers, inspired by the confidence of the staff and instructors have given them. I cannot recommend you highly enough for this week – Thank you.”

Clifford Primary School

“Thank you for an excellent week, we all thoroughly enjoyed our time with you. We were able to achieve new things, conquer fears and build up positive relationships with each other.”

Kingsfield Primary

WHY CONDOVER?

Near Shrewsbury in the West Midlands, Condover Hall boasts a range of facilities and innovative activities, including:



- High aerial trek
- High and low rope courses
- On-site lake and wildlife lake
- Indoor sports hall for 250 people with changing rooms and showers
- Indoor swimming pool between 0.8m and 1.2m depth
- Four all-weather sports courts
- Indoor laser maze
- Indoor games room
- Indoor dance studio with mirror for 30 people

- 80-seat cinema room with a stage for films, presentations and workshops
- Classrooms with capacity for 12-15 people each
- Multi-bedded rooms (most with en-suite facilities)
- Large open-plan restaurant serving balanced, healthy meals
- Party Leader bar and coffee area
- Tuck shop/gift shop
- Beautiful Grade II grounds with woodland and secret garden
- 24-hour JCA staffing



https://www.youtube.com/watch?v=csMJGei80dE&list=PLI4yRa-DNz_tnqiJXDG_lREyGMbu2gKXa&t=16s

Activities

ACTIVITIES

DAY ACTIVITIES

- Abseiling
- Aerial Trek
- Archery
- Buggy Building
- Canoeing
- Climbing
- Dance Mania
- Fencing
- Grid of Stones
- High Ropes
- Initiative Exercises
- Laser Conquest
- Low Ropes
- Orienteering
- Raft Building
- Sensory Trail
- Sit-on-top Kayaking
- Tunnelling
- Wet and Wacky
- Zip Wire

EVENING ACTIVITIES

- Busted
- Campfire
- Film Night
- Disco (Loud and Silent)
- Giant Cluedo
- Laser Conquest
- League Toppers
- Nocturnal Safari
- Run Around Quiz

A complete list of activities to choose from at Condover Hall can be found on our website

Activities

THEMED ROOMS



Cinema Room



Dance studio



Grid of stones



Laser maze



Tunnelling room

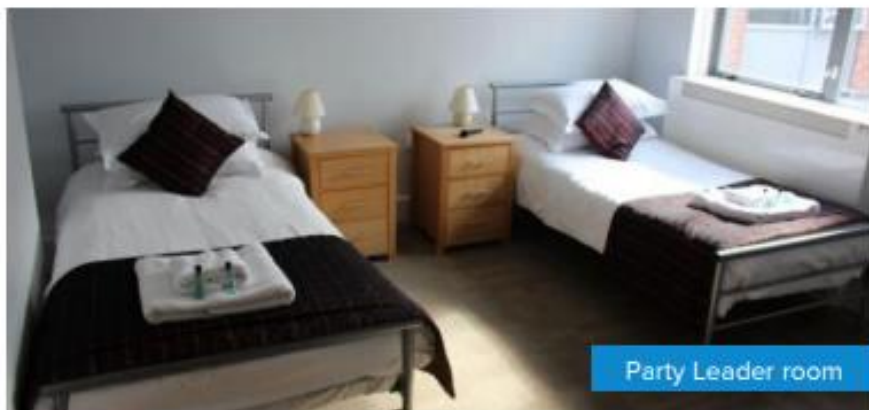


Games room

Sample Itinerary :

Morning		Afternoon		Evening
Monday or Wednesday				
Travel to the Centre Arrival at 2pm		Intro Tour	Abseiling	Campfire
Tuesday or Thursday				
Sensory Trail	Fencing	Laser Maze	Aerial Trek	Disco
Wednesday or Friday				
Archery	Team Challenge / Presentation	Travel back to school Departure from 12 noon		

ACCOMMODATION



- There are options of multi-bedded dorms (4 – 12 beds) for students, with most offering en-suite facilities.
- Rooms are a mixture of twins and singles, mostly with en-suite facilities within the same building as the children.
- Senior staff members are on duty until 10:30pm each day with night staff patrolling between the hours of 10:30pm and 07:30am.
- Centre doors are secured in the evening, but can be opened in case of emergency and security barriers guard the entrance to the site.

When will be going?

Wednesday 14th February 2024 – Friday 16th February 2024

Departing: Wednesday 14th February 2024 at approximately 12:30pm

Arriving back: Friday 16th February 2024 at approximately 3:00pm

(all times tbc)

Costings and payment:

The provisional cost of the visit will be £186.00 (£93.00 for Pupil Premium/FSM children) which covers food, overnight accommodation, transport and all activities. *However, this figure is based on all Y6 children attending and may alter slightly if numbers are less.*

If you would like to reserve a place for your child then a deposit of £25.00 (£13 Pupil Premium/FSM) (non-refundable) must be paid online by **Friday 30th June 2023.**

The full payment will be due by **Tuesday 31st October 2023.**

All payments are non-refundable. Once you have paid the deposit you are committed to paying the full amount, even if your child does not attend.

Payment schedule:

The full payment must be paid by Tuesday 31st October and can be made in manageable instalments as per the payment schedule below if required:-

Initial Deposit:	£25.00	Friday 30th June 2023	= £ 25.00
1st Instalment	£50.00	Monday 31st July 2023	= £ 75.00
2nd Instalment	£61.00	Friday 29th September 2023	= £136.00
3rd Instalment	£50.00	Tuesday 31st October 2023	= £186.00

If your child is pupil premium/FSM:

Initial Deposit:	£13.00	Friday 30th June 2023	= £13.00
1st Instalment	£25.00	Monday 31st July 2023	= £38.00
2nd Instalment	£30.00	Friday 29th September 2023	= £68.00
3rd Instalment	£25.00	Tuesday 31st October 2023	= £93.00