

# Year 3 plants

## Key Vocabulary

fertilisation	Fertilisation is the process whereby part of the pollen combines with an ovule in the flower's ovary, producing a seed that can grow into a new plant
flower	A flower is the part of a plant that makes seeds, which grow into new plants. Most flowering plants only grow flowers for a short time each year
germination	Germination is the process by which a seed starts to grow.
leaf	A leaf is the part of a plant that makes food for the plant by absorbing energy from sunlight.
nutrients	Nutrients are substances that are needed by living things to grow and survive. Most plants gather nutrients from the soil using their roots.
pollination	Pollination is the process whereby pollen (a fine powdery substance produced by a flowering plant's anther) is moved to a flower's stigma.
pollinator	A pollinator is an animal that carries pollen between flowers. Examples include insects, birds and bats.
roots	Roots are the part of a plant that anchor the plant into the ground and absorb water, air and nutrients.
seed	A seed is a small, fertilised ovule of a plant that, when in the right conditions, can grow into a new plant.
seed dispersal	Seed dispersal is the method of moving seeds away from the parent plant so the seeds have the best chance of survival.
stem	A stem is the central part of a plant, which supports it and carries water and nutrients around it.

## Parts of a Plant

### Fruit

encases a plant's seeds and is often eaten by animals

### Flower

produces seeds that can grow into new plants

### Leaf

absorbs sunlight to make the plant's food

### Stem

transports water and food around the plant

### Roots

support the plant, take up water, air and nutrients from the soil and can store food and water

## What Does a Plant Need to Grow?

### water



### light



### air



### space



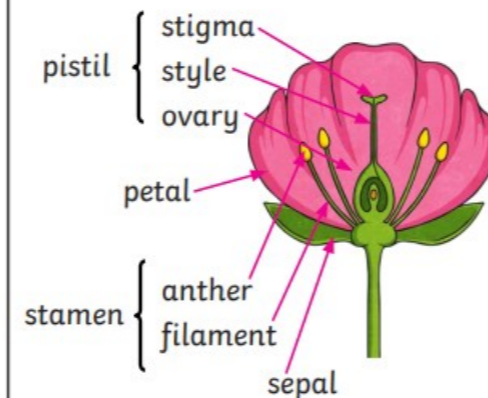
### nutrients



### temperature



## Parts of a Flower



## Life Cycle of a Flowering Plant



## Seed Dispersal

Plants disperse their seeds in a variety of ways.



wind



water



animal (carrying)



animal (eating)



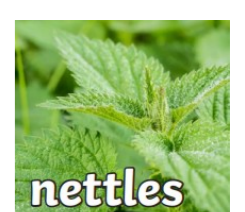
bursting



buttercup



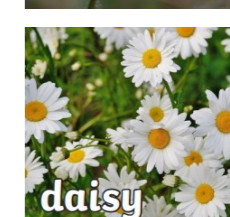
poppies



nettles



bluebells



daisy



white clover