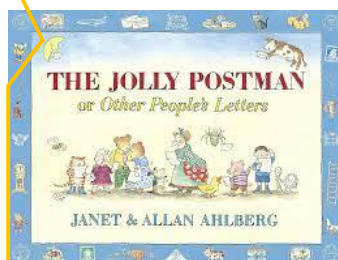


### Maths

We will be continuing to use our Power Maths scheme of work. This term we will be focussing on numbers to 20.

### Topic

In geography this half term we are learning about where we live in the UK, where the UK is in the world and how we are made up of four different countries. We will also learn about addresses and how a post worker uses them through 'The Jolly Postman'.



## Spring 1 Year 1

### Literacy

In Literacy this half term, we are focusing on a range of stories by the author Oliver Jeffers. Some of the stories we have chosen are Stuck, The Heart and the Bottle and Lost and Found.



### Science

In science this half term we will continue to look at everyday materials and their properties. We will continue to focus on the season 'Winter' and will observe the effects of winter on our tree in the playground.

### R.E.

In R.E, we will be learning about "Who is a Christian and what do we believe? Then we will move on to "Who is Jewish and what do they believe?"

### Notes/Dates

**Our class assembly** will be on THURSDAY 18th JANUARY at 2:40pm. We would love for you to attend and afterwards, you are welcome to come and see your child's books.

We are celebrating World Religion Day on Mon 22nd Jan.

PE Days will remain on Tuesday and Wednesday.

**Please provide your child with a labelled PE kit – this must include PE bottoms, top, jumper and trainers.**

D&T fortnight - food focus (Week beginning 22nd January)

Please remember that snacks need to be healthy e.g. fruit, vegetables, cereal bars. Unhealthy day is Friday only.

Parent's evening Tues 6th & Wed 7th Feb.

**Term ends on Friday 9th February 2023**