

# Year 6 Welcome Meeting



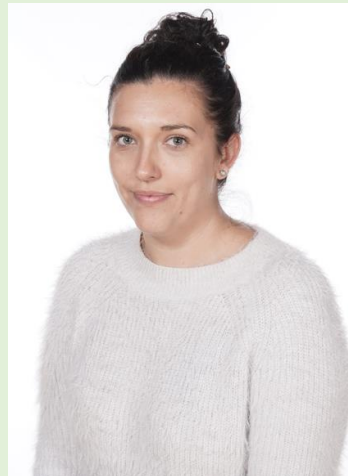
# SLT / Office staff



**Mrs Rudd**  
Executive  
Headteacher



**Mrs Pattenden**  
Deputy  
Headteacher



**Miss McKenzie**  
Assistant Head &  
Early Years Lead



**Mr Rudd**  
Assistant Head &  
Safeguarding Lead



**Evelyn Uche**  
Family support officer



**Lisa Redford**  
School Administrator



**Kath Fisher**  
School Administrator



**Dianne Harris**  
Business Manager

# Staff in Y6

Miss Jones, Mr Moore, Mr Dickinson

Mrs Richards, Mrs Kirkham, Miss Slack, Mrs Vickers

Assistant Heads and Y5/6 Leads - Mrs Campbell and Mrs Ackerley

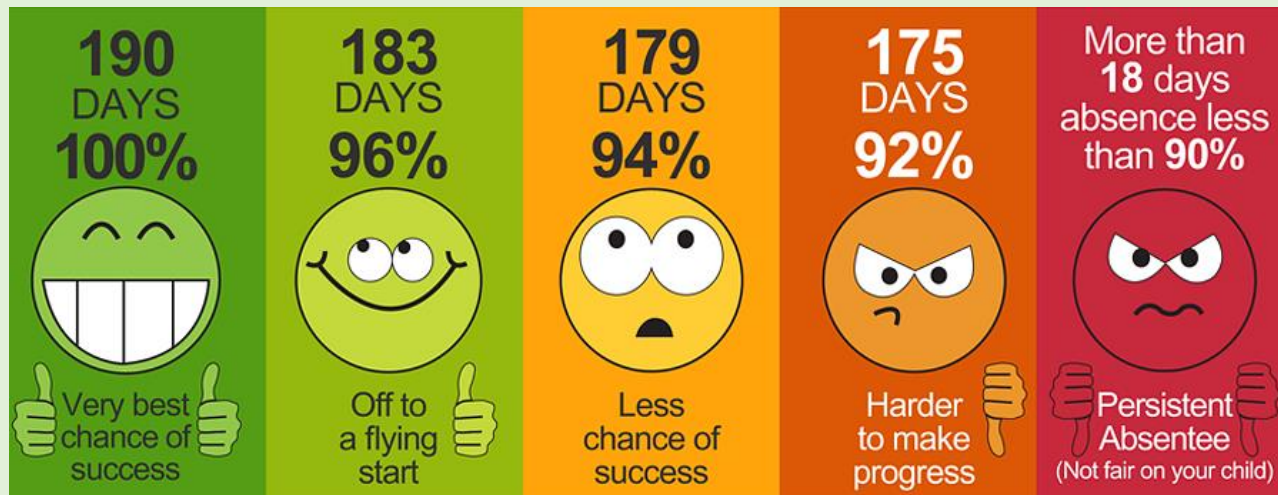


# Attendance = Success for your child!

Your child's attendance is very important! Our whole school target is 96%

If you are late (9:00am onwards), please take your child to the main office to sign them in and receive a red slip.

You will also need to pick them up from the office if you are picking them up early.



# Times of the day

- Classroom doors open at 8.45am.
- We start taking the register at 8.55am so please ensure your child is in by this time.
- Children will finish at 3pm so please ensure you are on time to pick them up. If you arrive after 3.15pm they will be taken to After School Club and you will be charged.



- Black, navy or grey school trousers/skirt
- White or blue shirt or polo shirt
- Navy blue sweatshirt, cardigan or fleece
- Black footwear
- Blue and white check summer dress
- **PE Kit** - Black or Navy shorts, Plain white t-shirt, Black Pumps
- **PLEASE** write your child's name in their clothing.



# Behaviour Policy

## KS1/KS2 Sanctions Sheet

Bullying	Inform parents. Break/lunch or after school detention or possible exclusion depending on severity.
Deliberate racist/homophobic acts	Inform parents. Break/lunch or after school detention or possible exclusion depending on severity.
Class based incidents	
Verbally abuse child/name calling	Traffic light system. If serious, then lunch or after school detention.
Verbal aggression towards staff	KS2 15 minute after school detention. KS1 lunch detention.
Swearing	Traffic light system
Physically hurt child	Inform parents. Lunch or after school detention or possible seclusion/exclusion depending on severity.
Waste time in class	Break/lunch time detention
Deliberate destruction of equipment	Traffic light system. If it is serious (e.g. purposely breaking furniture/window) then send for SMT.
Disrespectful in class	Traffic light system
Refusal to do work	KS2 15 minute after school detention. KS1 work to be sent home.
Refusal to follow adult instructions	Traffic light system
Running off/walking away from an adult	KS2 15 minute after school detention. KS1 lunch detention.

Running off/walking away from an adult	KS2 15 minute after school detention. KS1 lunch detention.
Walk out of class	KS2 15 minute after school detention. KS1 lunch detention.
Refusal to leave on red card	Lunchtime detention – call for SLT Refusal to leave for SLT – after school detention.
<b>Playground incidents</b>	
Physically hurt someone	Sent onto wall and lose rest of play or next play depending on time of incident. If it is serious, send to member of SLT for an appropriate sanction.
Deliberate destruction of equipment	Sent onto wall and lose rest of play or next play depending on time of incident.
Verbally abuse someone	Sent onto wall and lose rest of play or next play depending on time of incident.
Refusal to follow adult instructions	Detention break/lunch.
<b>Incidents online</b>	
Cyber bullying	Inform parents. Break/lunch or after school detention or possible seclusion/exclusion depending on severity.
Sending hurtful or unkind messages	Inform parents. Break/lunch or after school detention or possible seclusion/exclusion depending on severity.

Sharing inappropriate content	Inform parents. Break/lunch or after school detention or possible seclusion/exclusion depending on severity.
<b>Uniform</b>	
If a child is not wearing the correct uniform, see the steps below.	
1 <sup>st</sup> day	Speak to pupil about their uniform. Inform office for reminder text to be sent.
2 <sup>nd</sup> day	Text sent to parents and uniform provided for pupil from Eve.  If pupil refuses to wear provided uniform:  1 <sup>st</sup> day of refusal – break time detention.  2 <sup>nd</sup> day of refusal – lunch time detention.  3 <sup>rd</sup> day of refusal – after school detention.





# Reading



Your child will have been given their own school reading book which has been carefully matched to their reading attainment.

In Y6 we expect the children to read for 20 minutes at least 3 times a week, making a note of the page numbers in their school planner.

This will be checked every Friday and rewards given/detentions if incomplete.



# Homework



Your child will be given spelling homework on a Monday ready for a spelling test the following Monday.

Literacy and Maths homework will be based off our in school lessons and is really important to consolidate what we have taught.

**Homework is given out on a Wednesday and due in the following Monday.**

Detentions will take place on a Tuesday break time.



# SATS



In Y6 children sit tests called SATS.

They are nothing to worry about, they are simply national assessments to check children's academic progress.

There is so much more to Y6 than just prepping for SATS, all we ask is that your child tries their best all year and they will be well rewarded in the summer term for their hard work!

There will be a SATS meeting for parents in the Spring term.

# Residential

We have booked the Residential for Y6 at PGL in Shropshire on the 26<sup>th</sup> June-28<sup>th</sup> June!

We will do a Parent Meeting a lot closer to the time.

The cost for the trip is £150.00 per child.



# Trips

29<sup>th</sup> November Quarry Bank Mill

Sikhism Temple Spring Term

Stockport Air Raid Shelters Summer Term





# End of Year Reward Trip

At the end of Y6 we hold a reward trip in July for the children who have shown excellent behaviour.

Previously, we have gone to Gulliver's world and it is likely we will go there again this year as the children love it!

Each child will have a behaviour chart and we will assess the behaviour of each child individually to decide if they are able to go.



# Rights Respecting

This year we are trying to achieve the Silver Rights Respecting Award.



	<h2>Rights Respecting Award</h2>	
To _____ Class _____		
<div></div>		
Signed _____		Date _____
	<i>Aiming high to reach our goals</i>	

# Diary Dates

- 5<sup>th</sup> October 6HJ Class Assembly
- 12<sup>th</sup> October 6JM Class Assembly
- 19<sup>th</sup> October 6MD Class Assembly
- 18<sup>th</sup> October Parent's Evening
- 29<sup>th</sup> October Trip to Quarry Bank Mill
- 13<sup>th</sup> - 16<sup>th</sup> May 2024 SATS Week
- 26<sup>th</sup>-28<sup>th</sup> June 2024 Residential