

Brookside Primary School – Goldfinch ART – Painting

Prior Knowledge – What should I already know?

I know how to:

- How to blend colours.
- Work from a variety of sources.
- Develop close observational skills using a variety of view finders.
- Create prints with 3 overlays.
- Work into prints with a range of media.

Key Learning – What will I know at the end of the topic?

I will be able to:

- Develop painting from a drawing.
- Work from a variety of sources.
- Mix and match colours to create atmosphere and light effects.
- To identify and work with complementary and contrasting colours.

Ongoing Drawing Skills

- Work from a variety of sources including observation, photographs and digital images.
- Work in a sustained and independent way to create a detailed drawing.
- Develop close observation skills using a variety of view finders.
- Use a journal to collect and develop ideas.
- Identify artists who have worked in a similar way to their own work.

Lines, Marks, Tone, Form and Texture

- Experiment with wet media to make different marks, lines, patterns, textures and shapes
- Start to develop their own style using tonal contrast and mixed media.

Perspective and Composition

- Begin to use simple perspective in their work using a single focal point and horizon.
- Begin to develop an awareness of composition, scale and proportion in their paintings e.g. foreground, middle ground and background.
- Show an awareness of how paintings are created i.e. Composition.

Vocabulary

Prior **Required** **Challenging**

Mixing - to put things together

Primary colours - looking closely at something in detail

Secondary colours - the way the surface of something feels

Atmosphere - to make something into a particular shape

Contrast - to shape or construct something

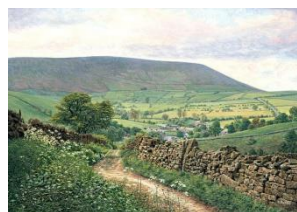
Complementary - to make something out of clay

Perspective - to make something by joining parts together

Proportion - a shade of colour

Observation -

Composition - a 3-dimensional model



Focus Artist: Keith Melling

Keith Melling is one of England's leading landscape painters. He was born in 1946 and has been drawing and painting for as long as he can remember. He is well known for painting landscapes of Pendle Hill in Lancashire.