



A Primary School Residential at Springhead

Inspiring independence, resilience, and
adventure in the heart of Dorset.



Springhead offers a spectacular natural retreat at the edge of Cranborne Chase.



Located at the foot of North Dorset's spectacular downland.



Positioned on the edge of the Cranborne Chase Area of Outstanding Natural Beauty.



Features a range of thatched cottages and an 18th-century mill house formed around a beautiful courtyard.



A central pool is fed by spring water that runs beneath the mill house to become a gentle stream flowing into the River Stour.

Hearty, warming meals are shared together in the historic Mill room.



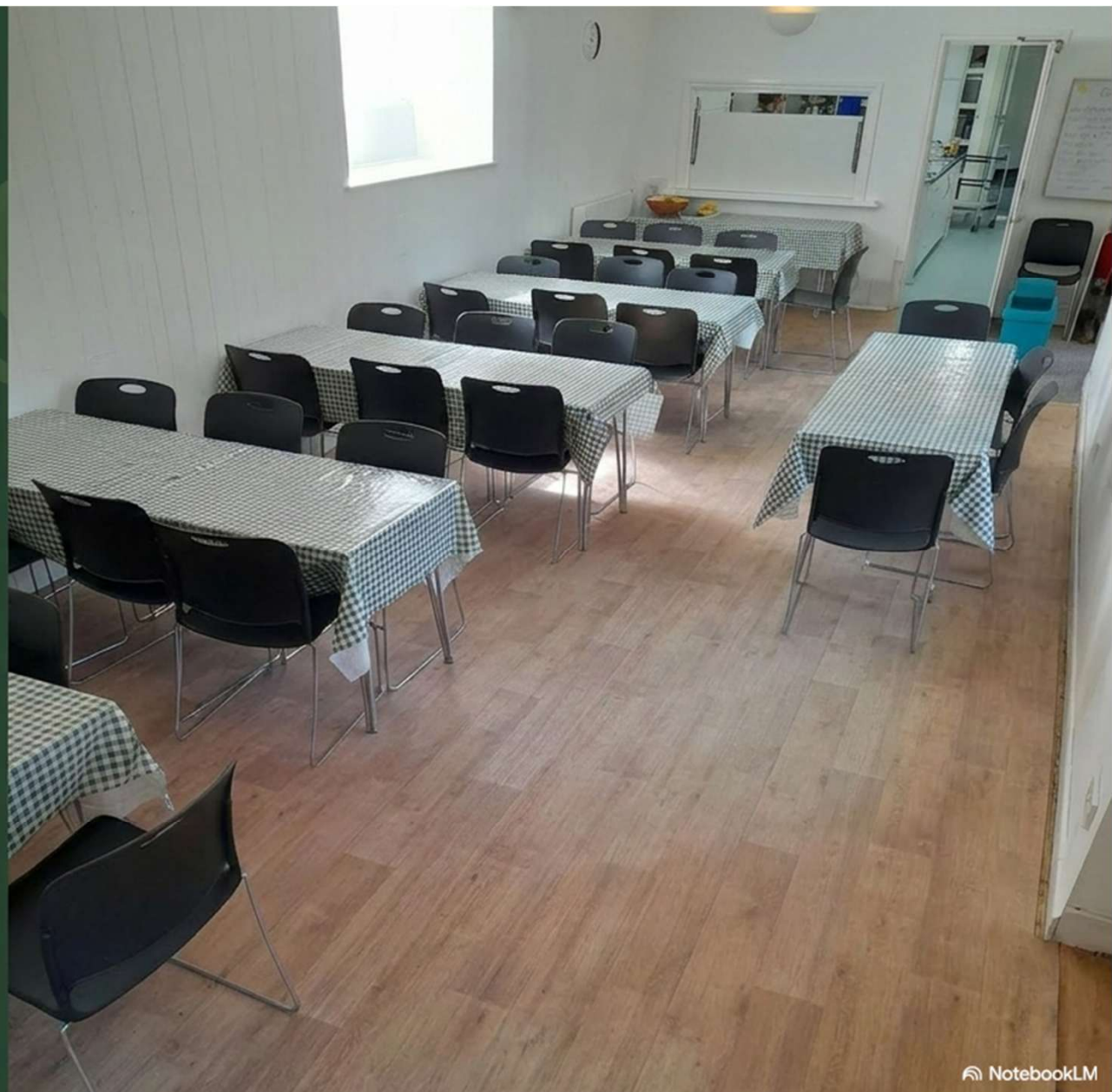
Dining Space: Meals are eaten communally in the dedicated Mill dining room.



Sample Dinner: Thursday evening features a comforting meal of Spaghetti Bolognese and Garlic Bread.



Dietary Needs: Please ensure the school is notified of any dietary requirements in good time; the venue will accommodate these.



Ensuring every child is nourished from the moment we arrive.

The Day 1 Lunch Flow



Thursday combines orientation with wilderness survival skills.

10:00

Welcome

Settling into
dorms and safety
briefing.

11:00

Orientation

Treasure Hunt
around the lake,
including tasting
the fresh
springwater.

12:45

Wilderness Skills

Walk up the chalk hill
behind Springhead
into the woods for
an afternoon of
den-building.

16:30

Nature Challenges

Guided activities
within the grounds.

18:30

Dusk

Marshmallows
around the campfire
followed by hot
chocolate before
bedtime.

Friday focuses on water ecology and lakeside reflection.

08:00

Preparation
(Breakfast and making packed lunches for the day.)

09:30

River Flow
(Building boats from found materials near the spring and testing their buoyancy.)

10:45

River Dipping
(Minibeasts workshop and guided river dipping.)

11:45

Reset
(Supervised return to dorms to change into dry clothes and strip beds.)

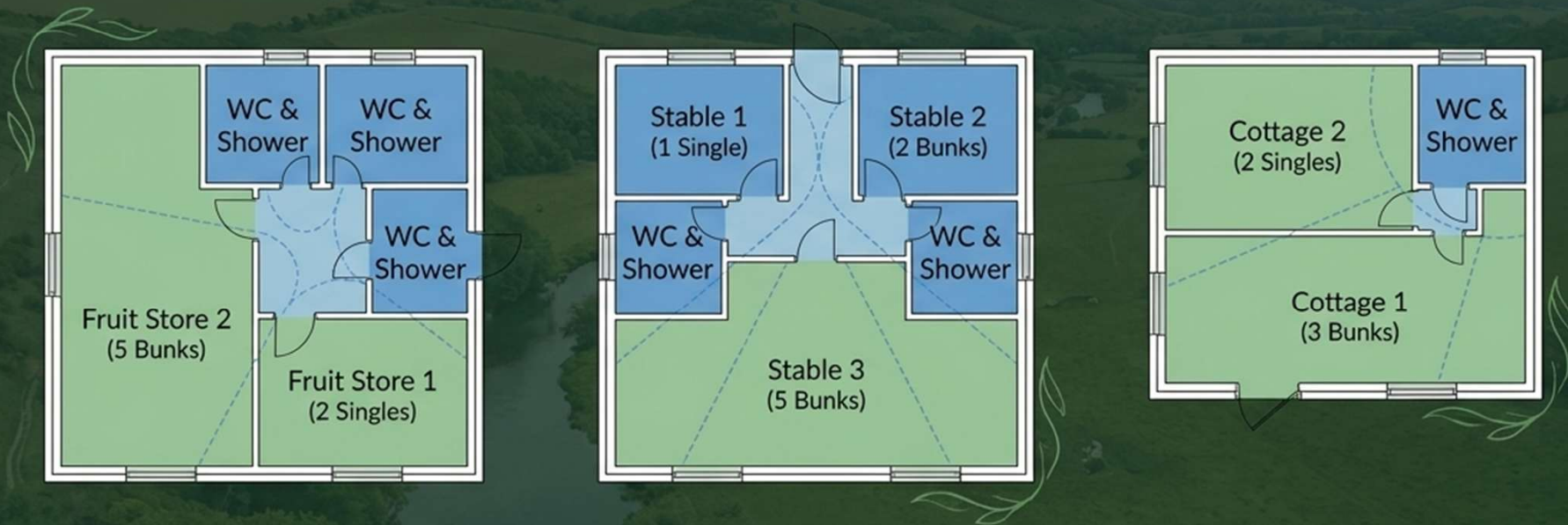
13:00

Connection
(Final nature challenge activity by the lake and reflections in the Barn Classroom.)

14:00

Departure
(Departure for home.)

Our dormitory layout ensures continuous proximity and supervision.



“Radius of Care” Dormitory Map

Accommodation features basic dormitory-style bunk beds. Final sleeping arrangements are decided by school staff based on class numbers and boy/girl ratios.



Pack for all weather conditions and outdoor comfort.

Clothing

- Waterproof coat and trousers
- Wellington boots
- Walking boots/sturdy shoes
- Full-length trousers & long-sleeved top [crucial]
- Plenty of spare socks
- Sun hat



Gear

- Rucksack with comfortable straps for hiking
- Named water bottle
- Torch
- Sunscreen

Comfort

- Towel & toiletries
- A cuddly toy
- A reading or puzzle book

Recommended kit list

Having the right gear will make your child's visit to Springhead much more enjoyable. We are an outdoor centre and aim to use our outdoor spaces in all weather conditions, providing our high safety standards are still able to be met. Please note this list is about specific items that children will need in addition to basic clothing requirements for their length of stay.

Clothing items	Non-clothing items
<ul style="list-style-type: none">• Wellington boots• Walking boots/sturdy shoes• Waterproof coat (and waterproof trousers if possible)• Full-length trousers and long-sleeved top*• Plenty of spare socks• Hat/Cap (for sun)	<ul style="list-style-type: none">• Rucksack - with comfortable straps for hiking• Named water bottle• Sunscreen• Torch• Towel and toiletries• A cuddly toy• A reading or puzzle book

Our guidelines ensure a secure, focused environment for all children.



Staying Connected

There is no mobile reception or internet for children at Springhead. School staff have constant access to a landline for any emergencies.



Safe Boundaries

For safeguarding, the site is not open to the public. The lake is strictly not for swimming, and children are not permitted to leave the grounds unescorted.



Weather Resilience

We operate an outdoor centre and aim to carry on with our planned timetable in all weathers. High safety standards are maintained regardless of rain.

Leaving screens and money behind unlocks total immersion in nature.



By strictly enforcing a no-phone and no-pocket-money policy, we remove daily distractions. This constraint is highly intentional: it forces children to look up, engage directly with their peers during den-building, foster true independence, and fully immerse themselves in the natural beauty of the Cranborne Chase without a digital filter.



We are ready to guide your children through an unforgettable Dorset adventure.

Expertly supervised, beautifully situated, and meticulously planned. The adventure awaits.