



Pinehurst Primary School

Year 1 Curriculum Newsletter Autumn 1 2023

The information on this sheet will give you a brief overview of some of the activities we will be doing this term across the curriculum.
Please feel free to contact your child's class teacher if you have any questions or can offer any help.

English

We will start by looking at the story of **Beegu**, using this to write sentences and lists, look at adjectives and predictions.
After this, we will move onto a new story called **The Bear and the Piano**.



We will continue to develop our letter formation and participate in daily RWI Phonic sessions.

Maths

This half term in **Maths No Problem!** We will be focusing on **Numbers to 10**. This will include, sequencing numbers, identifying quantity and identifying numbers greater than and less than. This will be followed by **Numbers Bonds**. Followed by addition within 10.



Computing

This half term we will develop on our **basic computer skills**, and learning what a Computer is. We will also be exploring **parts of a computer**.



P.E.

Invasion Games - We will be developing ball skills- throwing and catching. We will use our skills to work competitively and co-operatively.

Gymnastics - We will develop our coordination when traveling to roll, balance and climb. We will use movement to show relaxed, stretched and curled actions.

P.E. will take place every Friday this half-term.



RE

In RE we are asking the question: **How and why do we celebrate special and sacred times?** This unit is part of the **Beleving** strand of our agreed Liverpool RE syllabus. We will discuss what stories our family share and celebrate, recall and perform key parts of the story of Holy Week and to begin to understand why the stories of Holy Week and Easter are special or holy for Christian people.



P.S.H.E

Our PSHE topic this half term is **Being Me in My World**. Within this topic we will discuss feeling special and safe. We will find out about rights and responsibilities involved with being part of a class. The children will discuss rewards and consequences and recognise their successes by looking at what they feel proud about.



Visits and Visitors (Building our Cultural Capital)

We will be undertaking a short outdoor walk to Stanley Park to support our Geography and Science topics

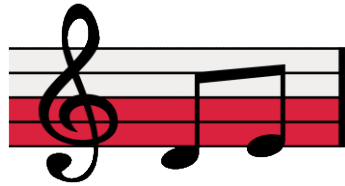
Additional Information

Book bags can now be brought in on any day and will be changed when they are in the Book Bag Box, have been read 3 times and have a signature from an adult at home. Please support children in their reading, this should be done daily. Elm and Cherry Class have P.E on a Friday afternoon. Homework will be sent home weekly. This may be set via Class Dojo, or may be a paper exercise.

As a Musician

As an Musician, we will be learning: Body percussion!

This half term we will be taught a specialist music teacher, Ms Nev-Ev. We will be performing from simple musicograms using body percussion. We will also read and write basic notation and create simple rhythmic composition.



Pinehurst Primary School

Year 1

Autumn 1 2022

This half-term our topics are...

As a Scientist

As a scientist, we will be learning:

About Seasonal Changes.

We will observe changes across the four seasons looking at trees and how some animals adapt. We will also observe and describe weather associated with the seasons and explore how day length varies.



As a Geographer

As a Geographer we will be learning:

About fieldwork around our school.

We will be looking at aerial maps of our school and labelling them. We will also look at landmarks around our school and create simple route maps.



As an Artist

As an artist we will be learning:

About drawing and different marks.

We will explore making different marks using charcoal and pencil. We will look at examples of artist's self-portraits before drawing our own.



As a Linguist

As a Linguist, we will be learning:

How to count to 10, say colours, and say where we live and how we are feeling.

