

EYFS Knowledge Organiser

The World Around Us!

AUTUMN

Autumn is a season the months are; September, October, November.

SEPTEMBER

OCTOBER

NOVEMBER

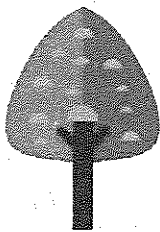
HARVEST BEGINS



Deciduous trees lose their leaves. Evergreen trees keep their leaves.

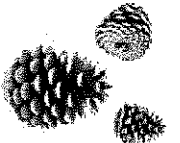

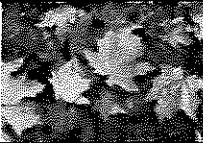
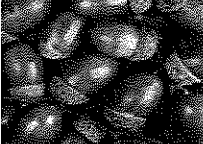
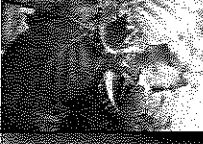
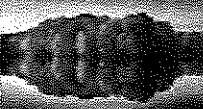


Deciduous

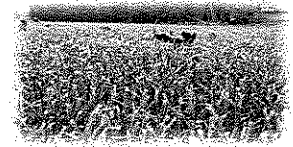


Evergreen

Autumn treasures include; conkers, acorns, beechnuts, cones, foliage, breeze. Leaves change colour from green to red, yellow, orange or brown.

| | |
|---|---------------|
|  | Pinecone |
|  | Conker |
|  | Autumn leaves |
|  | Acorn |
|  | Beechnut |
|  | Foliage |

Weather changes include; temperature, wind, fog, frost.



| | |
|-----------------------|--|
| Seasons | A year is split into four parts. As the season changes, the weather changes too. |
| Autumn | A season in which the weather gets cooler, and it gets darker earlier. |
| Harvest | To gather crops. Crops are plants that we use to make food. |
| Harvest Festival | Harvest Festival is celebrated to give thanks for the crops that the farmers have worked hard to grow. |
| Farmer | The person that grows our food and cares for animals on a farm. |
| Combine harvester | A machine to gather wheat (a type of crop.) |
| Darker | When there is less light. |
| Bare | When the leaves fall off the trees, there are no leaves left on them. The tree is bare. |
| Hibernate | When an animal or plant sleeps through the winter. |
| Diwali | A five-day festival celebrated by Hindus. |
| The festival of light | This is another name given to Diwali. |
| Hindu | People that follow the religion Hinduism. |
| India | A country in Asia. |
| Bonfire Night | A celebration observed on 5 November in the UK. |

Why Do Leaves Change Colour in the Autumn? In the spring and summer, the leaves contain something called chlorophyll. Chlorophyll helps the tree to make food. It also gives the leaves a green colour. In the autumn and winter, there is less daylight so the tree stops making food and there is less chlorophyll in the leaves. The green colour fades and other colours such as yellow, orange, red and purple show through.

