



Name: _____

I can use the suffix 'ful'.

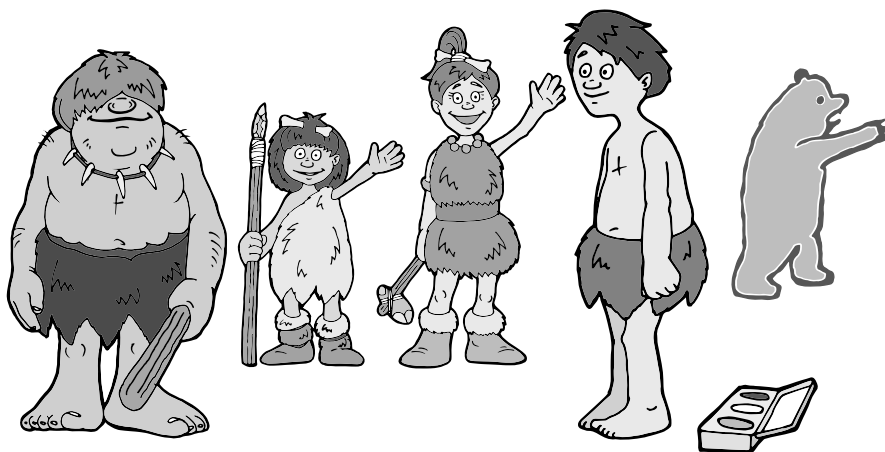


A **suffix** is a group of letters added to the end of a word that changes the meaning. The suffix '**ful**' means '**full of**'.

Add the suffix '**ful**' to the words written in bold.

- 1 Sol and Luna Moonlight came in the cave with a **cheer**..... smile.
- 2 "We are so **thank**..... you invited us," said Luna.
- 3 "And it was so **thought**..... inviting me too," said Dusk.
- 4 Then they saw the **dread**..... paintings on the wall.
- 5 Axel was upset by his **shame**..... behaviour.
- 6 Nobody said a word for a few **aw**..... seconds.
- 7 Then Sol said, "What **wonder**..... paintings!"
- 8 "These are simply **delight**.....," said Luna.
- 9 "You really like it! Are you being **truth**.....?" asked Flame.
- 10 "Like it? We love it! It makes the cave so **colour**.....!" said Luna.
- 11 "It would be really **help**..... if you could tell us who the artist is."
- 12 "We want these (**beauty**)*..... paintings in our cave too!"
- 13 "I'm the **skil**..... artist," said Axel proudly.

(*change the 'y' to the 'i' and add '**ful**')



Choose some words with the suffix 'ful' and write some sentences of your own.

