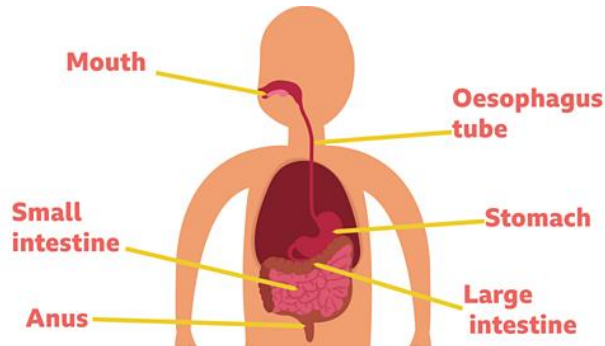


Digestion and Teeth

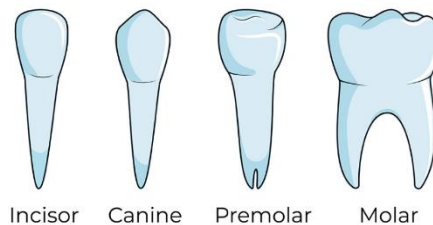


Key Vocabulary

Herbivore, Carnivore, Digestive system, tongue, mouth, saliva, oesophagus, stomach, small intestine, large intestine, rectum, anus, canine, incisor, molar, premolar, producer, consumer, predator, prey.

Sticky Knowledge

- Animals have teeth to help them eat.
- Different types of teeth do different jobs.
- Food is broken down by the teeth and further in the stomach and intestines where nutrients go into the blood.
- The blood takes nutrients around the body.
- Nutrients produced by plants move to primary consumers then to secondary consumers through food chains.



FOOD CHAIN

