

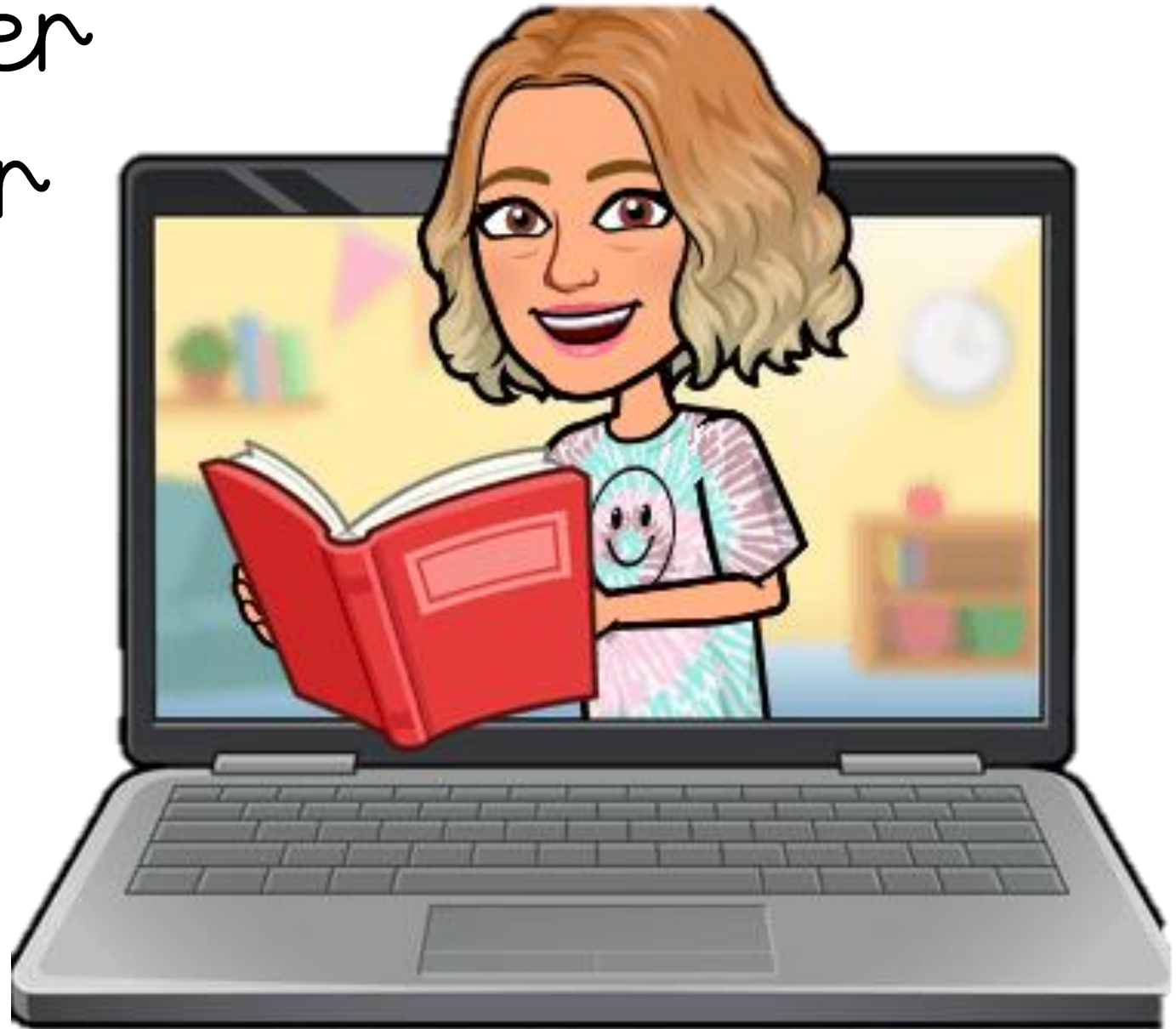
Meet the Teacher

Class 4

Miss Webster



Miss Webster
Mrs Webster



Our school day

Morning:

- 8:40 Register
- Handwriting
- 8:40 English
- 9.55 Assembly
- 10:10 Break
- 10:35 Guided Reading
- 11:00 Maths
- 12:00 Lunch

Afternoon:

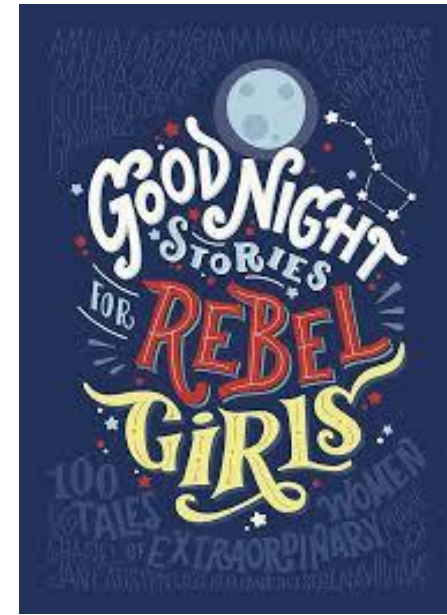
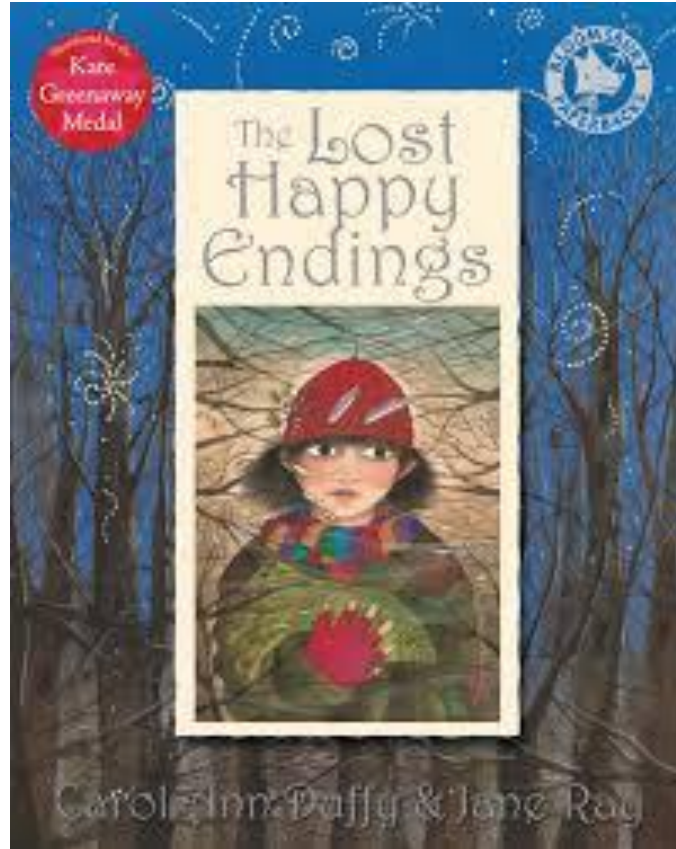
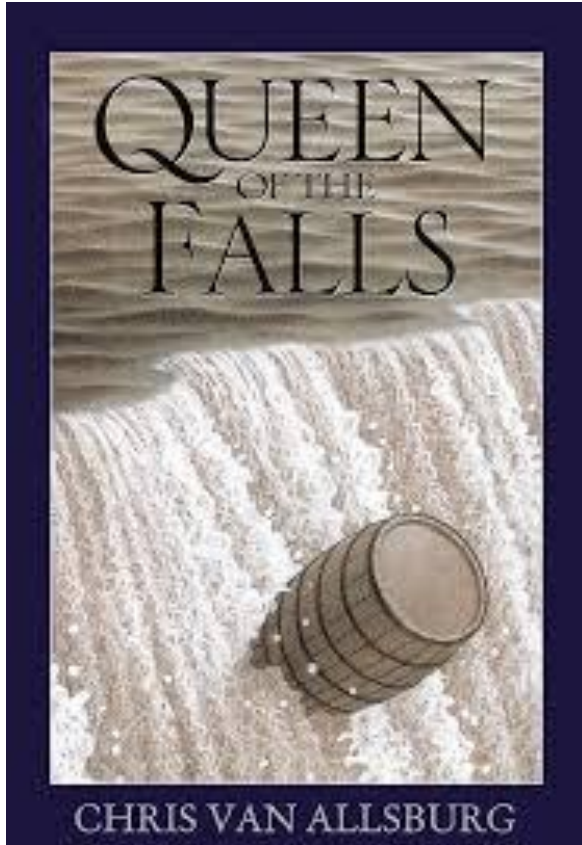
- 13:00 Register/Quiet Reading
- Monday - Silent read/French/PE
- Tuesday - R.E. / P.S.H.E/Music
- Wednesday - Topic-History/Geography
- Thursday - Science
- Friday - Art/Swimming

TODAY'S
your **DAY!**



English - Texts

The genres which will be covered are fiction based. The children will enhance their descriptive skills through the genres of: diaries, short stories, descriptions, newspaper reports.

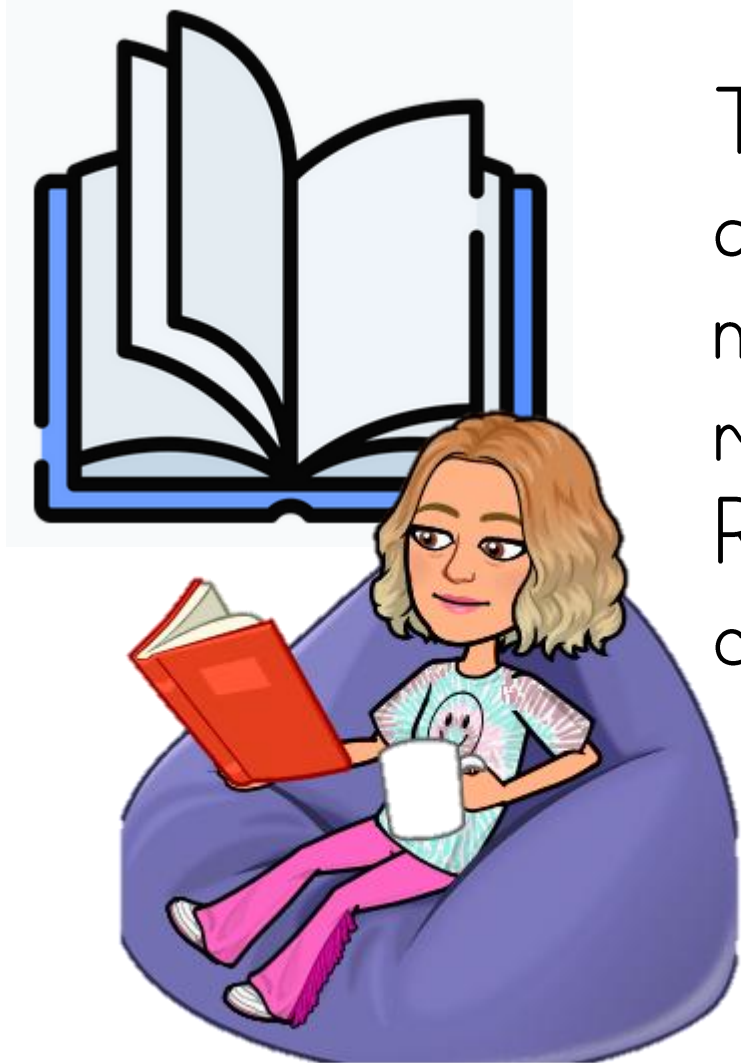


Pathways to read texts

Hansel and Gretel- a traditional tale with a twist.

Good night stories for rebel girls- this book has short stories of inspirational people.

Reading – In class and at home

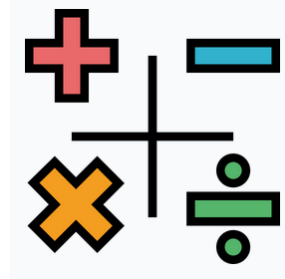
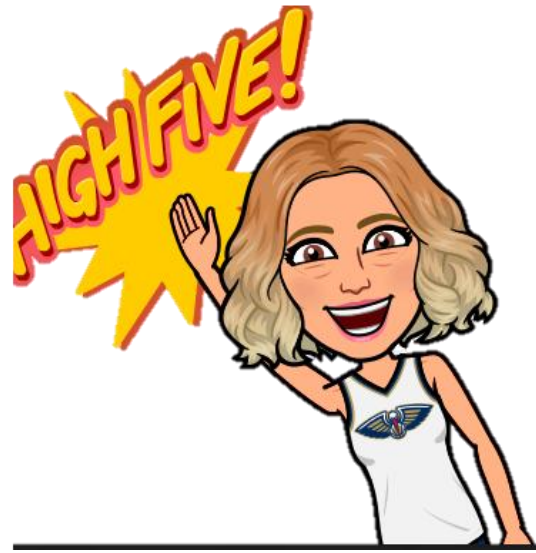


Throughout the school day, the class will be asked to read their reading book for 5 minutes. I would strongly encourage that reading is part of a routine at home. Reading every night will support your child's fluency and comprehension.

Maths

Autumn Term:

Place Value
Addition and
Subtraction
Multiplication and
Division
Statistics



Factors and multiples

Lesson
3

Starter

A group of pupils take part in 3 outdoor activities: kayaking, climbing and archery. They are put into groups of 4 for kayaking, groups of 8 for climbing and groups of 14 for archery. Each activity has more than 1 group.



What is the minimum number of pupils taking part in the outdoor activities?

Example



What is the smallest number divisible by 4 and 8?

$8 \div 4 = 2$
8 is the lowest common multiple of 4 and 8.

$8 \div 8 = 1$
8 is the lowest common multiple of 4 and 8.



We know that each activity has more than 1 group so climbing must have more than 8 pupils.

Find the multiples of 4 and 8.



Multiples of 4: 4, 8, 12, 16, 20, 24, 28, 32, 36, 40, 44, 48, 52, 56
Multiples of 8: 8, 16, 24, 32, 40, 48, 56

There may be 16 pupils. Four groups of 4 pupils kayaking.
Two groups of 8 pupils climbing.

8



Is 16 a multiple of 14?

Find the multiples of 14.



Multiples of 14: 14, 28, 42, 56, 70

56 is the smallest number that is a multiple of 4, 8 and 16.



We can say that 56 is the lowest common multiple of 4, 8 and 16.

The minimum number of pupils taking part in the 3 outdoor activities is 56.



We can also say that 4, 8 and 14 are common factors of 56.

Factors of 56: 1, 2, 4, 7, 8, 14, 28, 56

Practice

- 1 A baker makes some doughnuts. He can pack them all exactly into boxes of 6. He can also pack them all exactly into boxes of 8 or 18 without having any doughnuts left over.



(a) What is the minimum number of doughnuts the baker has made?

(b) Using the minimum number of doughnuts the baker has made, what other size boxes could the baker pack the doughnuts into without having any left over?

9

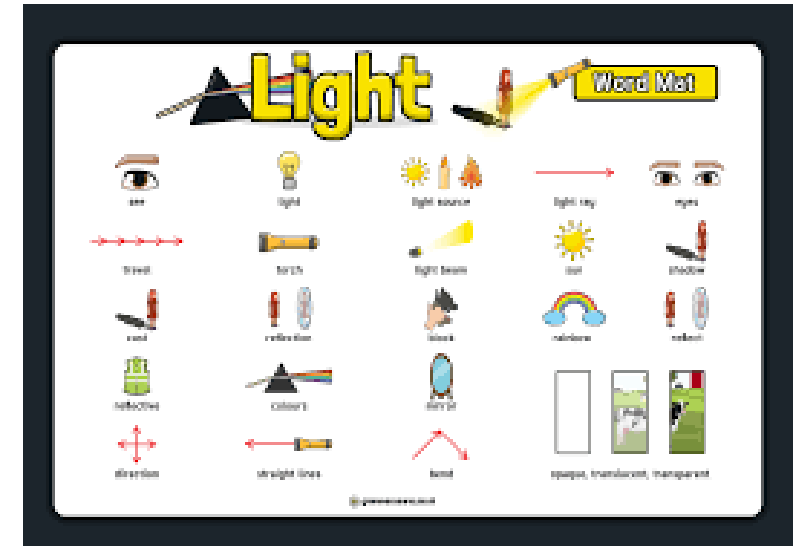
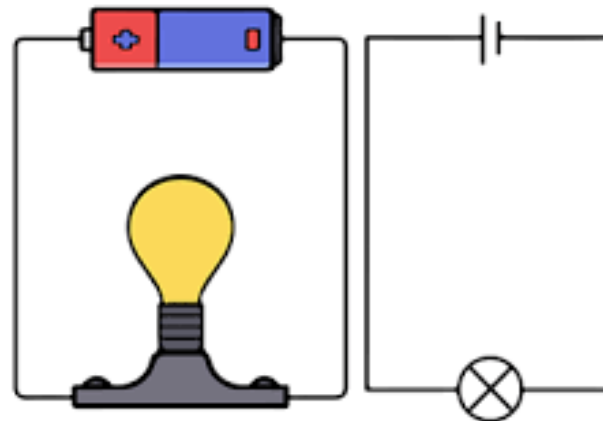
MATHS
NO PROBLEM!





Science

- Autumn 1- Electricity
- Autumn 2 Light





Topic - History: Maya Civilisation

We will cover:

- Where the ancient Maya people lived, naming some major features and cities in them.
- Some of the main Maya gods and what they represented.
- Read and write some basic Maya numbers and look at their calendar.
- Know that corn and chocolate were important foods and be able to identify some reasons for this.
- What games did the Maya people play.
- Where they lived and how it changed over time.



Art:

Mixed media and printing

Artist in Focus:

Frank Shepard Fairey is an American contemporary artist



Design and Technology

Aspect: Food technology

Product: To make bread which would accompany a Maya meal.



Computing

Sharing information

Video editing



Residential – TBC – Outdoor activities



Homework

- Reading - aim for 5-10 pages a night
 - Spelling- 10 spellings a week from statutory Year 5/6 spelling lists.
 - Maths- Work based on content that has been covered that week
 - Comprehension- Topic based/ CGP later in the year.
-
- Homework and spellings are sent out on Wednesday and need to be returned on the following Wednesday at the latest.



Spelling Homework

Spelling tests are on Wednesdays



Blue book

- Practice spellings 5 times
- Look - cover - write
- Bring in everyday



Pink book

- 10 Sentences
- Find definition and use
- Bring in Wednesday or before if completed.

Example
Spelling is: Community

Definition: A community is a group of people connected by a shared characteristic.

Sentence: I live in a community in Runcorn.

Important information

PE days - Mondays

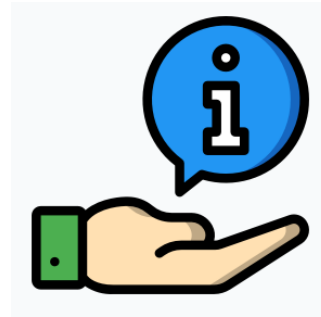
Swimming- Friday until Christmas

Class Dojo

I will post updates through this app. I will reply to messages on school days 8am- 5pm. This app is for reminders and messages you need to pass on. I will also post updates of our week every Friday.

Please email me/ school office directly for more in depth/ sensitive conversations.

lwebster@aston.cheshire.sch.uk



Any Questions?

