

Message from Headteacher

Airbus

A delegation of Hoole Primary School pupils attended a very special event on Thursday this week.

Leaders at Airbus UK, including one of our school governors, Paul Kilmister, successfully submitted a bid for one of the Beluga ST transporter planes to be permanently located at the Airbus plant in Broughton, North Wales, after being removed from service. The Beluga ST planes have been replaced by the Beluga XL transporters which we regularly see coming over our school playground on its way to European Airbus plants.



Our school supported this bid, providing information about how the retired Beluga could support local schools and colleges. Our submission talked about the value of this resource on science, technology and design technology learning, as well as raising aspirations and encouraging pupils to consider employment in these fields.

The children who represented our school were warmly welcomed by Airbus staff. They observed the Beluga ST 5 coming in to land on its final mission to Broughton. We were lucky to have a close up view and to celebrate the Beluga's retirement with Airbus staff and invited dignitaries.

The delegation from our school showed exemplary behaviour and impeccable manners. We were one of only three schools invited to attend and I was proud of the manner in which our children shone as interested and engaged young people.

Parking Enforcement

I have been saddened to hear that some families have received penalty notices for parking around our school site.

I have made our school community aware that parking enforcement officers are regularly patrolling this area at peak times. If you are parked on double yellow lines, you will be fined.

Message from Headteacher

Shakespeare Club

Year 3 & 4 Shakespeare Club will be performing Hamlet later this year. The Year 5 & 6 Club will perform the comedy, A Midsummer Night's Dream.


I will inform you of the show dates as soon as possible. Rehearsals for both shows will start next week and all are welcome to enjoy performances with us.

This is a great way for your child to learn Shakespearean works which we hope gives them confidence for future learning.

OUR TRIP TO AIRBUS!



The Morning Mile Returns!



1 MILE RUN
with Mrs Cooper!

Tuesdays and
Wednesdays
mornings

**8.30AM
START**

SIGN IN AT THE SCHOOL GATE WITH MRS COOPER. THE CLASS WITH
THE MOST PARTICIPANTS WINS THE WEEKLY CONTEST!

**STARTING
3RD FEBRUARY**

Ready, Set, Go!



Mrs Cooper is launching a new incentive for those pupils who enjoy a fresh and speedy start to the day with a 1 mile run!

Every Tuesday and Wednesday morning from 8.30am, Mrs Cooper will welcome you sporty lot at the school gate for a run around the field.

To make it more interesting, we will hold a weekly competition and the class with the most participants will win the weekly contest!

All you need to do is:

- Enter the field via the school gate
- Be sure to sign in with Mrs Cooper so that your run is included in the weekly total
- Run free around the field
- Make sure that you make it into class for 8.50am when registration starts!

Year 6 SATs Meeting

Parents and Carers of pupils in Year 6 are invited to join the Year 6 Team to learn more about the upcoming end of Key Stage 2 Assessments (SATs) on Wednesday 4th February at 5.30pm.

The main purpose for this evening is to provide you with information on the 2025 Key Stage 2 Statutory tests and Teacher assessment requirements for the end of Key Stage 2. The meeting will last approximately 30 minutes.



HS2
SATS
SUPPORT

Early Help Navigator

Our school Early Help Navigator is called Donna.

The role of Early Help Navigators is to:

- Help you to navigate what support is available locally;
- Offer help, support and advice;
- Be a listening ear;
- Help with completion of forms;
- Signpost families to local and national services.

Look out for Donna outside the front of school on the first Thursday of every month (next date: 5th February).



Class Worship

This week our class based worship looked at the news that the FA has published a review looking at behaviour in football across England. The aim of this review is to ensure that football practice and matches are safe, fair and enjoyable for everyone. The key message, is that it is important that sport is enjoyable for all - those participating, those refereeing and those who are watching.

Children reflected that this links to the British Value of Rules of Law and that laws keep us safe, and that all protected characteristics are included in this work.

The Bible verse we looked at was

Matthew 7:12 - So in everything, do to others what you would have them do to you, for this sums up the Law and the Prophets.

Questions you might want to ask your child

What does a respectful community look like?

Can we be respectful without saying anything?

Should respect be 'earned' or does everyone 'deserve' it?

How do we show respect if people want to be treated differently than how we would?

Superstar Alert!



Year 6's Daryna took part in an ice skating competition in Deeside earlier this week. We are so proud to share that she achieved excellent results:

2nd place in the Pattern Dance and 3rd place in the Free Dance!

We are incredibly proud of her and all her hard work. Well done Daryna; keep on shining!



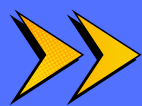
Special Visitors



We have some special visitors leading our assembly on Monday.

PC Whinnet, PCSO Lockwood and our Governor, Mr Bartlett came in to talk to our children about safety in the community.

A huge thank you to Chester Police for taking the time to support our school family.



Spring Term Parents' Evenings

Parents' Evenings for this term will take place after the February break.

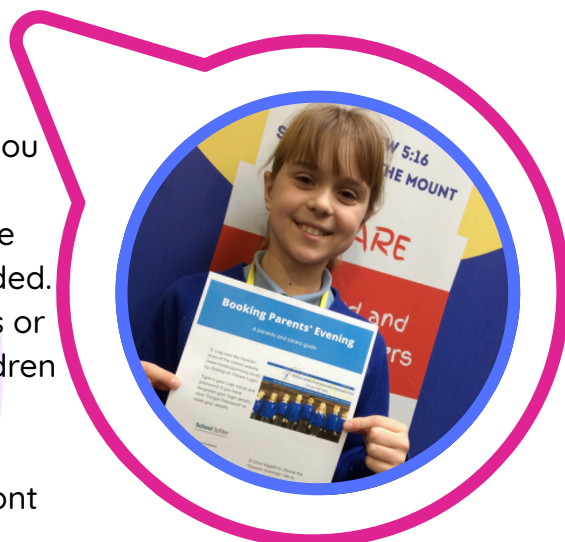
Dates are as follows:

Year group	Class teacher	Date of Parents' Evenings
Reception	Mrs Walsh – Team RW	Monday 23 rd February Tuesday 24 th February
	Miss McDonald – Team RM	Tuesday 24 th February Wednesday 25 th February
Year 1	Mrs Jeffs – Team 1J	Tuesday 24 th February Wednesday 25 th February
	Miss Hildebrandt – Team 1H	Monday 23 rd February Tuesday 24 th February
Year 2	Miss Carter – Team 2C	Monday 23 rd February Tuesday 24 th February
	Mrs King – Team 2K	Monday 23 rd February Tuesday 24 th February
Year 3	Mrs Elston and Mrs Inns – Team 3EI	Tuesday 24 th February Thursday 26 th February
	Mr Underhill – Team 3U	Monday 23 rd February Tuesday 24 th February
Year 4	Mrs Kelly and Mrs Jones – Team 4JK	Wednesday 25 th February Thursday 26 th February
	Miss Cotgreave – Team 4C	Monday 23 rd February Tuesday 24 th February
Year 5	Mrs Salisbury – Team 5S	Tuesday 24 th February Wednesday 25 th February
	Miss Rennocks – Team 5R	Tuesday 24 th February Wednesday 25 th February
Year 6	Mrs Millington – Team 6M	Tuesday 24 th February Wednesday 25 th February
	Miss Buckley – Team 6B	Tuesday 24 th February Wednesday 25 th February

Parents/carers may book appointments via the school website www.hooleceprimary.co.uk or via the School Spider app. The booking instructions have been emailed to families but can also be found on our website, www.hooleceprimary.co.uk/letters.

If you would prefer a telephone consultation at the time you have booked, please make contact with the school office via email to admin@hooleceprimary.cheshire.sch.uk, so we can check contact details and update records where needed. Unless we hear from families, we will assume that parents or carers are attending in person. Please avoid bringing children for the appointments where possible.

Please enter school for your appointment via the main front door by the School Office.



Clubs During Parents' Evenings

The following clubs will not run during Parents' Evening week:

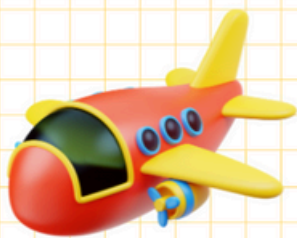
Day	Clubs that are cancelled	Clubs that are running
Monday	R Ballet R-6 Choir 1-2 Indoor Games 3-4 Football 5-6 Science 5-6 Netball	5-6 Boys Football
Tuesday	All clubs & Boosters are cancelled	
Wednesday	R-1 Art 2-6 Beacons 3-4 Arts & Crafts	1-6 Streetdance 5-6 Girls' Football
Thursday		All Clubs & Boosters on
Friday		All Clubs on

Beware, it's a Vikings Invasion!



Year 5 have been having great fun this week creating Viking implements in preparation for their Viking Experience Day in March!

Holidays during term time: What the rules mean for me



From September 2024, the new National Framework for issuing penalty notices has applied.



As a school, we fully appreciate the financial difficulties that some parents face when booking holidays, particularly during school holidays.

However, school is duty bound to comply with the regulations set by the local authority and national protocols.

A Fixed Penalty Notice (FPN) is a fine which may be issued for taking children out of school during term time for the purpose of leisure or recreation.



Second Offence

(Within 3 years of the first offence)

Where it is deemed appropriate to issue a second Penalty Notice to the same parent for the same pupil within 3 years of the first notice. The second Penalty Notice will be charge at:

£160 per parent, per child paid within 28 days
(Unpaid Penalty Notices after 28 days may result in a prosecution)

Example: We are a family of 2 children and 2 parents.

Child 1	child 2	Parent 1	Parent 2	
£160	£160	£320	£320	= £640

The 10 school week period may span different terms or school years (e.g. 2 sessions of unauthorised absence in the Summer Term and a further 8 within the Autumn Term).

First Offence

The first time a Penalty Notice is issued for a Term Time Holiday or Irregular School Attendance, the Penalty Notice will be charged at:

£160 per parent, per child paid within 28 days.
Reduced to £80 per parents, per child if paid within 21 days

Example: I'm a single parent of 2 children and we want to go on holiday for a week in term time.

Your holiday will not be authorised and you should speak to school before booking because your child will miss 5 school days, you will be issued a penalty notice fine.

Child 1	child 2	Parent
£160	£160	£320

The initial fine is £320 but if paid within 21 days it will be reduced to £160

Third Offence

(Within 3 years of the First Offence)

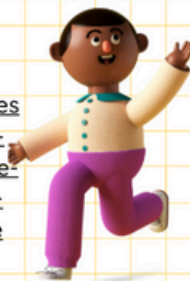
The third time that an offence is committed for either a term time holiday and/or irregular attendance, a Penalty Notice will not be issued. The case may be proceeded straight to prosecution/court.

The 3 year period can cover primary and secondary school periods eg: first offence in year 5 of primary and 2nd offence in year 7.



For more information:

www.cheshirewestandchester.gov.uk/residents/education-and-learning/early-years-and-childcare/education-welfare-service/fixed-penalty-notices/taking-children-on-holiday-during-term-time



Multiplication Musical



Our fabulous Year 4 children are looking forward to dazzling parents and carers with a 'Multiplication Musical' on Thursday 12th February!

The aim of this production is to encourage the children to practise their times tables through singing, dancing and acting, while also giving them the opportunity to perform in front of an audience!



Year 4 Parents and carers are invited to attend the performances, either at 3.25pm or 4.55pm. Please return your slips with your preference of show to the School Office.

On the day, entry to the show will be via the External Hall Door, by the public play park. Please wait there at your preferred time.

Times Tables Rockstar Championship





JOIN US FOR THE 2026

GEOGRAPHY WORKSHOP

Presented by children from Reception - Year 6!



EXPLORE
OUR EXCITING
GEOGRAPHY
CURRICULUM ACROSS
ALL YEAR GROUPS!



**UNLOCK THE
SECRETS**
OF OUR WORLD
WITH OUR CLASS
SHOWCASES!

**WEDNESDAY
11TH MARCH**



DATE
11th March



TIME
3.45-4.45pm



LOCATION
School Hall



Parents and carers are invited to join us in the School Hall for a special Geography showcase presented by children from all year groups!

Journey around the world with us and discover its secrets!

R

Human
Geography

2

Contrasting
localities

4

Africa

6

Ordinance
Survey Maps &
Grid References

1

Weather &
Climate

3

Mountains &
Rivers

5

North & South
America



Part of
CDLT
Cherwell District
Learning Trust

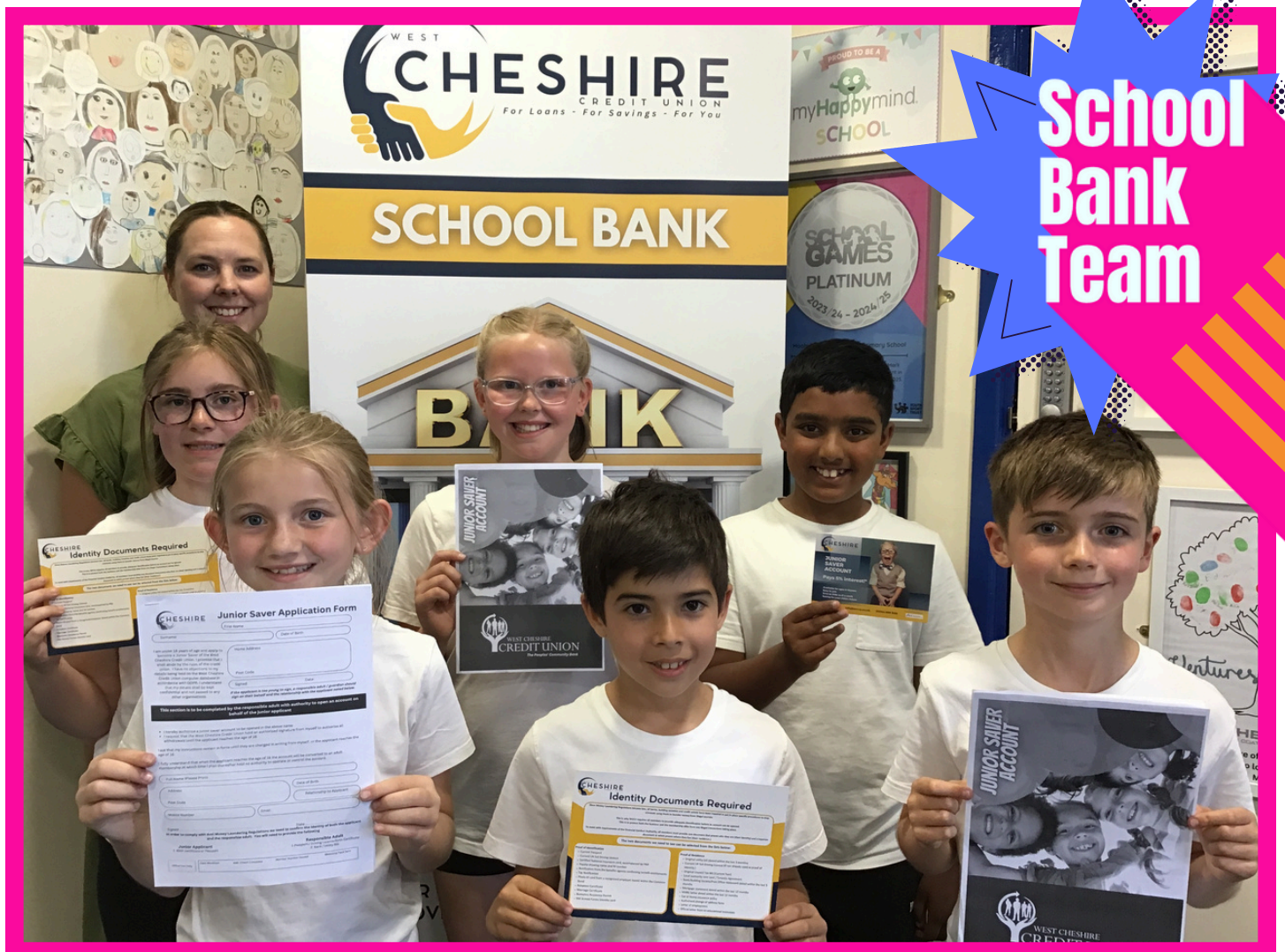
JOIN OUR SCHOOL BANK!



As a school, we recognise that children's attitudes towards money are largely formed between the ages of 3 and 7 and we want children to learn the importance of managing money well. To this end, we have partnered with the Credit Union in Chester and offer all pupils the opportunity to open a bank account in school. They can **deposit money in our school bank every Thursday morning** and this will be credited to their bank account.

The bank is run by pupils from the school and overseen by Miss Rennocks. Should children wish to withdraw money this can be done at the Credit Union in Chester. Over the last two years we have seen children's understanding of the choices money offers them increase, children can talk about why they are saving and know that by saving now, they will have more to spend later. It is our hope that by doing this, we are helping children develop habits that will serve them well as adults.

All children at school are welcome to open a bank account. If you would like more details, pop into the school office and Mrs Watling will be able to give you an application form.



Friday Assembly

Parents and carers are invited to Friday Assembly when their child's class is presenting. Please arrive at 2.25pm for a 2.30pm start. If you are able to join us, please refrain from parking in the visitors car park as the gates will close during the assembly.

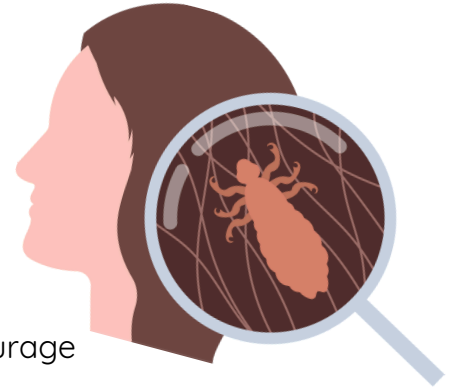
Date	Class
6th February	Team 6B
13th February	Team 6M
6th March	Team RM
13th March	Team RW
20th March	Team 5R
27th March	Team 4JK
1st May	Team 3U
8th May	Team 2C
15th May	Team 1J
21st May	Team 5S
12th June	Team 4C
19th June	Team 3EI
26th June	Team 2K
3rd July	Team RM
10th July	Team RW
17th July	Team 1H

Stop the Spread!

We are currently experiencing cases of head lice in school.

Head Lice is a continual problem in schools and we ask parents and carers to check your child's hair regularly for lice, and if found, treat them accordingly.

- ☒ regularly check your children's hair
- ☒ teach older children to check their own hair
- ☒ tie back and braid long hair
- ☒ keep a fine tooth head lice comb in the bathroom and encourage all family members to use it when they wash their hair



Community Clothing Cabin

KIT YOUR CHILD OUT FOR THE SPRING SEASON FOR FREE WITH A TRIP TO THE CHILDREN'S COMMUNITY CLOTHING CABIN!

Our Community Clothing Cabin is the blue building located next to the school bike sheds at the front of school, nearest the main playground and the staff car park.



The cabin contains pre-loved clothing and footwear for children of all ages. All items are clean and in good condition. There is a wide selection of ready to wear clothing and footwear in a range of sizes. There is no charge for any items.

The Community Clothing Cabin is open every school day from 8am to 4.30pm.

We sustain our Community Clothing Cabin by collecting pre-loved items of clothing or footwear from our families so that this facility remains well-stocked. Providing this service also enables us to promote a positive message about sustainability, recycling and reusing items to our school family.



Next Week's School Dinner Menu

Provided by
Edsential

HOOLE CE PRIMARY SCHOOL WEEK 2 LUNCH MENU

Monday	Tuesday	Wednesday	Thursday	Friday (Meat Free)
2 slices of Cheese & Tomato Pizza (V), served with Baked Beans, Seasonal Vegetables or Coleslaw	Beef Burger or Veggie Burger in a Bun, Hash Brown served with Baked Beans or Seasonal Vegetables	Roast Gammon or Quorn Fillet served Roast/Mashed Potatoes, Seasonal Vegetables & Gravy	3 Cheese & Tomato Pasta (V) served with Crusty Bread & Seasonal Vegetables	Breaded Fish or Veggie Fingers served with Chips, Baked Beans or Peas
Jacket Potato with Cheese, Beans or Tuna	Jacket Potato with Cheese, Beans or Tuna	Jacket Potato with Cheese, Beans or Tuna	Jacket Potato with Cheese, Beans or Tuna	Jacket Potato with Cheese, Beans or Tuna
Tomato & Herb Pasta Pot	Tomato & Mascarpone Pasta Pot	Cheese & Tomato Pasta Pot	Hot Cheese & Tomato Baguette	Cheesy Bean Pasta Pot
Ham, Tuna or Cheese Sandwich	Ham, Tuna or Cheese Sandwich	Ham, Tuna or Cheese Sandwich	Ham, Tuna or Cheese Sandwich	Ham, Tuna or Cheese Sandwich
Caramel Crispy Bar	Butterscotch Biscuit	Chocolate Muffin	Apple & Grape Pot or Biscuit	Ginger Biscuit



Birthdays

**ANNA,
ERNIE,
ELIJAH, MUSA,
ELISHA,
OLIVIA E,
TRIXIE &
COLE!**

**Many happy returns
to all our birthday
buddies!**
**We hope you enjoy
your birthday book!**

LETTING THEIR LIGHT SHINE!

George was awarded the Man of the Match trophy at Saughall FC for scoring 2 goals!



Martha made this fabulous dolls house!



Ahmet was awarded a trophy from Newton Athletic FC after he scored 2 goals in a recent match!

Ivy was made Dancer of the Week at Streetdance Club!



Chris won Player of the Match for his Team Chester Nomads 'Jaguars' this weekend.



Isabelle gained her 10m swimming certificate!



Hetty came first in a solo dance competition! She has also discovered some amazing finds with her metal detector!



Let's Celebrate

The following children received a class honour for letting their light shine this week!

Zara M

Jasmine S

Elijah H

Amber M

Seren H-E

Jack R

Sophia W

Ruhaani S

Elijah L

Tawsif A

Nancy P

Isla Parker

Harriet B

Finley R

Alfie M

Maddie K

Key Dates

4 th February	Parent SATs Information Event 5.30pm
5 th February	Early Help Navigator outside from 8.40am
12 th February	Year 4 Multiplication Musical
16 th - 20 th February	School Holidays
23 rd - 26 th February	Parents' Evenings
3 rd March	Year 5 Viking Day
5 th March	Early Help Navigator outside from 8.40am
5 th March	World Book Day
10 th March	Year 1 Trip
17 th March	Year 4 Brass Concert (TBC)
18 th March	Y2 Curriculum Showcase at All Saints' Church
25 th March	Easter Lunch (Change to usual dinner menu)
1 st April	Year 4 Trip
2 nd - 19 th April	School Holidays

Contact us



01244 323890



admin@hooleceprimary.cheshire.sch.uk



www.hooleceprimary.co.uk





(HALFTERM) CAMP

WEDNESDAY 18TH FEBRUARY

9AM til 12PM ■ AGES 7 - 11

12PM til 3PM ■ AGES 12 - 18

THURSDAY 19TH FEBRUARY

9AM til 12PM ■ AGES 7 - 18

at ELLESMERE PORT SPORTS VILLAGE

**£55 FOR BOTH
DAYS**

All campers will receive a **Ticket** to
Cheshire Phoenix vs Surrey 89ers
on the 22nd February

BOOK NOW: Youthbb@cheshirephoenix.com



POPCORN GAME

FRI 6 FEB | 7.30PM | EPSV

SPONSORED BY

HICKORY'S
SMOKEHOUSE
THE SOUTHERN TASTES
OF AMERICA
★★★★★

ALL TICKETS

£10

FAMILY TICKET £39.99
(2 ADULT & 3 KIDS)




POWERED BY
**LEVELLING
— UP —**

Starts
11th March

The Wednesday Club

Join the Wednesday Club from 3:30 to 5.00 PM every Wednesday during term time at Hoole Community Centre!

Primary school children can enjoy crafting and colouring, board games, dressing up, reading and homework help, junk modelling and more.

FREE! including drinks and snacks

The Wednesday Club is staffed but all children must be accompanied by a parent or guardian. No need to book.

 Funded by UK Government

 01244 342741

 volunteer@hoolecommunitycentre.org.uk



**NEW JUNIOR SQUASH
MEET THE COACHES
SAT 31 JANUARY
9.30-10.30AM**

CHESTER RUGBY CLUB, HARE LANE, CH3 7DB

If your son or daughter is interested in learning to play squash, having fun and developing new skills then come along to meet the coaches and find out about our exciting plans. The juniors are welcome to join the coaches on court for a short introduction to the game.

Coaches are: Robbie Blair & Jill Maher

 **REGISTER YOUR
INTEREST NOW FOR
MARCH 2026.
ALL ABILITIES WELCOME
AGE 8-16**

Email: jill@nextgensquash.co.uk



ALL COACHES HAVE ENHANCED DBS CERTIFICATES