



**16TH JANUARY
2026**



Message from Headteacher

Parking Enforcement

I wrote to families this week regarding enforcement patrols which have visited our school regularly this year.

This increase in enforcement activity due to concerns raised by members of the local community about parking and traffic around our school site at peak times.

I spoke to the enforcement officer who was at school on Monday afternoon. He informed me that patrols will increase over coming months and that there will also be a mobile camera van visiting our site.

Please continue to ensure that you are parking and driving responsibly around our school site. Any cars parked on any double yellow lines or on the white markings on the road in front of school will receive a penalty ticket. In addition, I was informed yesterday that if a car stops briefly on the school markings or double yellow lines for someone to jump out to come to collect a child, a penalty ticket will also be issued.

Thank you for your continued support and cooperation.

Medication in School

Parents/carers will be aware that we can administer antihistamine (Piriton/Piriteze) and pain relief medication (Calpol) in school if needed, provided that families have authorised this. If your child needs medication regularly, please bring in a supply of medication for your child so that emergency school stock is not diminished.

Please may I request that parents/carers ensure that children do not bring Calpol tablets into school in their pockets or bags. Any Calpol taken in school needs to be administered and recorded by a member of staff.

Message from Headteacher

Flagship School Status & Visitors to Hoole

We have got a lot going on over the coming weeks.

We have been recognised as a flagship school for The Literacy Company. We have held flagship status for the last two years, in recognition of the strength of teaching in this area.

On 27th January, we will welcome visitors from many local schools to Hoole.



We will be hosting a training session for teachers from schools across Cheshire. Our visitors will visit classrooms to see our writing lessons in action and learn about successful approaches.

We have invested a lot into improving writing in our school since 2019. Last year, 86% of children attained at least expected standard in writing, compared to 72% nationally. This is made even more special by the fact that our pupils' work was checked by representatives from the Local Authority and the accuracy of our assessments validated and highly commended.

However, you know us! We never stop and we plan to continue to develop the teaching of writing even further this year. Our focus is to ensure that children have strong skills and confidence in editing and improving their own writing using their teacher's feedback as a starting point.

Clubs

We look forward to welcoming children to clubs next week. There is a lot on offer! To have so many clubs available to so many children is highly unusual and we are unique in providing so many after-school opportunities free of charge.

As always, I would like to thank all of the staff who give up their talents and time so generously to run clubs after the school day. This shows their dedication and commitment to pupils and to our school vision "Let your light shine."

We consider after school activities as a way for children to find new ways of shining brightly, discovering talents and feeling proud of themselves. This term, we may find the next Ronaldo, Margot Fonteyn or Laurence Olivier! Here's hoping!

Cheshire Phoenix

Later in this newsletter, you will read about the Hoops for Health session Year 6 enjoyed with players from Cheshire Phoenix basketball team this week.

I wanted to share with you the comment the Phoenix team left in our school Visitors' book. "Fantastic school. Children listened really well and asked great questions. Always a pleasure coming in to Hoole."

Your children are always highly commended by visitors on their behaviour and engagement. They really are a credit to their families, themselves and their school.



PLEASE JOIN US FOR THE

PTA MEETING



WEDS 28TH JAN AT 6.30PM

BAWN LODGE, HOOLE ROAD

AGENDA

Create a plan of fundraising events and ideas for the rest of the school year!

WHY ATTEND PTA MEETINGS?

Come and discover the School PTA, explore ways you can get involved, and learn about the positive impact you can make on our School and its students.

UNABLE TO ATTEND?

We would love your input! If you have any ideas or want to be involved please email us at ptahoole@gmail.com

Hope to see you there!

Class Worship

This week we learned about the 1 Billion Followers Summit in Dubai where people at the event use their fame to share kindness. This is part of the 1 Billion Acts of Kindness campaign.

Children discussed how we have the opportunity every day to influence people by spreading positive messages and as we say in school "to give out good".

As a school, we look for and celebrate where we have taken opportunities to give out good and we know that each act of kindness, big or small, makes our world a better place.

We looked at the Bible verse 1 Timothy 4: 12 "Don't let anyone look down on you because you are young, but set an example for the believers in speech, in conduct, in love, in faith and in purity" which reminds us that young people can set a powerful example through their words, and actions towards others.

Questions you could ask your child:

When you need help deciding, who is a good person to talk to? Why?

How can you help others make good choices?

What values are important to you?

How do these affect how you behave?

Cheshire Phoenix Visit

We were very excited to welcome some members of the Cheshire Phoenix Basketball team in school this week. Year 6 worked with the players and staff in a number of sessions all about the importance of looking after our bodies. They learnt some basketball skills from a professional and discussed what would make a healthy meal for a basketball player before an important match. The children also learnt about the dangers of smoking - we were all amazed by the number of harmful chemicals in a cigarette.

Cheshire Phoenix are second in the league and are playing at home (Ellesmere Port Sports Village) at 5.30 this Sunday. Go and watch them!!



Multiplication Musical



Our fabulous Year 4 children are looking forward to dazzling parents and carers with a 'Multiplication Musical' on Thursday 12th February!

The aim of this production is to encourage the children to practise their times tables through singing, dancing and acting, while also giving them the opportunity to perform in front of an audience!



Year 4 Parents and carers are invited to attend the performances, either at 3.25pm or 4.55pm. Please return your slips with your preference of show to the School Office.

On the day, entry to the show will be via the External Hall Door, by the public play park. Please wait there at your preferred time.

Times Tables Rockstar Championship



Friday Assembly

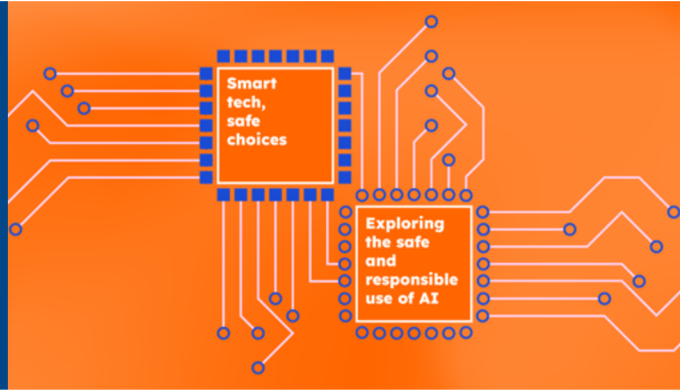
Parents and carers are invited to Friday Assembly when their child's class is presenting. Please arrive at 2.25pm for a 2.30pm start. If you are able to join us, please refrain from parking in the visitors car park as the gates will close during the assembly.

Date	Class
23rd January	Team 2K
30th January	Team 1H
6th February	Team 6B
13th February	Team 6M
6th March	Team RM
13th March	Team RW
20th March	Team 5R
27th March	Team 4JK
1st May	Team 3U
8th May	Team 2C
15th May	Team 1J
21st May	Team 5S
12th June	Team 4C
19th June	Team 3EI
26th June	Team 2K
3rd July	Team RM
10th July	Team RW
17th July	Team 1J



SAFER INTERNET DAY 2026

Together for a better internet



With Safer Internet Day coming up, this year's theme focusses on 'Smart tech, safe choices – Exploring the safe and responsible use of Artificial Intelligence' (AI).

Everyone's talking about AI, and with many children and young people hearing about and using AI online, it's important they have the skills and confidence to make safe choices when they are using smart technology.

Safer Internet Day will be exploring the impact of AI on all of our lives, looking at how AI can be used for good, and giving advice and guidance that empowers people to use AI safely and responsibly.

TOP TIPS for Primary School Children

Understand what AI is and how it can be used

Artificial intelligence technology is used by lots of people every day. AI suggests videos on streaming apps like Disney+ and Netflix, gives directions on map apps, can help translate different languages.

Consider how using AI can impact you and other people

Like a lot of other technology, AI can save us time and energy. You could use it to find the answer to a question, to check your spelling, or to create images or videos. Whilst AI can be a great tool, it's important that we think about when and how we are using AI, and don't use it in place of our own thinking and creativity, or to do things that may upset or worry other people.

Remember that AI is technology and isn't perfect

Even though it might seem like it knows everything, AI can still get things wrong. If you are using AI to get information or help with something, it is important to think carefully about what it tells you and remember that it should never replace support from people you know and trust. If you are ever unsure about something AI has told you, check with other sources, this could include looking on websites you trust or talking to an adult.

Look out for signs that something might be AI generated

It can feel hard to tell if something has been created using AI or not. Some websites and apps will tell you that AI was used, but this doesn't always happen. There are some signs you can look out for including if it looks surprising or shocking, if it looks too perfect, or if there are details you know aren't true. If you see something you are not sure is created using AI or not, speak to an adult about the signs they look for and try to work it out together.

Next Week's School Dinner Menu

Provided by
Edsential

HOOLE CE PRIMARY SCHOOL WEEK 3 LUNCH MENU

Monday	Tuesday	Wednesday	Thursday	Friday
2 Slices of Texas BBQ Pizza (V) served with Baked Beans, Seasonal Vegetables or Coleslaw	Oven Baked Sausage Roll or Cheese & Onion Roll, Mashed Potato served with Baked Beans or Seasonal Vegetables	Chicken or Quorn in a Katsu Curry Sauce served with Rice, Naan Bread & Seasonal Vegetables	Spaghetti Bolognese served with Seasonal Vegetables	Cod/Salmon Fish Fingers or Veggie Fingers served with Chips, Baked Beans or Peas
Jacket Potato with Cheese, Beans or Tuna	Jacket Potato with Cheese, Beans or Tuna	Jacket Potato with Cheese, Beans or Tuna	Jacket Potato with Cheese, Beans or Tuna	Jacket Potato with Cheese, Beans or Tuna
Tomato & Herb Pasta Pot	Tomato & Mascarpone Pasta Pot	Cheese & Tomato Pasta Pot	Hot Cheese & Tomato Baguette	Cheesy Bean Pasta Pot
Ham, Tuna or Cheese Sandwich	Ham, Tuna or Cheese Sandwich	Ham, Tuna or Cheese Sandwich	Ham, Tuna or Cheese Sandwich	Ham, Tuna or Cheese Sandwich
Toffee Cake	Golden Crunch Biscuit	Chocolate Mudslide Cookie	Watermelon Wedge or Biscuit	Rice Crispy Cookie



Birthdays

**LUCY, JAKE,
NORAH,
TROY, BORIS,
OLIVER, SAM,
EMILY &
RALPH!**

**Many happy returns
to all our birthday
buddies!**
**We hope you enjoy
your birthday book!**



Young Artists' Summer Show

Do you love making art at home? Then this opportunity is for you!

The Young Artists' Summer Show is run by the Royal Academy of Arts. It is open to young artists aged 4-18 to make and share a piece of artwork that truly expresses their own voice.

There is no set theme and we welcome submissions covering a range of techniques including drawing, painting, printing, photography, sculpture, textile, fashion, animation, video, and more.

Judges are looking for original artwork, imagination and skill. Each artist can submit one piece of artwork along with a short description, written in the artist's own words. Describe why it was created and what it means to them in no more than 80 words. AI generated images may not be used.

The deadline to submit your artwork to the School Office is Wednesday 25th February. You must label it with your name and class. It must also be accompanied with the written description of no more than 80 words.

Good luck to everyone taking part!

Mrs Elston & The Art Ambassadors

Spring Term Clubs

Our Spring Term Clubs start next week. Please see the club information below, which advises the times that the clubs finish and where to collect your child.

As there are so many clubs finishing at similar times, please ensure you are prompt when collecting your child and are waiting at the correct exit to ensure a smooth process.

If you know you are going to be late, please contact the School office on 01244 323890.

SPRING TERM CLUBS

DAY	CLUB	INFORMATION
MONDAY	R-6 Choir	Starts 19th January. Runs 3.15pm-4.10pm. Delivered by staff for free. Collect children from side gate by playpark unless they are in hetty.
	R Ballet	Starts 19th January. Runs 3.15pm-4pm. Delivered by staff for free. Collect children from school office unless they are in hetty.
	1-2 Indoor Games	Starts 19th January. Runs 3.15pm-4pm. Delivered by staff for free. Collect children from school office unless they are in hetty.
	3-4 Football	Starts 19th January. Runs 3.20pm-4.20pm. Delivered by staff for free. Collect children from side gate by playpark unless they are in hetty.
	5-6 Netball	Starts 19th January. Runs 3.20pm-4.20pm. Delivered by staff for free. Collect children from gate unless they are in hetty or have permission to walk home.
	5-6 Boys Football	Starts 19th January. Runs 3.20pm-4.20pm. Delivered by staff for free. Collect children from gate unless they are in hetty or have permission to walk home.
	5-6 Science	Starts 19th January. Runs 3.20pm-4.20pm. Delivered by staff for free. Collect children from school office unless they are in hetty or have permission to walk home.
TUESDAY	R-1 Lego	Starts 20th January. Runs 3.15pm-4pm. Delivered by staff for free. Collect children from school office unless they are in hetty.
	R Mindfulness	Starts 20th January. Runs 3.15pm-4pm. Delivered by staff for free. Collect children from school office unless they are in hetty.
	1-2 Active Play	Starts 20th January. Runs 3.15pm-4.10pm. Delivered by staff for free. Collect children from school office unless they are in hetty.
	3-4 Netball	Starts 20th January. Runs 3.20pm-4.20pm. Delivered by staff for free. Collect children from gate unless they are in hetty.
	5-6 Zentangle	Starts 20th January. Runs 3.20pm-4.20pm. Delivered by staff for free. Collect children from school office unless they are in hetty.
WEDNESDAY	R-1 Art	Starts 21st January. Runs 3.15pm-4pm. Delivered by staff for free. Collect children from school office unless they are in hetty.
	1-6 Streetdance	Starts 21st January. Runs 3.15pm-4.20pm. Delivered by Inspire Dance at a cost. Collect children from side gate by play park unless they are in hetty.
	2-6 Beacons	Starts 21st January. Runs 3.15pm-4.20pm. Delivered by All Saints' Church for free. Collect children from school office unless they are in hetty.
	3-4 Arts & crafts	Starts 21st January. Runs 3.20pm-4.20pm. Delivered by staff for free. Collect children from school office unless they are in hetty.
	5-6 Girls Football	Starts 21st January. Runs 3.20pm-4.20pm. Delivered by staff for free. Collect children from gate unless they are in hetty or have permission to walk home.
THURSDAY	2-4 Lego	Starts 22nd January. Runs 3.15pm-4.15pm. Delivered by staff for free. Collect children from school office unless they are in hetty
	3-4 Shakespeare	Starts 22nd January. Runs 3.20pm-4.20pm. Delivered by staff for free. Collect children from school office unless they are in hetty.
	5-6 Imaginative Art	Starts 22nd January. Runs 3.20pm-4.20pm. Delivered by staff for free. Collect children from School Office unless they are in hetty or have permission to walk home.
FRIDAY	4-6 Dodgeball	Starts 23rd January. Runs 3.20pm-4.20pm. Delivered by PK Sports at a cost. Collect children from School Office unless they are in hetty or have permission to walk home.
	5-6 Shakespeare	Starts 23rd January. Runs 3.20pm-4.20pm. Delivered by staff for free. Collect children from School Office unless they are in hetty or have permission to walk home.

**LETTING THEIR
LIGHT SHINE!**

Willow received
a certificate
when she
crossed the
equator!



Rory and his team
played at the
grounds of
Manchester City
football Club



Thea has been working
hard at home and planted
sweet peas for the garden!
She is watering them each
day and checking on them!
She has also planted some
veggies ready for our
veggie garden!



Let's Celebrate

The following children received a class
honour for letting their light shine this week!

Jake G

Arthur M

Taylor D

Amaya N

Darcie T

Anna P

Ahmet M

Miles B

Imogen W

Megan V

Leo A

Genevieve B

A-L

Key Dates

19th January	Clubs start
21st January	Year 5 Trip
29th January	Reception Parents Phonics Workshop 4pm
4th February	Early Help Navigator outside from 8.40am
12th February	Year 4 Multiplication Musical
16th - 20 th February	School Holidays
23rd - 26 th February	Parents' Evenings
5th March	Early Help Navigator outside from 8.40am
5th March	World Book Day
10th March	Year 1 Trip
18th March	Y2 Curriculum Showcase at All Saints' Church
25th March	Easter Lunch (Change to usual dinner menu)
1st April	Year 4 Trip
2nd - 19 th April	School Holidays

Contact us



01244 323890



admin@hooleceprimary.cheshire.sch.uk



www.hooleceprimary.co.uk



2026-2027 TERM DATES

For Period 1 September 2026 to 31st August 2027
(The scheme below meets the requirements for 195 days (teachers) and 190 days (pupils)).

Autumn Term	Tuesday 1 September – Friday 23 October 2026	39 days
	<i>Tuesday 1 September - Inset Day 1</i>	
<i>Pupil October Holidays:</i>	HALF TERM <i>Monday 26 October - Friday 30 October 2026</i>	
Autumn Term	Monday 2 November - Friday 18 December 2026	35 days
	<i>Monday 2 November - Inset Day 2</i>	
<i>Pupil & Staff Christmas Holidays</i>	<i>Monday 21 December - Friday 1 January 2026</i>	
Spring Term	Monday 4 January - Friday 12 February 2027	30 days
	<i>Monday 4 January – Inset Day 3</i>	
<i>Pupil and Staff Spring Holidays:</i>	HALF TERM <i>Monday 15 February – Friday 19 February 2027</i>	
Spring Term	Monday 22 February - Thursday 25 March 2027	24 days
<i>Spring Holidays</i>	<i>Friday 26 March - Friday 9 April (Bank Holiday – Good Friday 26 March)</i>	
Summer Term	Monday 12 April - Friday 28 May 2027	34 days
	<i>Monday 3 May – Bank Holiday</i> <i>Friday 28 May – Inset Day 4</i>	
<i>Pupil Whit Holidays</i>	<i>Monday 31 May - Friday 4 June 2027</i> <i>(Bank Holiday - Monday 31 May)</i>	
Summer Term	Monday 7 June - Wednesday 21 July 2027	33 days
	<i>Monday 7 June – Inset Day 5</i>	
<i>Summer Holidays</i>	<i>Summer holidays: Thursday 22 July - Tuesday 31 August 2027</i>	
	Total Number of School Days	190



We want to hear from you. If your child or young person (0-25) has SEND or additional needs, with or without a diagnosis, or maybe not yet identified then please take part in this year's Parent Carer Forum's (PCFs) Cheshire West & Chester SEND Survey.

Your experiences will help shape future services across health, education, social care and the community. For the first time in Cheshire West & Chester, the results will directly inform and measure progress in the SEND Strategy 2026/27, so your voice truly matters.

The survey is anonymous, and you can complete one for each child with SEND.
Need help? Contact: info@pcfcheshirewest.org or text/call 07900 840 867

You can complete the survey by using the link button below

PCF Survey 2026

Closing date February 6th 2026 - Don't miss out!



**SWETTENHAM
CHEMISTS**

NHS
Providing NHS services

**I can save you a
trip to your GP!**

**Skip GP
waiting times!**

**No appointment
needed!**



*Speak to our Pharmacists first if
you are experiencing any of the
7 common ailments below:*

- ✓ Sore throat in patients aged 5 years and over.
- ✓ Sinusitis in patients aged 12 years and over.
- ✓ Impetigo in patients aged 1 years and over.
- ✓ Shingles in patients aged 18 years and over.
- ✓ Infected insect bites in patients 1 years+.
- ✓ Uncomplicated water infections in women 16 - 64 years old.
- ✓ Earache in children aged 1-17 years old.

As part of the Pharmacy First service you may receive prescription strength or over the counter medication to help to treat your condition.

Ask your Pharmacist



Swettenham Chemists, 95 Kingsway, Newton, Chester, CH2 2LJ
swettenham.kingsway@gmail.com / 01244 327023

