



Message from Headteacher

Welcome back!

I have enjoyed welcoming children back to school this week. Thank you for returning them looking so smart and ready for the new term. We have lots planned and we are looking forward to another busy term of shining brightly.

On behalf of all of the staff, thank you again for the Christmas gifts and cards. Your generosity and support is much appreciated.

Uniform, Jewellery & Footwear

Please may I ask for your continued support with keeping standards high at our school.

Children should not wear any jewellery beyond a watch and small earrings. A reminder also that smartwatches with audio or video recording functions are not to be worn in school for safeguarding reasons.

School shoes are preferable. Where children wear black trainers, they should be completely black and not have any coloured stripes etc.

On Forest School or PE days, children should wear PE kit with their school jumper, school cardigan or a plain, dark coloured sweatshirt on their top half.

Thank you for your cooperation and support with this.

September 2026

We have seen great demand for places at our school for Reception in September 2026.

If you know anyone who has not yet applied who wants a place at Hoole, please encourage them to apply as a matter of urgency. The closing date for applications is 15th January.

If you know anyone who is still considering which school to apply for, please ask them to get in touch with us to arrange a visit before 15th January.

Message from Headteacher

Trading

Whilst we always encourage entrepreneurial spirit and genius ideas at our school, the trading, buying or selling of belongings is not permitted.

Please may I ask that you ensure your children do not bring items like crystals, trading cards to school to avoid any issues relating to this.

Chester Diocesan Learning Trust (CDLT)

On Monday 5th January, staff from our school joined with teams from the other CDLT schools for a joint INSET.

The keynote speaker was Marie Gentles OBE. Previously a headteacher, her award-winning work is recognised nationally and internationally due to its unusually high success rates.

Staff from our school found this training very valuable. We appreciated access to a specialist of the calibre of Marie Gentles as a result of CDLT membership.

There are lots of great things happening and developing with our CDLT partners. Several clusters are running to facilitate collaboration and sharing best practice. These include a Deputy & Assistant Headteacher group, an Early Years group, a group for staff who manage provision for children with special educational needs and an Attendance group.

The collaboration with other highly successful schools will help us to continue to enrich and develop our school.

Earlybird and Booster Learning Sessions

Some children have been invited to attend additional learning sessions either before or after school. These are completely free to families and are designed to help children to extend their skills and accelerate learning.

If your child is invited to additional learning sessions, please ensure they attend (even if they are not keen to do so!).

Suggestion Box

Did you know about the Suggestion Box by the School Office?

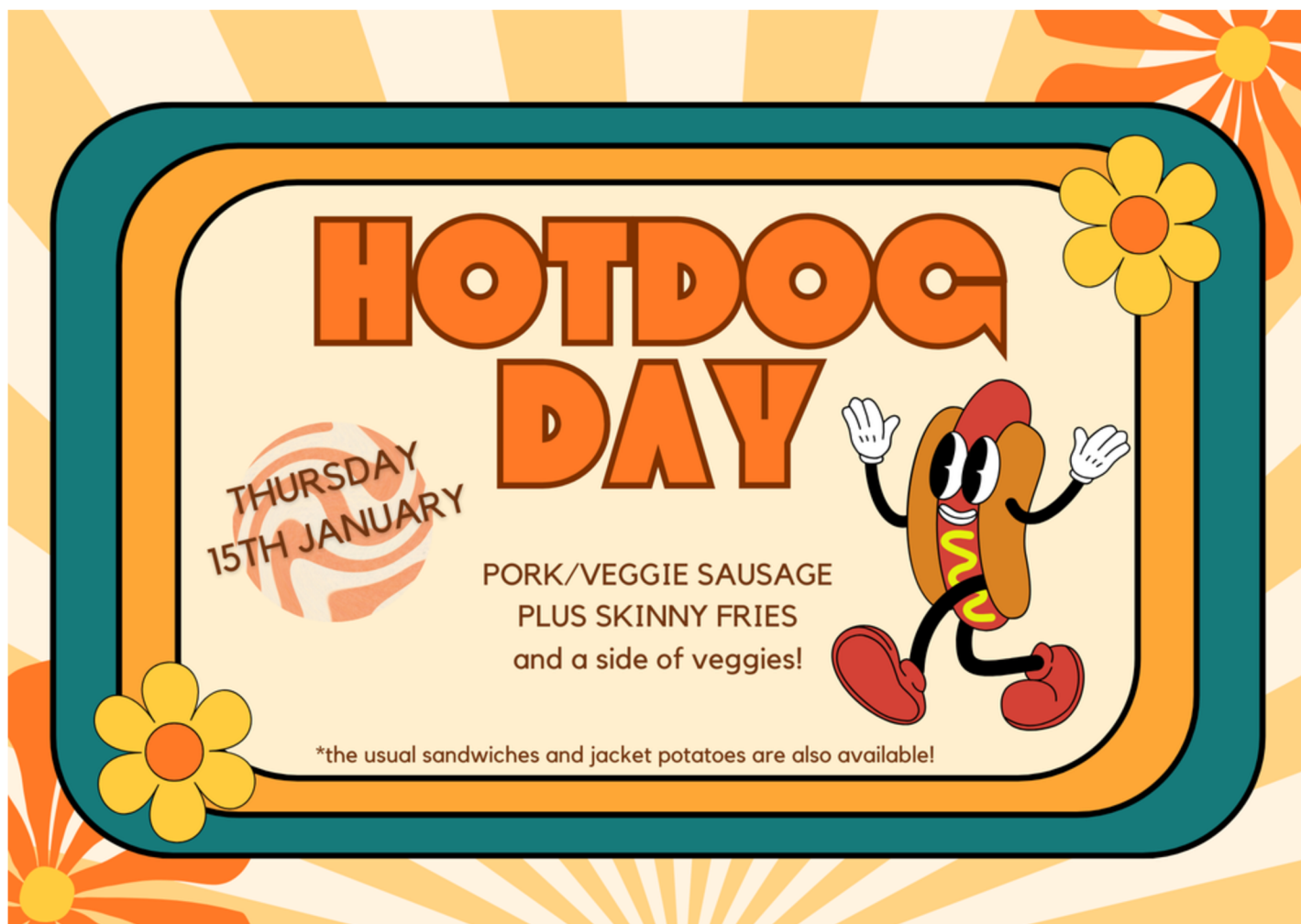
We really welcome your suggestions as your insights and opinions are highly valued by us. Your feedback will help us to improve our school so if you have any ideas, please feel free to share your thoughts by completing a suggestion slip and popping it in the box! Thank you in advance for your time and contribution.



Hotdog Day

In replacement of the normal menu on Thursday, we will be holding an American themed feast! On the menu will be hotdogs (Pork/Veggie), served with skinny fries and peas or beans. Alternatively, a selection of sandwiches and jacket potatoes will also be available on this day.

If your child would like to order a school lunch for this event, there's no need to pre-book; just let us know on the day. The usual £2.90 cost applies or free for those children in receipt of Free School Meals and for children in Reception and Key Stage 1.



School Bank



Just a reminder that the School Bank opens every Thursday from 8.30am for deposits.

If your child hasn't yet opened a bank account with Cheshire Credit Union and would like one, please collect an application form from the School Office. You will need proof of your address, some ID and your child's birth certificate to open an account.

Cheshire Phoenix Season Ticket

We have been very kindly gifted a school season ticket for Cheshire Phoenix Basketball matches.



We have been very kindly gifted a school season ticket for Cheshire Phoenix Basketball matches!

If you would like to loan the ticket to get admission free for your family into one the Phoenix home matches at the Ellesmere Port Sports Village, please contact the School Office to check for any dates the ticket has available for this season.

CHESHIRE PHOENIX HOME SCHEDULE 2025/26

Month	Date	Opponent	Time
SEPTEMBER	SUN 28	BOOKED ONIA GLADIATORS	5.30PM
OCTOBER	SUN 12	BOOKED ELD SHARKS	5.30PM
	SUN 19	BOOKED ASTLE EAGLES	5.30PM
	SUN 26	BOOKED ELD SHARKS	5.30PM
NOVEMBER	SUN 16	BOOKED ON LIONS	5.30PM
	SUN 23	BOOKED OL FLYERS	5.30PM
DECEMBER	SUN 07	BOOKED TER RIDERS	5.30PM
	SUN 28	BOOKED HESTER BASKETBALL	5.30PM
JANUARY	SUN 11	BOOKED ASTLE EAGLES	5.30PM
	SUN 18	BOOKED EY 89ERS	5.30PM
FEBRUARY	FRI 06	BOOKED HESTER BASKETBALL	7.30PM
	SUN 23	BOOKED EY 89ERS	5.30PM
MARCH	SUN 23	BOOKED OL FLYERS	5.30PM
APRIL	SUN 05	vs LONDON LIONS	5.30PM
	SUN 12	BOOKED EDONIA GLADIATORS	5.30PM
	SUN 20	BOOKED TER RIDERS	5.30PM

*Fixtures subject to change

ALL GAMES PLAYED AT ELLESMERE PORT SPORTS VILLAGE

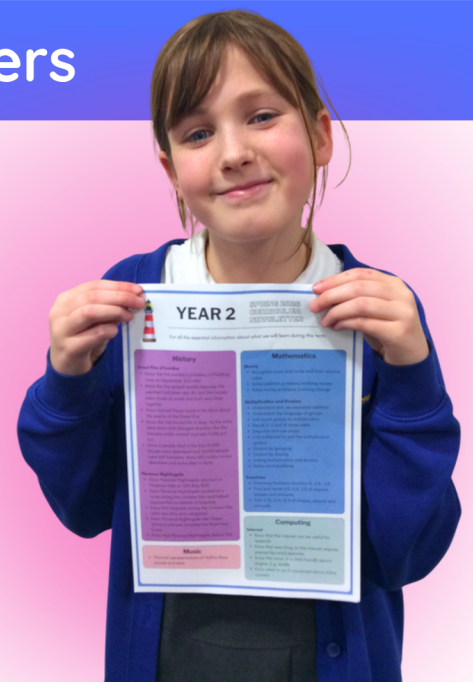
Curriculum Newsletters

Curriculum newsletters were sent earlier this week, to inform families about this term's learning topics for all year groups.

This information is also be available in the Curriculum section of the school website, www.hooleceprimary.co.uk/pages/curriculum.

We hope that details of the topics your children are studying this term will be helpful to parents and carers in supporting learning at home.

Parents' Evenings for this term will take place in February. Further information to follow.



Friday Assembly

Parents and carers are invited to Friday Assembly when their child's class is presenting. Please arrive at 2.25pm for a 2.30pm start. If you are able to join us, please refrain from parking in the visitors car park as the gates will close during the assembly.

Date	Class
16th January	Team 3EI
23rd January	Team 2K
30th January	Team 1H
6th February	Team 6B
13th February	Team 6M
6th March	Team RM
13th March	Team RW
20th March	Team 5R
27th March	Team 4JK
1st May	Team 3U
8th May	Team 2C
15th May	Team 1J
21st May	Team 5S
12th June	Team 4C
19th June	Team 3EI
26th June	Team 2K
3rd July	Team RM
10th July	Team RW
17th July	Team 1J

Next Week's School Dinner Menu

Provided by
Edsential

HOOLE CE PRIMARY SCHOOL WEEK 2 LUNCH MENU

Monday	Tuesday	Wednesday	Thursday	Friday (Meat Free)
2 slices of Cheese & Tomato Pizza (V), served with Baked Beans, Seasonal Vegetables or Coleslaw	Beef Burger or Veggie Burger in a Bun, Hash Brown served with Baked Beans or Seasonal Vegetables	Roast Gammon or Quorn Fillet served Roast/Mashed Potatoes, Seasonal Vegetables & Gravy	3 Cheese & Tomato Pasta (V) served with Cheese Bread & Seasonal Vegetables	Breaded Fish or Veggie Fingers served with Chips, Baked Beans or Peas
Jacket Potato with Cheese, Beans or Tuna	Jacket Potato with Cheese, Beans or Tuna	Jacket Potato with Cheese, Beans or Tuna	Jacket Potato with Cheese, Beans or Tuna	Jacket Potato with Cheese, Beans or Tuna
Tomato & Herb Pasta Pot	Tomato & Mascarpone Pasta Pot	Cheese & Tomato Pasta Pot	Hot Cheese & Tomato Ragout	Cheesy Bean Pasta Pot
Ham, Tuna or Cheese Sandwich	Ham, Tuna or Cheese Sandwich	Ham, Tuna or Cheese Sandwich	Ham, Tuna or Cheese Sandwich	Ham, Tuna or Cheese Sandwich
Caramel Crispy Bar	Butterscotch Biscuit	Chocolate Muffin	Apple & Grape Pot or Biscuit	Ginger Biscuit



AVAILABLE DAILY: FRESHLY MADE SALAD, FRESH BREAD, FRUIT YOGHURT, FRESH FRUIT, CHILLED WATER
FOR ALLERGEN INFORMATION, PLEASE ASK ONE OF OUR CATERING TEAM

Birthdays

LENA, INCI,
LOGAN,
ZOFIA, VOVA,
FINLAY &
TOBY!

Many happy returns
to all our birthday
buddies!
We hope you enjoy
your birthday book!

LETTING THEIR
LIGHT SHINE!

George achieved
his 7th Kup Green
Stripe Belt belt in
his Martial Arts
class!



Key Dates

15th January

Hot Dog Day (Change to usual dinner menu)

19th January

Clubs start

21st January

Year 5 Trip

4th February

Early Help Navigator outside from 8.40am

16th - 20th February

School Holidays

5th March

Early Help Navigator outside from 8.40am

5th March

World Book Day

18th March

Y2 Curriculum Showcase at All Saints' Church

25th March

Easter Lunch (Change to usual dinner menu)

2nd - 19th April

School Holidays

Contact us



01244 323890



admin@hooleceprimary.cheshire.sch.uk



www.hooleceprimary.co.uk





CHESTER
CATHEDRAL

BE A CHORISTER FOR A DAY

BOYS | SATURDAY 17 JANUARY | 1.30 – 5PM

GIRLS | SATURDAY 24 JANUARY | 1.30 – 5PM

Does your child love to sing?

Chester Cathedral is seeking boys and girls aged 5-11 to join the prestigious Cathedral Choir.

Enjoy a fun-filled afternoon of singing games and rehearsals culminating in a service of Choral Evensong at the end of the afternoon.

All welcome, no experience necessary.

For more information and to register for this free event, please contact Dan Mathieson on dan.mathieson@chestercathedral.com



UK Health
Security
Agency

NHS

Think measles!

Measles is circulating, it's very infectious and can make you very ill if you catch it.

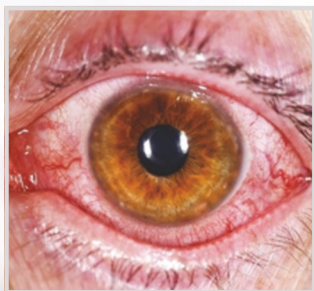
You can catch measles at any age. If you are unvaccinated and get measles you can easily spread the illness to anyone unvaccinated.

The MMR vaccine is safe and effective. You need 2 doses of MMR at least one month apart to be fully protected against measles, mumps and rubella. It's time to make measles a disease of the past.

It's never too late to be vaccinated.

Measles symptoms include: high fever; sore, red, watery eyes; coughing; aching and feeling generally unwell; a blotchy red brown rash, which usually appears after the initial symptoms.

If you or your child have symptoms of measles, contact NHS111 or speak to your GP Practice.



**For more information speak to your
GP, surgeon, or read the leaflet from the
QR code or visit: www.nhs.uk/mmr**