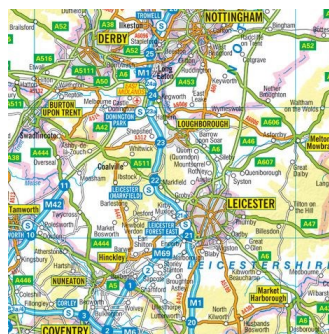


Knowledge Organiser	Topic: Burwardsley	Term: Spring	Year Group: 5
---------------------	--------------------	--------------	---------------



## Vocabulary Dozen

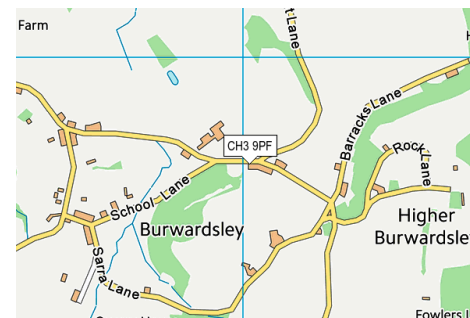
'A' and 'B' Roads	'A' roads are major roads and 'B' roads are minor roads.
Rural	A rural area is generally outside of a town or city in the countryside. Usually with a low population density.
Ordnance Survey	A detailed map showing the features of a landscape using a variety of symbols.
Physical Features	A natural feature on the surface, such as water, mountains, and deserts.
Human Features	Human features are things that are built by humans (bridges & roads etc.)
Contour Lines	Show the height of land above sea level and how steep a hill or valley is.
Grid Reference	A grid reference is a way of finding a location on a map.
Human Activity	How humans use the land.
Economic Activity	The buying and selling of goods and services. Sometimes known as 'trade'.
Compass	A compass is an instrument used for navigation and orientation.
Orienteering	Navigating in sequence between points marked on an orienteering map.
Population	The amount of people who live in a certain area.



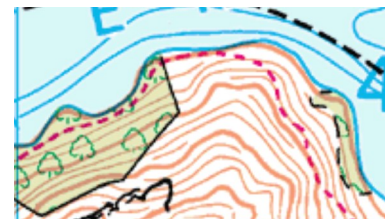
On a road map, motorways are blue. 'A' roads are usually green. 'B' roads are usually orange.



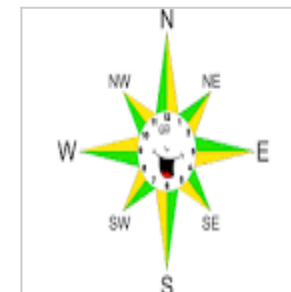
Willow Wood in Burwardsley. This is a physical feature.



An Ordnance Survey map, symbols are used to show the detailed features of the land, human and physical. Grid references are used to help find a location.



Contour lines show steep the land is. The closer together, the steeper it is.



An 8-point compass.



A farm in Burwardsley. This shows human activity and also economic activity.

Burwardsley is a rural area. It is characterised by a small population, farm land and hills.

