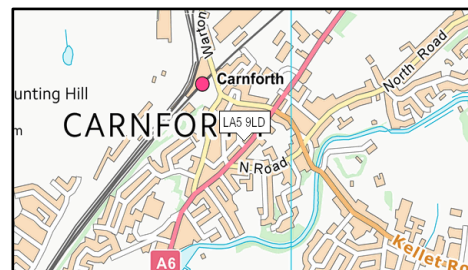


Geography

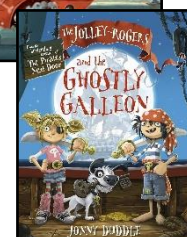
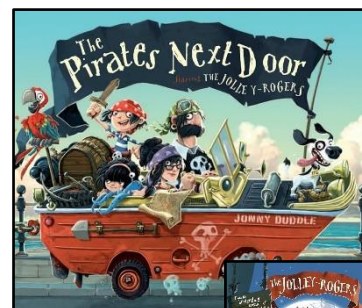
This half term Class 2 will learn about maps and will find out about human and physical geographical features in their local area. We will be walking to Carnforth and researching the 'street furniture' we find on the way. We will find out about different types of buildings and homes in towns and villages, and the types of jobs that people in these areas might do.



The children will be encouraged to ask and answer questions about their local area and learn about various types of land use in Carnforth. They will learn where Carnforth is on a map of the United Kingdom and how to get there. They will learn what facilities villages and towns need. The children will also

English

We will start the year off with a fun narrative set in a very ordinary sea-side town called "Dull-on-Sea", where one little girl goes on a less than dull adventure...with pirates! We will read 'The Pirates Next Door' and write letters in a bottle from a pirate adventure, before retelling and writing a new ending for the sequel 'The Pirates of Scurvy Sands'. After this, we will write instructions on how to get to Carnforth and finish the half term by writing letters home. We will accompany this unit by reading author Jonny Duddle's chapter book "The Ghostly Galleon" in story-time.



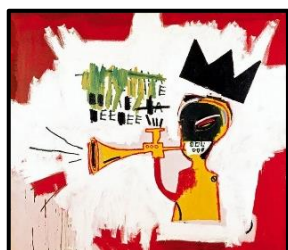
Art

In Art, we will be looking at the work of Swedish-American artist Claes Oldenburg. We will think about why people make sculptures and why towns commission artists to build sculptures and put them out in the community. We will think about what might represent Carnforth and make our own clay sculptures in the style of Claes Oldenburg's art.

Black History Week

October is Black History Month, so in the last week of this half term we will be having a whole-school week learning about and celebrating individuals and communities whose history has previously been incorrectly told or marginalised.

In KSI, we will learn about the artist Jean-Michel Basquiat.



P.E.

To begin with, PE will be on Wednesdays. PE kit is part of our school uniform and should be appropriate and in line with our uniform and kit policy. Some sessions will be outdoors and some indoors, so plain black trainers can be worn, or black pumps. As the weather gets cooler, tracksuit bottoms can be worn, but these should be plain black. Team-coloured hoodies may be worn. Earrings must be removed or covered at home on PE days. Children need to bring a bottle to school each day, with water only, please.