



# Year Four Knowledge Organiser

## Autumn Term 1



### Fantastic Beasts

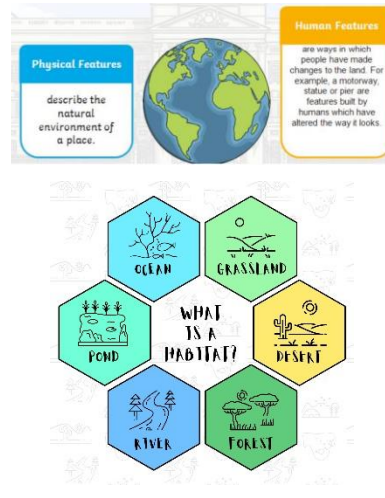
#### Prior Knowledge Vocabulary

compass points	any of the main points of a compass: north, south, east, west, north-east, north-west, south-east, south-west
grid reference	define a location on a map using coordinates
hemisphere	half of the Earth – the equator splits the Earth into its Northern and Southern hemispheres

#### Prior Knowledge – Key Facts

- How to locate countries on a map, atlas or globe.
- The village I live in is in the county of Cheshire which is in England. The continent is Europe.
- The seven continents and five oceans.
- How to use a key on a map.
- That different parts of the world have different climates.

### Pictures and diagrams



### Key Facts (curriculum end points)

- To be able to locate continents on maps, atlases, and globes and use key features on a map using 4-figure grid references.
- Describe geographical differences and similarities between countries.
- Explain how the climate of places is affected by their location e.g. close to the equator.
- Discuss geographical features of where gorillas originate.
- Discuss and discover why people and animals migrate to different countries

### Vocabulary

atlas	a book of maps
biodiversity	the variety of living things in a given place
cartographer	someone who draws and produces maps
climate	the general, typical weather conditions
ecosystem	a community of plants and animals that depend on each other to survive
habitat	the natural home or environment of an animal, plant or organism
classification	animals can be divided into groups or 'classified' by looking at the similarities and differences between them
human geography	features of land that have been impacted by humans (man-made)
physical geography	natural features of land