

Barnstondale 2026

Wednesday 20th - Friday 22nd May



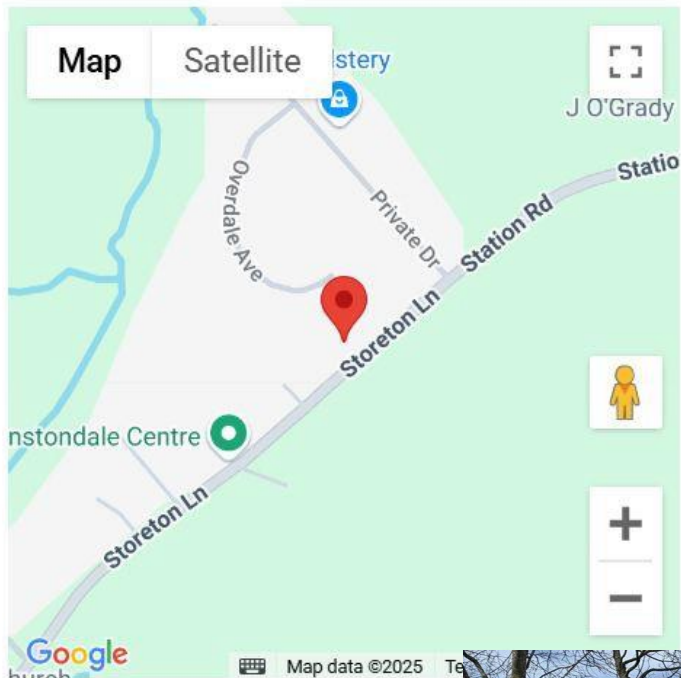
Mrs Wilkinson

Miss Smith

?

?

Location



Contact Details

Contact Name:

Enquiries

Address:

Barnstondale Centre, Storeton Lane, Barnston,
CH61 1BX

Telephone:

0151 648 1412

Email:

info@barnstondale.org





ADVENTURE THAT SPARKS SOMETHING MORE!

Welcome to Barnstondale

It's our mission to make what we do available to as many young people as possible!

34% of our visitors are disadvantaged, facing limited opportunities.

1 in 4 of our visitors have a disability



33% of visitors access our Bursary Scheme

CAN YOU HELP US SUPPORT MORE CHILDREN?
CHECK OUT OUR **EVENTS AND FUNDRAISING IDEAS** ON OUR WEBSITE AT

WWW.BARNSTONDALE.ORG






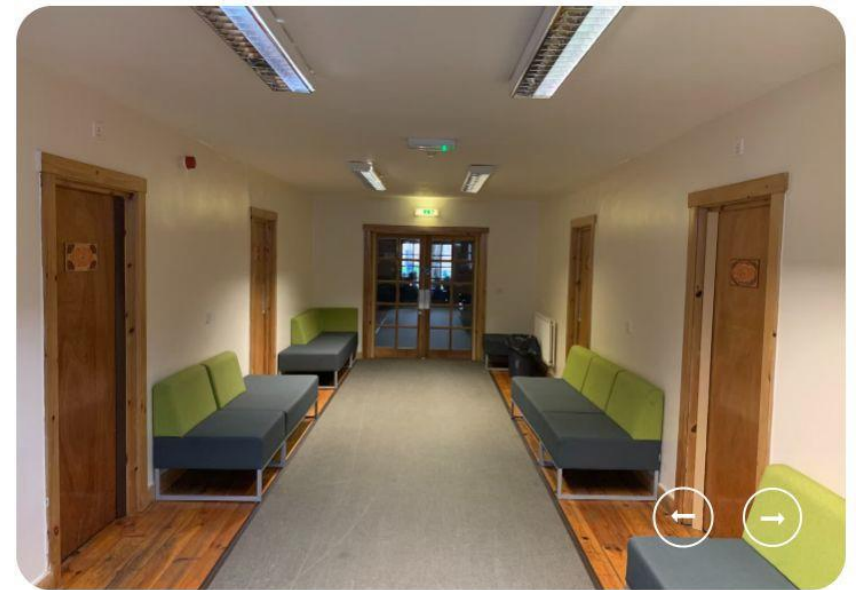
FUN CABINS EXTRAS

- | | | |
|------------------|-----------------|--------------------|
| 1 Sensory Garden | 9 Orchard | 16 Toilets |
| 2 Firepit | 10 Dale | 17 Conference Hall |
| 3 The Dale | 11 Meadow | 18 Canteen |
| 4 Target Range | 12 Pine | 19 Reception |
| 5 Sports Hall | 13 Winter Block | 20 Car Park |
| 6 MUGA | | |



TAG US IN YOUR
#BARNSTONDALEADVENTURE

@BARNSTONDALE   



Log Cabins

Our beautiful and comfortable cabins are the genuine article. Sourced directly from the USA, the land which made an art form of the log cabin, our accommodation will make your stay at Barnstondale memorable from the first moment you see them. After all, who hasn't dreamt of staying in a log cabin by the woods?

We have three log cabins – Pine (63 beds), Orchard (36 beds) and Dale (22 beds) – all of which have en suite facilities. Each cabin has an upstairs area (accessible by lift) for your exclusive use, which includes a large assembly/activity room, kitchenette and toilets. All cabins have wheelchair access and lifts to upper floors. Individual rooms accommodate between 2 and 7 people.

What to wear!

- *Children may get wet, muddy depending on the weather!*
- *Bring old clothing, not the latest fashion. Pack for wet, cold and warm!*
- *Children will be provided with ALL safety equipment*
- *There's no need to buy any specific/specialist equipment but the children will need sturdy trainers or walking shoes.*



Days

Refillable water bottle (No glass bottles please)

Back pack

Suncream

Sunhat / Cap (children must be able to apply it themselves) We WILL remind them.

Sensible Outdoor Clothing:

Tracksuit Bottoms

****Bin Bag for dirty clothes***

Hoodie

Socks

T shirts

Shorts

Sturdy trainers or walking shoes

Sliders / Crocs / Slippers - for indoor wear

Nightwear / Cuddly/ Book / Torch

Toiletries: soap, shampoo, toothbrush, toothpaste, flannel, hairbrush, bobbles (plus spares!) Deodorant (Stick or roll only)

Towels X2

Underwear (Plus spares)

What not to pack...

- Mobile phones
- No aerosols – deodorants, hairspray...
ROLL ON or 'STICKS' please. It can set off the smoke alarms.
- No Make-up!
- No electronic games/devices, jewellery, expensive or sentimental items
- No spending money
- No sweets or snacks - we will provide them
- *Food is not allowed in the bedrooms*



Groups

- *We will sort out the groups for the day time activities and the bedroom groups.*
- *We will take into account who friends are.*
- *Groups rotate around a 'carousel of activities' throughout the trip*





Medication

You will receive an invite to the 'event' On here are various tabs for you to fill in information. This includes a google 'medical' form.

Any medication should be clearly labelled with your child's name, & dosage. This includes Antihistamines, Calpol, creams.

Please hand them into the school office on the morning of the trip.

Making Contact

- *Emergency at home? – Ring school during the day and school will contact us.*
- *Out of school hours - contact the centre directly.*
- *Please ensure your contact details are correct and that you are available to answer the phone throughout our time at the centre (if you need to provide an alternative number, please let us know).*



Additional Information

Drop off & Pick up:

- *Wednesday: Children are dropped off at school normal time, in their own clothes and with their luggage and any meds. All luggage will be left in the hall.*
- *We spend a fun morning in school, school lunch is as normal, the coach picks us up at 12.15pm., arriving at the centre for 12.45pm.*
- *Friday: Parents pick up from the centre at 3pm*

Expectations

- *The children are provided with bedding to make their own beds.*
- *They take it in turns to set out our tables in the dining room, do their dishes and brush the floor after each meal.*