

A Warm Welcome from Mrs Bell

Many of our children are getting excited about the Reading Pledge as some of them have reached Number 10 on their class chart and have been able to choose a prize.

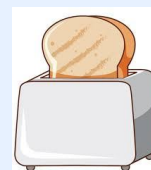
Remember, children can all move up three places a week for reading at home.

As well as earning rewards, they are developing their vocabulary, comprehension and love of reading—so everybody benefits from just a few minutes of reading several times a week.

Year 6 SATs

Our Year 6 children will be taking their SATs tests from Monday to Thursday next week.

We are inviting all Year 6 children to arrive from 8:15am each morning for a free breakfast, helping them to begin the day calmly and confidently. Children should enter via the school office.



A message to the Year 6 from Mrs Bell

Children in Year 6, we are incredibly proud of you. As you approach your SATs, please remember that these tests are simply an opportunity to show all that you have learnt.

Make sure you get plenty of rest this weekend and eat well. Believe in yourselves, stay calm and do your very best.

The hard work you have put in this year—and throughout your time at primary school—has not gone unnoticed. We are especially proud of the way you have supported one another and shown such resilience.

All children in school need to be on time next week

As the tests will take place in the school hall, it is essential that **all children** across school arrive on time next week.

Children arriving late will not be able to walk through the hall and will need to enter via the outside of the building.

We kindly ask for your support in ensuring your child arrives by 8.50am each morning, helping to create the best possible conditions for our Year 6 pupils.

Attendance Matters

Our overall school attendance for the week currently stands at **94.39%**. This is a dip from last week and below our target of 96%

Well done to the **5 classes** that met their attendance target this week. Let's work together to improve this further and ensure every child benefits from being in school every day.

Here is a breakdown of each class's attendance:

| | |
|----------------------|-------|
| Y6VH Huskies | 99.08 |
| Y6CH Hoopoes | 98.16 |
| Y4EP Penguins | 98.10 |
| Y4LN Narwhals | 96.67 |
| Y5NM Meerkat | 96.43 |
| Y3ZK Koalas | 95.24 |
| Y1LV Voles | 94.29 |
| RAH Ducklings | 93.51 |
| Y5CE Ermines | 93.30 |
| Y2US Seals | 92.12 |
| Y2JC Cranes | 91.43 |
| Y3RE Eagles | 91.33 |
| Y1IL Lions | 91.13 |
| RCK Chicks | 89.42 |

Punctuality: On Time is Key

Congratulations to **Rec Ducklings, Yr1L Lions, 3ZK Koalas, Y4 Penguins, and 6CH Hoopoes** for achieving perfect punctuality this week!

Unfortunately, we recorded 18 late arrivals across the school. A gentle reminder that children should arrive at school by **8:50 am** to ensure a smooth start to the day. Thank you for your cooperation.

Breakfast Club

Our Breakfast Club runs every morning from 8:00 am. For just £3 per child per session, your child can enjoy a breakfast snack and a drink.

Please ensure children are brought in by an adult and handed over to a staff member.

Adults should not use the staff car park for dropping children off at breakfast club.

School Nurse

The school nurse will be in school on Wednesday 3rd June from 8:50am to 10:00am.

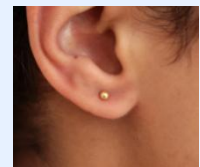
You can pre-book a 15-minute appointment by contacting the school office, or you are welcome to drop in and wait.

During these sessions, parents and carers can speak confidentially about a range of concerns, including diet, sleep, emotional wellbeing and general health.

Uniform Reminders

Please remember that if your child wears earrings for school, these should be limited to a small pair of studs.

Hoop or dangly earrings should not be worn.



Headscarves can be worn for school, but these should be blue, black or white. They should be not much longer than shoulder length and not contain any pins. These need to be removed for PE for safety reasons.



Cooking Club

Mrs Metcalfe has been telling me about the wonderful creations that take place in Cooking Club. This week, they made pizzas.



Reporting Absences



To report your child's absence, you can use School Spider, Studybugs, telephone us on 01282 693688, or email loa@reedley.lancs.sch.uk. Please provide a reason for the absence when reporting. In line with our Attendance Policy, we may carry out home visits to carry out welfare checks.

Year 4 Eid Assembly

Parents of children in Year 4 are invited to see our Eid Assembly on Monday 8th June at 2.30pm. Nearer the time, we will be asking families to send us a photo of their child or family celebrating Eid.

Important Dates for Your Diary

| | |
|--|---|
| Tuesday 19 th May | Y2 Crane Class Trip to Lytham St Anne's |
| Wednesday 20 th May | Y2 Seal Class Trip to Lytham St Anne's |
| Thursday 21 st May | Y4 Egyptian Day in school |
| Week beginning Monday 11 th May | Y6 SATS week |
| Friday 5 th June | Non-uniform day – please bring chocolate donations |
| Monday 8 th June | Y4 Eid assembly – Y4 parents welcome 2.30pm |
| Thursday 11 th June | Eid Fair 3.40pm to 4.40pm |
| Friday 12 th June | Sports Day 9.15 Year 1 and Year 2 10.30 Year 3 and Year 4 1.15 Year 5 and Year 6 2.30 Reception |
| Thursday 18 th and Friday 19 th June | Y4 trip to Offshoots |

Thank you for your continued support.

Mrs. Sarah Bell

Headteacher

