

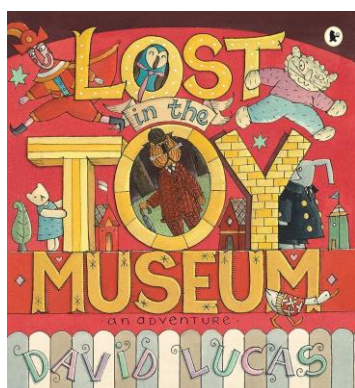


Dear Parents and Carers,

Welcome to Grasshoppers class.

I am really looking forward to teaching your child this year and getting to know them. Please look below at our exciting plans for this half term.

Our topic this term is *"What was life like for my family when they were my age?"* This links with several of the Global Goals including Good Health and Well-Being, Quality Education, Gender Equality and Reduced Inequalities.



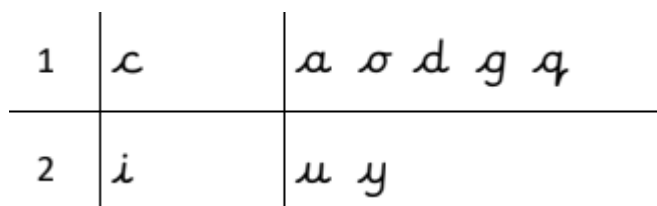
English

This half term we will be looking at the book 'Lost in the Toy Museum' by David Lucas. In this story, when the lights go out at the toy museum, everyone runs off and hides. Bunting, the sensible old toy cat, sets out to look for them in a fun adventure.

We will be focussing on using full stops and capital letters when writing simple sentences ensuring that spaces are left between words as well as using our phonics knowledge to spell with increasing accuracy.

This half term Year 1s will begin to learn cursive handwriting. You will notice that your child begins to form their letters differently from when they were in Reception. We understand that this can look a little strange at first but practice really does make perfect! We will be looking at these letters this half term.

Year 2s will recap these letters before moving on to learning how to join certain letter strings.



We will continue with the Read Write Inc. phonics scheme to extend reading, spelling of key words and learning new spelling patterns. More information about this will follow shortly.

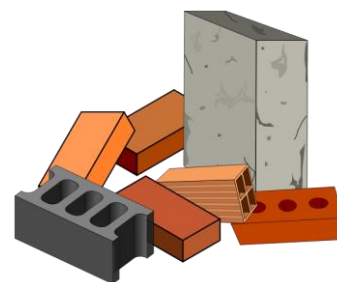


Maths

	Year 1	Year 2
Place Value within 10	<ul style="list-style-type: none">- Sort and count objects- Recognise numbers as words- 1 more and 1 less- Less than, greater than and equal to- The number line	<ul style="list-style-type: none">-Count objects to 100 and represent these numbers in numerals-To represent and compare numbers to 100 using a range of materials-To partition numbers in a variety of ways (eg. 58 is made up of 5 tens and 8 ones or 4 tens and 18 ones).-To count in steps of 2,3,5 and 10.
Addition and Subtraction	<ul style="list-style-type: none">-Part Whole Model-Number bonds within and to 10-Adding and subtracting in different ways (taking objects away, crossing out, on a number line)-Fact families (the link between addition and subtraction.	<ul style="list-style-type: none">-Add and subtract 10s-Recall number facts to 20 and use related facts to 100.-Add and subtract two 2-digit numbers

Science

We will be looking this term at the uses of everyday materials. We will be focussing on identifying and comparing the suitability of a variety of everyday materials, including wood, metal, plastic, glass, brick, rock and paper. In addition, we will be looking at seasonal changes throughout the term and describing weather associated with the seasons as well as how day length varies.



Computing

This half term we will be focussing on digital literacy and looking at what information technology (IT) is and begin to identify examples. We will look at where the children have seen IT in school and beyond including shops, hospitals and libraries. We will look at how IT improves our world and the importance of using IT responsibly.



Topic

We will be focussing on History this term and looking at changes within living memory by exploring toys from today and in the past. We will look at using sources to help ask and answer questions about the past. We will compare similarities and differences of the same toys over time and look at how they have changed. If you have any photographs of toys that other family members liked in the past, please email them in as this will really help with the children's understanding!



R.E. (taught by Mrs Molyneux)

We will be looking at Judaism this half term and exploring Jewish stories. We will be looking at what the Torah is and how this holy book has rules to help guide a Jew in their lives. We will be looking at why Shabbat is important to a Jew and also what a Synagogue is.

P.E.

P.E. will take place on Mondays this half term, taught by Multiflex. These sessions will be taught outdoors as much as possible so please ensure your child has black tracksuit bottoms and a long sleeve black jumper in school every week.

As we are going to be taking part in Forest School sessions on a Friday afternoon (starting Friday 15th September), this will take the place of our other P.E. lesson for this half term only. Children will need to come dressed appropriately for outdoor activities for these sessions.

Homework

Next Friday, your child will bring home their homework book to complete for the following Wednesday, homework will then be set weekly each Friday. We will also be setting additional assignments on Spelling Shed and Numbots - more details to follow in the coming weeks.

Your child will shortly be bringing home a new reading book along with their new reading diary. We encourage daily reading where possible, including looking at the red and green words in the books and we appreciate all the support you can give.

Polite Request

We are aware that some people have had a clearout over the summer and have unwanted books, magazines or comics. If you would like to donate any to Key Stage 1, we would be extremely grateful.

Ways to help your child in Year One

Reading and Writing





- Support your child to read their school reading book regularly and record in their reading record. Use the red and green words in the book to increase the reading fluency. Ask your child simple comprehension questions about what they have read using the questions at the back.
- Practise reading and spelling the Year 1 and 2 common exception words (see attached sheet).

Maths

- Practise counting forwards and backwards up to 20
- Practise 1 more or 1 less of numbers up to 10
- Practise number bonds to and within 10 and related subtraction facts.
For example: $2+1 = 3$ $1+2 = 3$ $6+4=10$ $4+6=10$ $10-6=4$ $10-4=6$

If you have any questions or concerns, please do not hesitate to contact me at grasshoppers@winchamcp.cheshire.sch.uk

Kind regards,
Mrs Blades

	<p>Giraffe letters reach up tall. (<i>ascenders</i>)</p> <p>b d h k l t</p>
	<p>Tortoise letters stay down low.</p> <p>a c e i m n o r s u v w x z</p>
	<p>Monkey letters all have tails. (<i>descenders</i>)</p> <p>g j p q y</p>
	<p>A monkey letter and a giraffe letter!</p> <p>j f</p>

Year 1 and 2 Common Exception Words

Year 1

the	they	one
a	be	once
do	he	ask
to	me	friend
today	she	school
of	we	put
said	no	push
says	go	pull
are	so	full
were	by	house
was	my	our
is	here	
his	there	
has	where	
I	love	
you	come	
your	some	

Year 2

door	gold	plant	clothes
floor	hold	path	busy
poor	told	bath	people
because	every	hour	water
find	great	move	again
kind	break	prove	half
mind	steak	improve	money
behind	pretty	sure	Mr
child	beautiful	sugar	Mrs
children	after	eye	parents
wild	fast	could	Christmas
climb	last	should	everybody
most	past	would	even
only	father	who	
both	class	whole	
old	grass	any	
cold	pass	many	