

Whilst you are waiting, scan the QR code and have a go at the Multiplication check...



Multiplication tables check: information for parents



Parents Meeting: 2nd March 2022 5:30pm



1. You have a child in year 4 at Lower Park Primary school

- Your child will be participating in the multiplication tables check in June.
- The purpose of the check is to determine whether your child can fluently recall their times tables up to 12, which is essential for future success in mathematics. It also helps to identify if your child may need additional support.

2. What is the multiplication tables check?

- It is an on-screen check consisting of 25 times table questions. Your child will be able to answer 3 practice questions before taking the actual check. They will then have 6 seconds to answer each question. On average, the check should take no longer than 5 minutes to complete.



3. Do I need to do anything to prepare my child for the check?

- No, you do not need to do anything additional to prepare your child for the check. As part of usual practice, we encourage you to practise times tables at home, through Times Table Rock Stars, songs or repetition.
- The TT Rockstars 'Sound check' game mimics the format of the actual test and regular practice on this game will prepare children for the test.
- We, as a school, will have unlimited access to a 'try it out' area from March. We will use this to make sure pupils have the necessary support required to access the check. This includes opportunities for our children to familiarise themselves with the check application and try out any access arrangements that may be required.

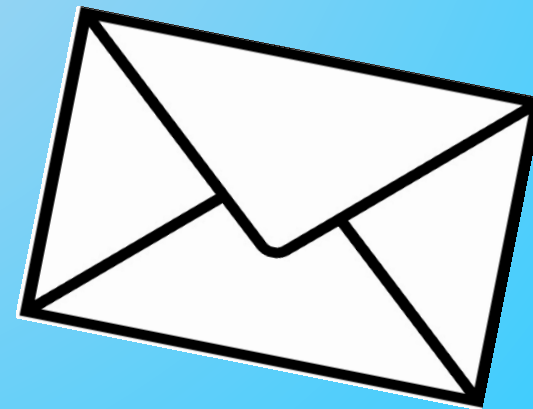


4. How will the results be used?

- We will have access to all our pupils' results, allowing those pupils who need additional support to be identified.

5. Will I receive feedback on my child's check?

- Yes. We will share your child's score with you, as we would with all national curriculum assessments. This will be included in your child's end of year report. There is no pass mark for the check.



6. What if my child cannot access the check?

- The check has been designed so that it is inclusive and accessible to as many children as possible, including those with special educational needs or disability (SEND) or English as an additional language (EAL).
- There are several access arrangements available for the check, these can be used to support pupils with specific needs. We will ensure that the access arrangements are appropriate for your child before they take the check in June.
- If it is not appropriate for your child to take part in the test, we will contact you individually.



7. Questions?



- We will now answer any questions about the multiplication tables check.
- For further details you can also visit www.gov.uk/STA.
- For DfE information for parents visit [here](#)