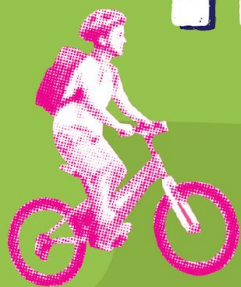


MAKE ^{THE}
SCHOOL RUN
SAFER
HEALTHIER
& HAPPIER



Our New
School Crossing
Patrol





School crossing patrols help children and adults cross the road safely on their way to and from school.



Stop
means
STOP!

School Crossing Patrol Signals



Figure A - Sign upside down
Not ready to cross pedestrians



Figure B - Sign sideways
Barrier to stop pedestrians



Figure C - Sign held up high
Ready to cross pedestrians -
vehicles must be prepared to stop




Figure D - Extended out
All vehicles must stop



CROSS WITH ME!

The lollipop person is there to help you cross safely!



**Think before you cross the road...
Always Stop, Look and Listen**

How to cross with the lollipop person

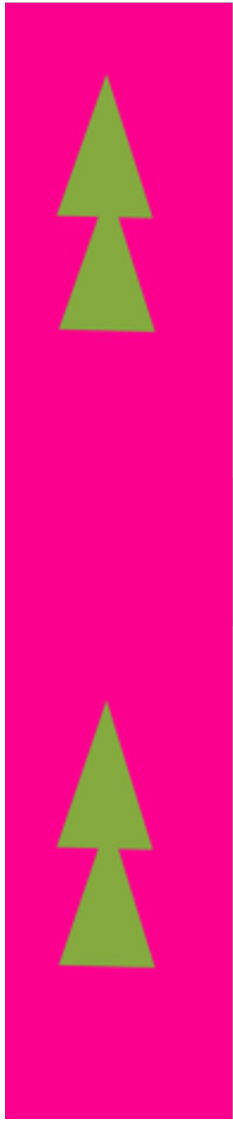


- Stop on the pavement away from the kerb.
- Wait while the lollipop person checks that it is safe and walks into the road.
- Do not cross until they tell you that it is safe to do so.
- Walk across the road in front of them so that they can see you at all times. Do not run.
- If you are on a bike or scooter, dismount or climb off it and push it across the road.

QUICK QUIZ

- 1 You are walking along the pavement towards the lollipop person. They are already crossing some children. Do you...
 - A) Run to cross with them ☐
 - B) Walk and wait until next time ☐
 - C) Shout to ask them to wait ☐
- 2 When you cross with a lollipop person should you...
 - A) Walk where they can see you ☐
 - B) Walk behind them ☐
 - C) Run in front of them ☐
- 3 When you have stopped and are ready to cross, should you...
 - A) Wait in the road ☐
 - B) Follow the lollipop person into the road ☐
 - C) Wait on the pavement until they call you ☐

ROOMNINE MEDIA



HELLO

